

ON A NEW SPECIES OF GENUS *EUBORELLIA* BURR (DERMAPTERA :
CARCINOPHORIDAE) FROM PHILIPPINES

G. K. SRIVASTAVA

Zoological Survey of India, Calcutta

ABSTRACT

A new species of Dermaptera, *Euborellia philippinensis* sp. n., from Laguna, Agriculture College compound, Philippines, is described. A key to the known species of *Euborellia* Burr from Philippines is also provided in the paper.

Recently, a small collection of Dermaptera from Philippines was sent to me for identification by Mr. Jesmandt Situmorang, University of the Philippine at Los Banos, College of Agriculture, Laguna. It contained a few examples of *Labidura riparia* (Pallas), *Nala lividipes* (Dufour) and *Euborellia stalli* (Dohrn). Besides, a new species is also represented which is being described here.

The genus *Euborellia*, is represented by four species, i. e., *E. stalli* (Dohrn) *E. annulipes* (Lucas) ; *E. plebeja* (Dohrn) and *E. femoralis* (Dohrn), in Philippines. The record of last specis from Philippines rests on a ♀ doubtfully referred by Borelli (1916) to this species.

A key to the known species from Philippines including the new species described.
(Based on males only)

- | | | |
|---|---|-----------------------------------|
| 1. Sides of abdominal segments
7 to 9 ecarinate | 2 | |
| —Sides of abdominal segment
7 to 9 carinate | 3 | |
| 2. Elytra and Wings well developed | | <i>E. plebeja</i> (Dohrn) |
| —Elytra abbreviated in the
from of narrow ovate flaps
one mesonotum | | <i>E. philippinensis</i>
sp n. |
| 3. Usually apterous : paramere
without a distinct inner apical
concavity | | <i>E. annulipes</i> (Lucas) |
| —Elytra and wings present or
former abbreviated and
latter wanting ; parameres
with a distinct inner apical
concavity | 4 | |
| 4. Elytra and wings well developed..... | | <i>E. femoralis</i> (Dohrn) |

—Elytra abbreviated in the
from of narrow ovate flaps
on mesonotum and wings
absent

E. stalli (Dohrn)

Euborellia philippinensis sp. n.

(Fig. 1E—H)

Material examined : Philippines, Laguna, Agriculture College Compound, Holotype ♂ (Regd. No. 7505/H5), 19. x. 1977, paratypes 2 ♂♂, 3 ♀♀, 19. x. 1977 ; m 1, 3 ♀♀, 20. i. 1978 (*J. Situmorang* Coll.) all deposited in the National Collections of the Zoological Survey of India except paratype 1 ♂, 3 ♀♀ in the Department of Entomology, College of Agriculture, Laguna, Philippines.

General colour dark brownish black or black, mouth parts, two basal as well as one or two ante-apical antennal segments yellowish brown ; legs clear yellow, in some females apical portion of femora close to knee joint with a faint brownish black spot dorsally.

♂ : Head triangular, smooth, pilose, sutures obliterated, about as long as broad or slightly longer, hind margin feebly emarginate in middle. Antennae 16-segmented, 1st segment slightly longer than the combined length of 2nd and 3rd ; 2nd small ; 3rd long and slender, almost equal to 6th ; 4th onwards segments becoming stouter and increasing in length. Pronotum slightly longer than broad, anterior and lateral margins straight, latter

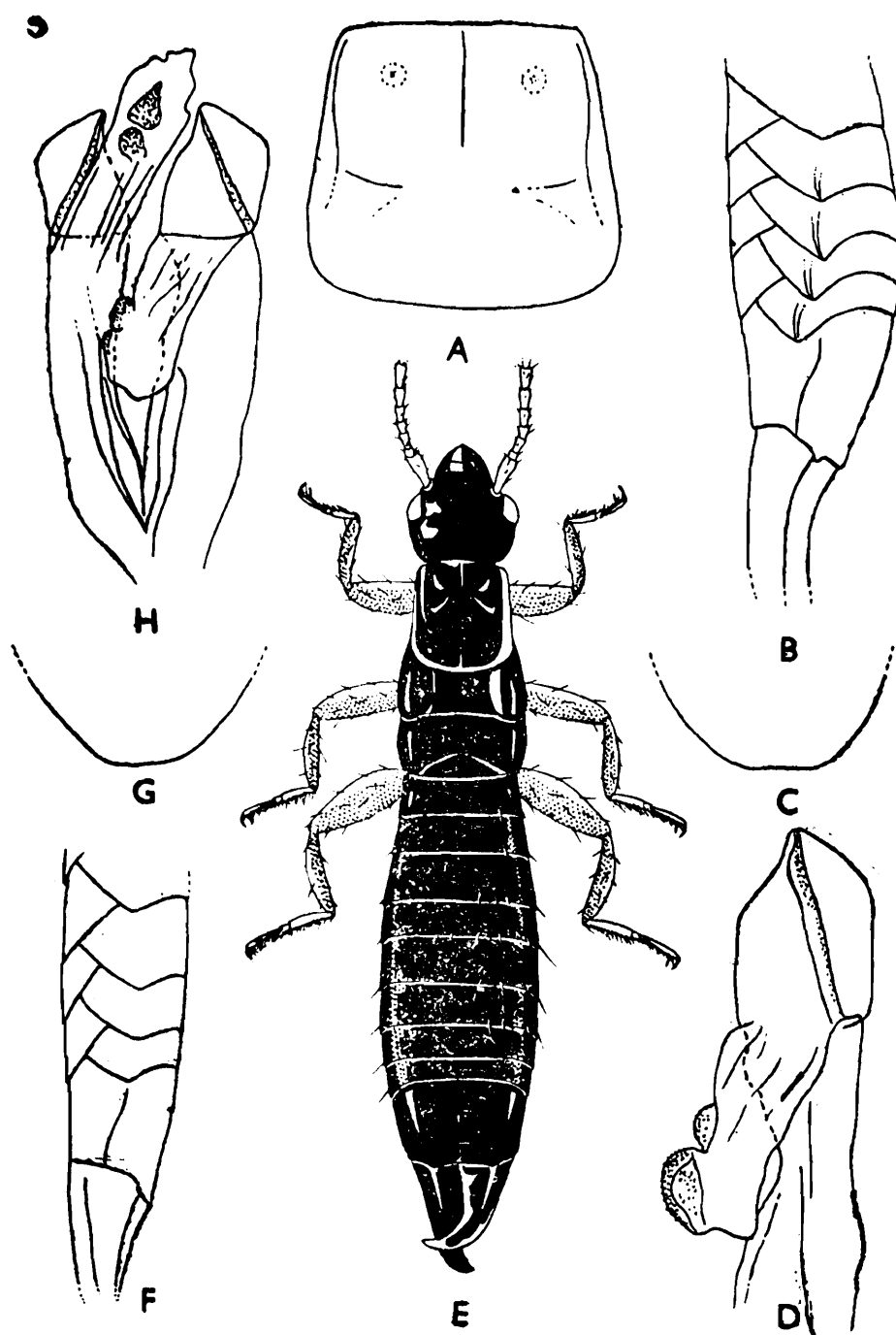


Fig. 1. (A-D) *Euborellia stali* (Dohrn) ♂ ; A—pronotum, B—Lateral view of abdomen, C—posterior margin of penultimate sternite, D—A portion of genitalia ; (E-H) *Euborellia philippinensis* sp. n., Holotype ♂ ; E—Dorsal view, F—Lateral view of abdomen, G—posterior margin of penultimate sternite, H—Genitalia.

gently reflexed, slightly widened posteriorly with angles and margin broadly rounded, median sulcus faintly marked, prozona weakly raised and metazona less so. Elytra present as narrow ovate flaps on mesonotum with

hind margin convex or truncate in some specimens only. Legs typical of the genus. Abdomen long and slender, weakly convex, smooth, lateral tubercles poorly developed, gently enlarged in middle, sides of segments,

6th to 9th obtuse, smooth or sometimes with faint striations but always ecarinate. Penultimate sternite posteriorly with hind margin obtusely rounded, manubrium about two and half times longer than the sternite and dilated at apex. Forceps with branches contiguous or subcontiguous, tapering apically, right branch almost straight, only slightly curved a little before apex whereas right branch strongly curved at about middle and crosses over the left a little before apex, trigonal above in basal one third, afterwards somewhat depressed, inner margin serrated. Genitalia with parameres about as broad as long, external apical angle distinct.

♀ : Agrees with males in most characters except that the sides of abdominal segments rounded, penultimate sternite comparatively more narrowed posteriorly and forceps simple and straight.

Measurements (in mm.)

	Holotype		Paratype
	♂	♂♂	♀♀
Length of body	8.6	9.0—10.0	10.1—13.4
Length of forceps	1.3	1.25—1.3	1.0—1.6

(In case of ♀♀ body segments are greatly distended due to preservation in spirit therefore it is not possible to give accurate measurements).

REMARKS

This species comes very close to *Euborellia stali* (Dohrn) but differs in having hind margin and angles of the pronotum broadly rounded ; sides of abdominal segments somewhat obtuse and ecarinate and parameres with external apical angle sharp.

In *E. stali* (Dohrn), from various localities, from Ceylon, India and Philippines, it has been found that the hind margin of pronotum is subtruncate ; sides of 7th and 9th abdominal segments are carinate and the external apical angle of parameres is broadly rounded (Fig. 1A-D).

ACKNOWLEDGEMENTS

I am thankful to the Director, Zoological Survey of India, Calcutta for providing necessary facilities. My thanks are also due to Mr. J. Situmorang, Department of Entomology, University of Philippines at Los Banos, College of Agriculture, Laguna, Philippines for placing this interesting collection at my disposal.

REFERENCES

BORRELLI, A. 1916. Dermatteri delle Isole Filippine. Nota III. *Boll. Musei. Zool. Anat. Comp. R. Univ. Torino*, 31 (715) : 1-6.

