

A NEW FLY NIGRITOMYIA ANDAMANENSIS (DIPTERA : STRATIOMYIDAE)  
FROM THE ANDAMANS

B. C. DAS

*Zoological Survey of India, Calcutta*

AND

R. M. SHARMA AND M. DEVROY

*Zoological Survey of India, Port Blair*

ABSTRACT

A new fly *Nigritomyia andamanensis* sp. nov. is described here.

INTRODUCTION

These flies were collected recently from the Andamans during a collection trip. After a careful examination it was found to be a new species.

*Nigritomyia andamanensis* sp. nov.

(Figs. 1. A, B, C)

♂ ♀. Black ; males larger than females ; head usually as large as thorax, with short whitish pubescence ; eyes confluent in

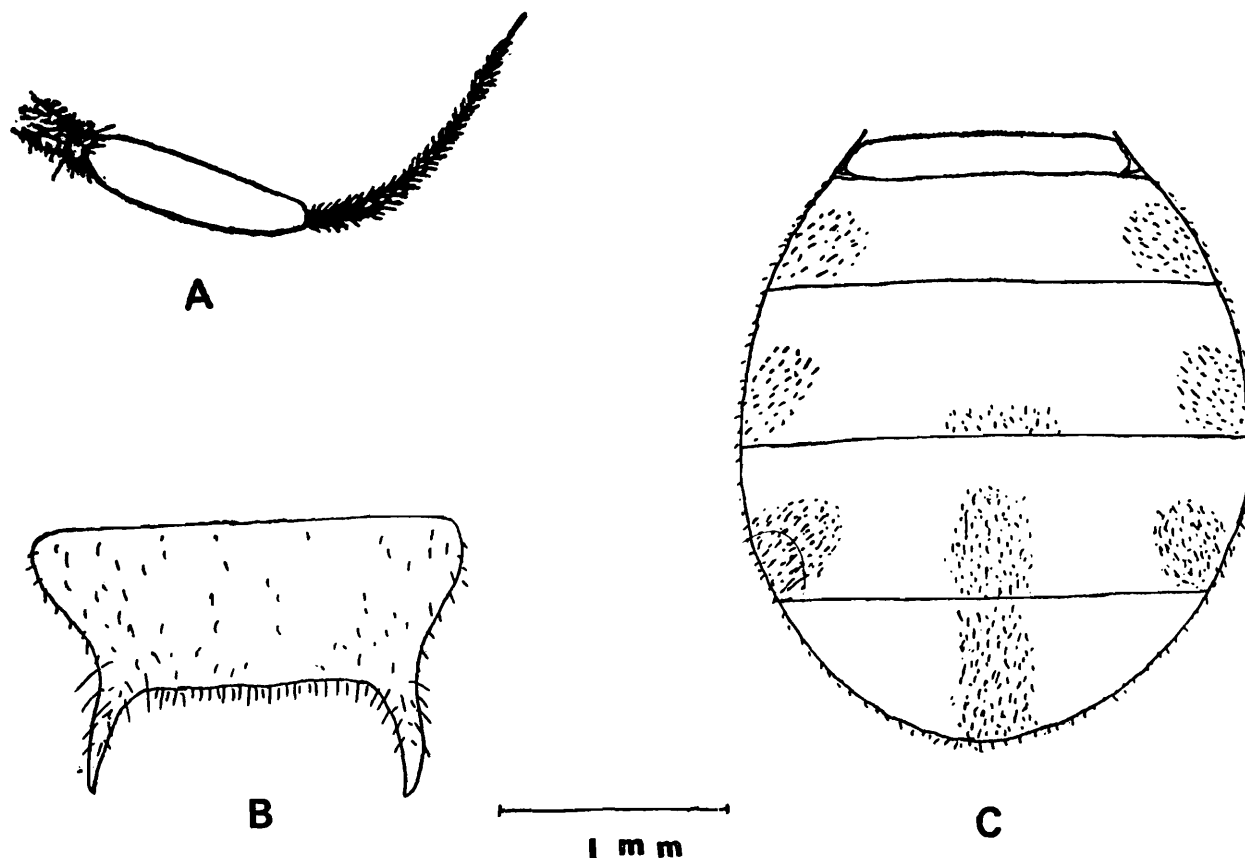


Fig. 1. *Nigritomyia andamanensis* sp. nov. A. Antenna, B. Scutellum with spines, C. Abdomen.

male but separate in female; facets equal, posterior orbit with narrow silvery-white pubescence in females but in male it is not so prominent; ocular setae proclinate; palpi black. Antenna black, 3-jointed, 3rd joint annulated, arista apical, pubescent, arista shorter in females but longer in males.

Thorax black, shining, covered with short white pubescence, forming two median longitudinal white lines, the sides black with white pubescence, dorsal hairs on thorax short and sparse, in males these are longer than in females, side spines black, strong and long, present at the base of the wing dorsally, scutellum black with short black hairs and white pubescence, two broadly separated strong long black spines on hind margin bearing minute hairs, these spines are longer in males than in females.

Abdomen black, shining with white pubescence, forming a spot on 4th and 5th segment laterally and a dorsomedian line on last two segments. Legs black, with minute whitish pubescence, coxae black, trochanter pale yellow; femur yellowish at base, tibia pale yellow at base, tarsi pale yellow at base gradually being darker towards apex. Wing

subhyaline, stigma dark brown, wing tip is more darker in females than in males; halter's stem and club white.

*Material*: *Holotype* 1 ♂, Sippighat, S. Andaman, 16.x.1982, Coll. R. M. Sharma; *Allotype* 3 ♀♀, Sippighat, S. Andaman, 20.xi.81; 25.i.82, Coll. R. M. Sharma; *Paratype* 1 ♂, Sippighat, S. Andaman, 21.iii.81, Coll. R. M. Sharma.

Z. S. I. Regd. No. 6843/H6-6847/H6

*Remarks*: This species comes close to *Nigritomyia maculipennis* Macq., but differs as follows: Palpi with whitish pubescence; trochanter yellowish; thorax with two parallel whitish lines; shape of the abdomen roundish; arista densely hairy.

#### ACKNOWLEDGEMENT

The authors are thankful to Dr. B. K. Tikader, Director, Zoological Survey of India, Calcutta for encouragement and facilities given to work.

#### REFERENCES

- BRUNETTI, E. 1923. The Fauna of British India. II: 47-48.