

Conservation Area Series - 21

FAUNAL DIVERSITY OF
**SAIPUNG WILDLIFE SANCTUARY/
NARPUH RESERVE FOREST**
JAINTIA HILLS, MEGHALAYA



Zoological Survey of India

Conservation Area Series 21

Faunal Diversity of
**SAIPUNG WILD LIFE SANCTUARY/
NARPUH RESERVE FOREST
JAINTIA HILLS (MEGHALAYA)**

**S.J.S. HATTER
NIBEDITA SEN
ROSAMMA MATHEW
AND
SUMITA SHARMA**

Eastern Regional Station, Zoological Survey of India, Shillong

Edited by the Director, Zoological Survey of India, Kolkata.



**Zoological Survey of India
Kolkata**

CITATION

Hatter, S.J.S., Sen, Nibedita, Mathew, Rosamma and Sharma, Sumita. 2004. Faunal Diversity of Saipung Wild Life Sanctuary/Narpuh Reserve Forest, Jaintia Hills, Meghalaya, *Conservation Area Series 21* : 1-66. (Published by the Director, *Zool. Surv. India*, Kolkata)

Published : October, 2004

ISBN 81-8171-051-7

© Govt. of India, 2004

ALL RIGHTS RESERVED

- No part of this publication may be reproduced stored in a retrieval system or transmitted in any form or by any means, electronic, mechanical, photocopying, recording or otherwise without the prior permission of the publisher.
- This book is sold subject to the condition that it shall not, by way of trade, be lent, resold hired out or otherwise disposed of without the publisher's consent, in an form of binding or cover other than that in which, it is published.
- The correct price of this publication is the price printed on this page. Any revised price indicated by a rubber stamp or by a sticker or by any other means is incorrect and should be unacceptable.

PRICE

Indian Rs. 300.00

Foreign \$ 20 £ 15

Published at the Publication Division, by the Director, Zoological Survey of India, 234/4 A.J.C. Bose Road, 2nd MSO Building, Nizam Palace (13th floor), Kolkata - 700 020 and printed at Shiva Offset Press, 14 Old Connaught Place, Dehra Dun - 248001

***FAUNAL DIVERSITY OF
SAIPUNG WILD LIFE SANCTUARY/
NARPUH RESERVE FOREST
JAINTIA HILLS (MEGHALAYA)
Conservation Area Series***

No. 21

2004

Pages 1 - 66

CONTENTS

INTRODUCTION	1
SYSTEM ACCOUNTS	2
Phylum MOLLUSCA	
Family VIVIPARIDAE	
1. <i>Bellamya bengalensis f. annandalei</i> (Kobelt)	2
Family CYCLOPHORIDAR	
2. <i>Cyclophorus (Cyclophorus) affinis</i> Theobald	2
3. <i>Cyclophorus himalayanus</i> (Pfeiffer)	3
Family PILIDAE	
4. <i>Pila theobaldi</i> (Hanley)	3
Family THIARIDAE	
5. <i>Thiara (Tareboa) lineata</i> (Gray)	3
6. <i>Brotra (Antimelania) costula</i> (Refinesque)	4
7. <i>Paludomus (Paludomus) conica</i> (Gray)	4
8. <i>Paludomus (Paludomus) regulata</i> Benson	5
9. <i>Paludomus (Paludomus) stephanus</i> (Benson)	5
Family PLANORBIDAE	
10. <i>Indoplanorbis exustus</i> (Deshayes)	5
Family SUBULINIDAE	
11. <i>Glessula tenuispira</i> (Benson)	6
Class BIVALVIA	
Family CORILLIDAE	
12. <i>Plectopylis plectostoma</i> (Benson)	6

Family CORBICULIDAE	
13. <i>Corbicula striatella</i> Deshayes	6
Phylum ANNELIDA	
Family HAEMALIPSIDAE	
14. <i>Haemadipsa sylvestris</i> R. Blanchard	7
Phylum ARTHROPODA	
Family SIDIDAE	
15. <i>Pseudosida bidentata</i> Herrick, 1884	7
Family DAPHNIIDAE	
16. <i>Scapholeberis kingi</i> Sars, 1903	7
Family MOINIDAE	
17. <i>Moinodaphnia macleayi</i> (King, 1853)	7
Family BOSMINIDAE	
18. <i>Bosmina longirostris</i> (O.F. Muller, 1776)	8
Family MACROTHRICIDAE	
19. <i>Macrothrix spinosa</i> King, 1853	8
20. <i>Macrothrix triserialis</i> Brady, 1886	8
21. <i>Macrothrix laticornis</i> (Jurine, 1820)	8
Family CHYDORIDAE	
22. <i>Chydorus sphaericus</i> (O.F.Muller, 1776)	9
23. <i>Alona rectangula</i> Sars, 1862	9
Class INSECTA	
Order ODONATA	
Family COENAGRIONIDAE	
24. <i>Enallagma parvum</i> Selys	10
Family PLATYCNEMIDIDAE	
25. <i>Coeliceia bimaculata</i> Laidlaw	10
Family CHLOROCYPHIDAE	
26. <i>Rhinocypha quadrimaculata</i> Selys	10
27. <i>Rhinocypha spuria</i> Selys	10
Family GOMPHIDAE	
28. <i>Ictinogomphus rapax</i> (Rambur)	11
Family LIBELLULIDAE	
29. <i>Orthetrum pruinosum neglectum</i> (Rambur)	11

30. <i>Orthetrum sabina sabina</i> (Drury)	11
31. <i>Crocothemis servilia</i> (Drury)	12
32. <i>Diplacodes trivialis</i> (Rambur)	12
33. <i>Neurothemis fulvia</i> (Drury)	12
34. <i>Trithemis aurora</i> (Burmeister)	13
35. <i>Tholymis tillarga</i> Fabricius	13
36. <i>Urothemis signata signata</i> (Rambur)	13
Order HEMIPTERA	
Family NEPIDAE	
37. <i>Leccotrephes robustus</i> Stal	13
38. <i>Laccotrephes ruber</i> (Linnaeus)	14
Family VELIIDAE	
39. <i>Microvelia lineatipes</i> Paiva	14
Order COLEOPTERA	
Family DYTISCIDAE	
40. <i>Cybister posticus</i> Aube	14
41. <i>Hydaticus fabricii</i> Macleay	14
Family CHRYSOMELIDAE	
42. <i>Craspedonta leayana</i> (Latreille)	15
Order HYMENOPTERA	
Family FORMICIDAE	
43. <i>Gnamptogenys bicolor</i> (Emery)	15
44. <i>Leptogenys processionalis</i> (Jerdon)	15
45. <i>Odontoponera transversa</i> (F. Smith)	16
46. <i>Pachycondyla leeuwenhoekii</i> (Forel)	16
47. <i>Tetraponera nigra</i> (Jerdon)	16
48. <i>Lophomyrmex bedoti</i> Emery	16
49. <i>Monomorium floricola</i> (Jerdon)	17
50. <i>Monomorium pharaonis</i> (Linnaeus)	17
51. <i>Pheidole sagei</i> Forel	17
52. <i>Dolichoderus thoracicus</i> (Smith)	17
53. <i>Anoplolepis gracilipes</i> (Smith)	18
54. <i>Monomorium pharaonis</i> (Linnaeus)	18
55. <i>Oecophylla smargdina</i> (Fabricius)	18
56. <i>Paratrechina longicornis</i> (Latreille)	18
57. <i>Polyrachis furcata</i> Smith, F.	18

Phylum	CHORDATA	
Class	PISCES	
Family	CYPRINIDAE	
58.	<i>Salmostoma bacaila</i> (Hamilton-Buchanan)	19
59.	<i>Salmostoma phulo phulo</i> (Hamilton-Buchanan)	19
60.	<i>Barilius barila</i> (Hamilton-Buchanan)	20
61.	<i>Barilius barna</i> (Hamilton-Buchanan)	20
62.	<i>Barilius bendelisis</i> (Hamilton-Buchanan)	20
63.	<i>Barilius tileo</i> (Hamilton-Buchanan)	21
64.	<i>Esomus danricus</i> (Hamilton-Buchanan)	21
65.	<i>Danio aequipinnatus</i> (McClelland)	22
66.	<i>Danio dangila</i> (Hamilton-Buchanan)	22
67.	<i>Danio devario</i> (Hamilton-Buchanan)	23
68.	<i>Brachydanio rerio</i> (Hamilton-Buchanan)	23
69.	<i>Rasbora daniconius</i> (Hamilton-Buchanan)	23
70.	<i>Amblypharyngodon mola</i> (Hamilton-Buchanan)	24
71.	<i>Tor putitora</i> (Hamilton-Buchanan)	24
72.	<i>Naziritor chelynoides</i> McClelland	24
73.	<i>Neolissocheilus hexagonolepis</i> (McClelland)	25
74.	<i>Oreochthys cosuatis</i> (Hamilton-Buchanan)	25
75.	<i>Puntius chola</i> (Hamilton-Buchanan)	25
76.	<i>Puntius conchoniis</i> (Hamilton-Buchanan)	26
77.	<i>Puntius gelius</i> (Hamilton-Buchanan)	26
78.	<i>Puntius sarana sarana</i> (Hamilton-Buchanan)	27
79.	<i>Puntius shalynius</i> Yazdani & Taluldar	27
80.	<i>Puntius sophore</i> (Hamilton-Buchanan)	27
81.	<i>Puntius terio</i> (Hamilton-Buchanan)	28
82.	<i>Puntius ticto</i> (Hamilton-Buchanan)	28
83.	<i>Labeo boga</i> (Hamilton-Buchanan)	28
84.	<i>Labeo calbasu</i> (Hamilton-Buchanan)	29
85.	<i>Labeo pangusia</i> (Hamilton-Buchanan)	29
86.	<i>Labeo rohita</i> (Hamilton-Buchanan)	29
87.	<i>Crossocheilus latius latius</i> (Hamilton-Buchanan)	30
88.	<i>Garra annandalei</i> Hora	30
89.	<i>Garra nasuta</i> (McClelland)	30
	Family PSILORHYNCHIDAE	
90.	<i>Psilorhynchoides homaloptera</i> (Hora and Mukherjee)	31

Family BALITORIDAE	
91. <i>Acanthocobitis botia</i> (Hamilton-Buchanan)	31
92. <i>Schistura beavani</i> Gunther	32
93. <i>Schistura savona</i> (Hamilton-Buchanan)	32
94. <i>Schistura sikmaiensis</i> (Hora)	32
Family COBITIDAE	
95. <i>Botia dario</i> (Hamilton-Buchanan)	33
96. <i>Somileptes gongota</i> (Hamilton-Buchanan)	33
97. <i>Lepidocephalus berdmorei</i> (Blyth)	33
98. <i>Lepidocephalus guntea</i> (Hamilton-Buchanan)	34
99. <i>Lepidocephalus menoni</i> (Pillai & Yazdani)	35
Family BAGRIDAE	
100. <i>Batasio batasio</i> (Hamilton-Buchanan)	35
101. <i>Chandramara chandramara</i> (Hamilton-Buchanan)	35
102. <i>Mystus bleekeri</i> (Day)	36
103. <i>Mystus vittatus</i> (Bloch)	36
Family AMBLYCIPITIDAE	
104. <i>Amblyceps mangois</i> (Hamilton-Buchanan)	37
Family SISORIDAE	
105. <i>Gagata cenia</i> (Hamilton-Buchanan)	37
106. <i>Gagata sexualis</i> Tilak	38
107. <i>Laguvia shawi</i> Hora	38
Family HETEROPNEUSTIDAE	
108. <i>Heteropneustes fossilis</i> (Bloch)	38
Family CHACIDAE	
109. <i>Chaca chaca</i> (Hamilton-Buchanan)	39
Family OLYRIDAE	
110. <i>Olyra longicaudata</i> McClelland	39
Family BELONIDAE	
111. <i>Xenentodon cancila</i> (Hamilton-Buchanan)	39
Family APLOCHEILIDAE	
112. <i>Aplocheilus panchax</i> (Hamilton-Buchanan)	40
Family SYNBRANCHIDAE	
113. <i>Monopterus cuchia</i> (Hamilton-Buchanan)	40

Family MASTACEMBELIDAE	
114. <i>Macrognathus aral</i> (Bloch and Schneider)	41
115. <i>Macrognathus pancalus</i> (Hamilton-Buchanan)	41
116. <i>Mastacembelus armatus</i> (Lacepede)	41
Family CHAUDHURIDAE	
117. <i>Chaudhria (Pillaia) indica</i> (Yazdani)	42
Family CHANDIDAE	
118. <i>Chanda nama</i> (Hamilton-Buchanan)	42
119. <i>Parambassis baculis</i> (Hamilton-Buchanan)	42
120. <i>Parambassis ranga</i> (Hamilton-Buchanan)	43
Family NANDIDAE	
121. <i>Badis badis</i> (Hamilton-Buchanan)	43
122. <i>Nandus nandus</i> (Hamilton-Buchanan)	44
Family CICHLIDAE	
123. <i>Oreochromis mossambica</i> (Peters)	45
Family GOBIIDAE	
124. <i>Glossogobius giuris giuris</i> (Hamilton-Buchanan)	45
Family ANBANTIDAE	
125. <i>Anabas testudineus</i> (Bloch)	45
Family BELONTIIDAE	
126. <i>Colisa fasciatus</i> (Schneider)	46
127. <i>Colisa sota</i> (Hamilton-Buchanan)	46
Family CHANNIDAE	
128. <i>Channa orientalis</i> Schneider	47
129. <i>Channa punctatus</i> (Bloch)	47
130. <i>Channa stewartii</i> (Playfair)	48
Family TETRADONTIDAE	
131. <i>Tetraodon cutcutia</i> (Hamilton-Buchanan)	48
Class AMPHIBIA	
Family BUFONIDAE	
132. <i>Bufo melanostictus</i> Schneider	49
133. <i>Bufoides meghalayananus</i> (Yazdani and Chanda)	49
Family MICROHYLIDAE	
134. <i>Kaloula pulchra</i> (Gray)	49

135. <i>Microhyla berdmorei</i> (Blyth)	50
Family RHACOPHORIDAE	
136. <i>Polypedates leucomystax</i> (Gravenhorst)	50
Family RANIDAE	
137. <i>Amolops afghanus</i> (Gunther)	50
138. <i>Amolops gerbillus</i> (Annandale)	50
139. <i>Euphlyctis cyanophlyctis</i> (Schneider)	51
140. <i>Euphlyctis hexadactylus</i> (Lesson)	52
141. <i>Hoplobatrachus tigerinus</i> (Daudin)	52
142. <i>Limnonectes laticeps</i> (Boulenger)	53
143. <i>Fejervarya limnocharis</i> (Gravenhorst)	53
144. <i>Occidozyga borealis</i> (Annandale)	54
145. <i>Rana erythraea</i> (Schlegel)	54
146. <i>Rana taipehensis</i> van Denburgh	54
Class REPTILIA	
Family AGAMIDAE	
147. <i>Calotes emma</i> Gray	55
148. <i>Calotes versicolor</i> (Daudin)	55
149. <i>Japalura planidorsata</i> Jerdon	56
150. <i>Ptyctolaemus gularis</i> Peters	56
Family GEKKONIDAE	
151. <i>Cosymbotus platyurus</i> (Schneider)	56
Family SCINCIDAE	
152. <i>Mabuya macularius</i> (Blyth)	56
153. <i>Mabuya multifasciata multifasciata</i> Kuhl	57
Family VARANIDAE	
154. <i>Varanus bengalensis</i> (Daudin)	57
Family BOIDAE	
155. <i>Python molurus</i> (Linnaeus)	57
Family COLUBRIDAE	
156. <i>Amphiesma xenura</i> (Wall)	57
157. <i>Dendrelaphis pictus</i> (Gmelin)	58
158. <i>Dendrelaphis tristis</i> (Daudin)	58
159. <i>Elaphe radiata</i> (Schlegel)	58
160. <i>Oligodon dorsalis</i> (Gray & Harwicke)	58

161. <i>Rhabdophis himalayanus</i> (Gunther)	59
162. <i>Sibynophis collaris</i> Gray	59
Class AVES	
Family PSITTACIDAE	
163. <i>Psittacula alexandri fasciata</i> (P.L.S.Muller)	59
Family ALCEDINIDAE	
164. <i>Alcedo atthis bengalensis</i> Gmelin	59
Family BMUCEROTIDAE	
165. <i>Anthracoseros malabaricus malabaricus</i> (Gmelin)	59
166. <i>Buceros bicornis homrai</i> Hodgson	59
Family MEROPIDAE	60
167. <i>Nyctyornis athertoni athertoni</i> (Jardine & Selby)	60
Family CORVIDAE	
168. <i>Dendrocitta formosae himalayana</i> Jerdon	60
Family CAMPEPHAGIDAE	
169. <i>Pericrocotus flammeus fraterculus</i> Swinhoe	60
Family IRENIDAE	
170. <i>Aegithina tiphia tiphia</i> (Linnaeus)	60
171. <i>Chloropsis aurifrons aurifrons</i> (Temminck)	60
172. <i>Irena puella puella</i> (Latham)	60
Family STURNIDAE	
173. <i>Gracula religiosa intermedia</i> A. Hay	60
Family PYCNONOTIDAE	
174. <i>Pycnonotus melanicterus flaviventris</i> (Tickell)	60
175. <i>Pycnonotus cafer bengalensis</i> Blyth	60
176. <i>Criniger flaveolus flaveolus</i> (Gould)	60
Family MUSCICAPIDAE	60
177. <i>Macronous gularis rubricapilla</i> (Tickell)	60
178. <i>Heterophasia gracilis</i> (McClelland)	60
179. <i>Copsychus saularis erimelas</i> (Oberholser)	60
180. <i>Enicurus immaculatus</i> (Hodgson)	60
181. <i>Saxicola torquata przewalskii</i> (Pleske)	60
182. <i>Monticola solitarius pandoo</i> (Sykes)	60

Family	NECTARINIIDAE	
183.	<i>Arachnothera longirostris longirostris</i> (Latham)	60
Family	CAPITONIDAE	
184.	<i>Megalaima lineata hodgsoni</i> Bonaparte	60
Family	PICIDAE	
185.	<i>Chrysocolaptes lucidus sultaneus</i> (Hodgson)	61
Family	PHASIANIDAE	
186.	<i>Gallus gallus murghi</i> Robinson & Kloss	61
187.	<i>Lophura leucomelana lathami</i> (J.E. Gray)	61
Class	MAMMALIA	
Family	TALPIDAE	
188.	<i>Talpa leucura</i> Blyth - Eastern Mole.	61
Family	SORICIDAE	
189.	<i>Suncus murinus griffithi</i> (Horsfield)	61
190.	<i>Suncus etruscus nudipes</i> (Blyth)	61
191.	<i>Crocidura attenuata rubricosa</i> (Anderson)	61
192.	<i>Anourosorex squamipes</i> (Milne Edwards)	61
Family	PTEROPODIDAE	
193.	<i>Rousettus leschenaulti leschenaulti</i> (Desmarest)	61
194.	<i>Cynopterus sphinx sphinx</i> (Vahl.)	61
195.	<i>Eonycteris spelaea spelaea</i> (Dobson)	61
196.	<i>Macroglossus sobrinus sobrinus</i> Anderson	61
Family	RHINOLOPHIDAE	61
197.	<i>Rhinolophus affinis himalayanus</i> Anderson	61
198.	<i>Rhinolophus lepidus lepidus</i> Blyth	61
199.	<i>Rhinolophus luctus perniger</i> Hodgson	61
200.	<i>Rhinolophus pearsoni</i> Horsfield	61
201.	<i>Hipposideros armiger armiger</i> (Hodgson)	61
Family	VESPERTILIONIDAE	
202.	<i>Myotis siligorensis siligorensis</i> (Horsfield)	61
203.	<i>Myotis horsfieldii</i> (Temminck)	61
204.	<i>Pipistrellus coromandra coromandra</i> (Gray)	62
205.	<i>Barbastella leucomelas darjelingensis</i> (Hodgson)	62
206.	<i>Scotomanes ornatus ornatus</i> (Blyth)	62
207.	<i>Murina tubinaris</i> (Scully)	62

208. <i>Murina cyclotis cyclotis</i> Dobson	62
209. <i>Kerivoula hardwickei depressa</i> Miller	62
Family CERCOPITHECIDAE	
210. <i>Presbytis pileatus pileatus</i> Blyth	62
Family CANIDAE	62
211. <i>Canis aureus</i> Linnaeus	62
Family URSIDAE	62
213. <i>Melursus ursinus</i> (Shaw)	62
214. <i>Selenarctos thibetanus</i> (G.Cuvier)	62
Family MUSTELIDAE	62
215. <i>Arctonyx collaris collaris</i> F. Cuvier	62
216. <i>Lutra lutra monticola</i> Hodgson	62
217. <i>Aonyx cinerea concolor</i> (Rafinesque)	62
Family VIVERRIDAE	
218. <i>Viverra zibetha zibetha</i> Linnaeus	62
Family HERPESTIDAE	
219. <i>Herpestes auropunctatus</i> (Hodgson)	62
Family FELIDAE	
220. <i>Felis bengalensis bengalensis</i> Kerr	62
221. <i>Felis chaus</i> Gulden staedt	62
222. <i>Panthera tigris tigris</i> (Linnaeus)	62
223. <i>Neofelis nebulosa</i> (Griffith)	
Family ELEPHANTIDAE	
224. <i>Elephas maximus indicus</i> G. Cuvier	62
Family CERVIDAE	
225. <i>Muntiacus muntjak vaginalis</i> (Boddaert)	63
226. <i>Cervus unicolor equines</i> G. Cuvier	63
Family BOVIDAE	
227. <i>Bos gaurus</i> H. Smith	63
228. <i>Capricornis sumatraensis</i> (Bechstein)	63
Family SCIURIDAE	
229. <i>Hyolpetes alboniger alboniger</i> (Hodgson)	63
230. <i>Callosciurus erythraeus erythraeus</i> (Pallas)	63

231. <i>Callosciurus erythraeus erythrogaster</i> (Blyth)	63
232. <i>Callosciurus pygerythrus blythi</i> (Tytler).....	63
233. <i>Dremomys lokriah macmillani</i> Thomas	63
234. <i>Funambulus pennanti</i> Wroughton.....	63
Family RHIZOMYIDAE	
235. <i>Cannomys badius badius</i> (Hodgson)	63
Family MURIDAE	
236. <i>Chiropodomys gliroides gliroides</i> (Blyth).....	63
237. <i>Vandeleuria oleracea dumeticola</i> (Hodgson).....	63
238. <i>Rattus rattus brunneusculus</i> (Hodgson).....	63
239. <i>Rattus rattus tistae</i> Hinton	63
240. <i>Rattus nitidus nitidus</i> (Hodgson)	63
241. <i>Rattus sabanus garonum</i> Thomas	63
242. <i>Niviventer fulvescens fulvescens</i> (Gray)	63
243. <i>Mus musculus castaneus</i> Water house	63
244. <i>Mus musculus homourus</i> Hodgson	63
245. <i>Mus cervicolor nagarum</i> (Thomas)	63
246. <i>Mus booduga booduga</i> (Gray).....	63
247. <i>Mus pahari jacksoniae</i> (Thomas)	63
248. <i>Bandicota bengalensis bengalensis</i> (Gray)	63
249. <i>Bandicota indica nemorivaga</i> (Hodgson)	63
DISCUSSION	64
ACKNOWLEDGEMENT	65
REFERENCES	65

INTRODUCTION

The Saipung Wildlife Sanctuary (proposed) and Narpuh Reserve forest are located in the District of Jaintia Hills, Meghalaya which lies in the eastern part of the State of Meghalaya between 25°2'N and 26°6'N latitude and 89°50'E and 92°50'E longitude. The District is bounded on the North and East by the State of Assam, on the West by the East Khasi Hills District and South by the International boundary with Bangladesh. It comprises an area of 3819 sq. kms, which is about 17.03% of the total area of the State.

In Jaintia Hills there are three reserve forests ; 1. Saipung Reserve Forest (15035.308 hec.), 2. Narpuh Reserve Forest, Block-I (6241.880 hec.), and 3. Narpuh Reserve Forest, Block-II (9867.870 hec.)

The forest types of the District comprises of Sub-Tropical Pine Forest, Tropical Semi-evergreen, Tropical Moist/Dry deciduous, Tropical dry and Bamboo mixed. Out of the total forest cover within the District *i.e.* 1436.11 sq. kms the reserve forest constitutes only 31,145.058 hectares or 311.45 sq. kms, and the rest falls under the District Council or private communities. These forest areas (both the reserve forest and the private forest) are habitat for varieties of wildlife.

The Jaintia Hills are very rich in biodiversity. The vegetation adjoining the East Khasi Hills is dominated by *Pinus kesiya* and its associates. The vegetation on the North, East and South is dominated by broad leaved species. The forest of the District is also very rich in Orchids. Out of the six rare orchids/plants as listed in the Schedule VI of Wildlife (Protection) Act, 1972, three are found in the forests of the District *viz.* Pitcher Plant (*Nepenthes khasiana*), Ladies Slipper (*Paphiopedilium sp.*) and Blue Vanda (*Vanda eoerulea*).

The fauna consists of Elephants, Tigers which migrate to the adjoining forests of Assam occasionally. Besides these, animals like Clouded Leopard, Bear, Jungle Cat, Civet Cat, Flying Squirrel, Sambhar, Barking Deer, Gaur, Serow are also present. The primates comprise of Monkeys; and Reptiles like Giant Monitor Lizards are also common in the forests.

Many other species of animals are also found in the forests of the District such as Leopard Cat, Clouded Leopard, Hoolock Gibbon, Tiger, Python, Indian Pied Hornbill, Great Indian Hornbill, Peacock Pheasants etc.

Various types of birds both rare and common are also found in the forests of the District *viz.* Hill Mynas, Chloropsis, Barbets, Wood Peckers, Bulbuls, Lesser Hornbills, King Fishers, Jungle Fowls, Kaleej Pheasants, Peacock Pheasants, and many others.

Saipung is the biggest forest reserve of the State situated in the Eastern part of the District of Jaintia Hills about 81 kms. away from the District Headquarter, Jowai.

However there is constant danger of denudation, deforestation and encroachment of these forest area due to population explosion and requirement of more land for cultivation purposes. Over and above, exploitation of coal, other mining practices and Jhum cultivation in the District is posing a major threat for the denudation of forests leading to depletion of forest cover and the habitat for wildlife.

The present report is based mainly on surveys conducted by Eastern Regional Station, Zoological Survey of India, Shillong. In all, seven surveys were conducted during 1998-2003. Collections from earlier surveys from these areas have also been incorporated to get the overall faunal picture. The list of birds and mammals as recorded in the Fauna of Meghalaya (Part-I, Vertebrata) is also incorporated.

References have been cited for original description only. The species names with(*) denotes collection from old surveys and (+) denotes report for the first time from Jaintia Hills.

SYSTEMATIC ACCOUNT

Phylum	MOLLUSCA
Class	GASTROPODA
Order	MESOGASTROPODA
Family	VIVIPARIDAE

1. *Bellamyia bengalensis f. annandalei* (Kobelt)

1908. *Vivipara annandalei* Kobelt, *Nachr. Malak. Ges.* 60 : 161.

Collection locality : 1 ex. Regd. No. IV/MOL/ERS/207, Narpuh Reserve Forest, BL-II, (Nakhian stream), 14.09.1998.

Distribution within N.E. India : Meghalaya (East and West Garo hills, East and West Khasi hills, Jaintia hills).

Elsewhere : INDIA : Tamil Nadu, West Bengal.

Family	CYCLOPHORIDAE
--------	---------------

2. *Cyclophorus (Cyclophorus) affinis* Theobald

1857. *Cyclophorus affinis* Theobald, *J. Asiat. Soc. Beng.* 26 : 246.

Collection locality : 1 ex., Regd. No. IV/MOL/ERS/238, Narpuh Reserve Forest, BL-II, (Umkiang and around), 13.09.1998.

Distribution within N.E. India : Meghalaya (Garo hills, Jaintia hills, Ri-Bhoi).

Elsewhere : MYANMAR; PEGU

3. *Cyclophorus himalayanus* (Pfeiffer)

1851. *Cyclostoma himalayanus* Pfeiffer, *Proc. Zool. Soc. Lond.* p. 42.

Collection locality : 2 exs., Regd. No. IV/MOL/ERS/239, Narpuh Reserve Forest, BL-II, (Sonapur area), 13.09.1998.

Distribution within N.E. India : Meghalaya (East and West Khasi hills, Jaintia hills). Assam.

Elsewhere : INDIA : West Bengal; BHUTAN.

Family PILIDAE

4. *Pila theobaldi* (Hanley)

1875. *Ampullaria theobaldi* Hanley, *Proc. Zool. Soc. Lond.* p. 608.

Collection localities : 8 exs., Regd. No. IV/MOL/ERS/236, Narpuh Reserve Forest, BL-II (Umkiang stream), 14.05.1999; 2exs., Regd. No. IV/MOL/ERS/237, Narpuh Reserve Forest BL-II (Umkiang and around), 14.09.1998; 1ex., Regd. No. IV/MOL/ERS/243, Narpuh Reserve Forest, BL-II (Umkiang stream & around), 15.05.1999.

Distribution within N.E. India : Meghalaya, (East, West and South Garo hills, Jaintia hills, Ri-Bhoi).

Elsewhere : MYANMAR.

Family THIRIDAE

5. *Thiara (Tareboa) lineata* (Gray)

1828. *Helix lineata* Gray, in *Wood's Index Test Suppl.* p. 24 fig. 68.

Collection localities: 4 exs., Regd.No. IV/MOL/ERS/208, Narpuh Reserve Forest, BL-II, (Lubha river), 13.05.1999; 4 exs., Regd. No. IV/MOL/ERS/209, Narpuh Reserve Forest BL-II (Umkiang), 13.05.1999.

Distribution within N.E. India : Meghalaya (West Khasi hills, Jaintia hills), Assam.

Elsewhere : INDIA : Bihar, West Bengal, Madhya Pradesh; BHUTAN; MYANMAR; SRI LANKA.

6. *Brotra (Antimelania) costula* (Rafinesque)

1833. *Melania costula* Rafinesque, *Atlantic J.* 5 : 166.

Collection localities : 105 exs., Regd. No. IV/MOL/ERS/210, Narpuh Reserve Forest, BL-II (Lubha river), 13.05.1999; 27 exs., Regd. No. IV/MOL/ERS/211, 10 km. Ahead of Saipung Wildlife Sanctuary, 09.09.1998; 20 exs., Regd. No. IV/MOL/ERS/212, Saipung (Diastom village), 21.02.1999; 6 exs., Regd. No. IV/MOL/ERS/213, Narpuh Reserve Forest, BL-II, (Umkiang & around), 14.09.1998; 17 exs., Regd. No. IV/MOL/ERS/214, Narpuh Reserve Forest, BL-II (Umkiang stream), 16.05.1999; 1 ex., Regd. No. IV/MOL/ERS/217, Narpuh Reserve Forest, BL-II (Umkiang and around), 13.09.1998; 15 exs., Regd. No. IV/MOL/ERS/218, Narpuh Reserve Forest, BL-II (2 kms. ahead of Umkiang on way to Ratachera), 12.09.1998; 2 exs., Regd. No. IV/MOL/ERS/219, Narpuh Reserve Forest, BL-II (Umkiang stream), 14.05.1999; 10 exs., Regd. No. IV/MOL/ERS/220, Narpuh Reserve Forest, BL-II (Ratachera), 15.05.1999; 2 exs., Regd. No. IV/MOL/ERS/222, Narpuh Reserve Forest, BL-II (Malidhar river), 12.09.1998; 1 ex., Regd. No. IV/MOL/ERS/223, Narpuh Reserve Forest, BL-II (Ratachera), 15.05.1999.

Distribution within N.E. India : Meghalaya, (East, West and South Garo hills, West Khasi hills, Jaintia hills, Ri-Bhoi); Assam, Manipur.

Elsewhere : INDIA : West Bengal; INDONESIA; MYANMAR.

7. *Paludomus (Paludomus) conica* (Gray)

1934. *Melania conica* Gray, *Giffith Cuvier. Moll.* p. 1. 14 fig. 5.

Collection localities : 36 exs., Regd. No. IV/MOL/ERS/224, Narpuh Reserve Forest, BL-II (Lubha river), 13.05.1999; 193 exs., Regd. No. IV/MOL/ERS/225, Narpuh Reserve Forest, BL-II (Umkiang stream), 15.05.1999; 35 exs., Regd. No. IV/MOL/ERS/227, Narpuh Reserve Forest, BL-II (Dona river), 15.05.1999; 1 ex., Regd. No. IV/MOL/ERS/228, Saipung (Kopili river), 20.12.1999; 51 exs., Regd. No. IV/MOL/ERS/229, Narpuh Reserve Forest, BL-II (Umkiang and around), 13.09.1998; 52 exs., Regd. No. IV/MOL/ERS/230, Narpuh Reserve Forest, BL-II (Ratachera), 15.05.1999; 3 exs., Regd. No. IV/MOL/ERS/231, Narpuh Reserve Forest, BL-II (Ratachera), 15.05.1999; 1 ex., Regd. No. IV/MOL/ERS/232, Narpuh Reserve Forest, BL-II (Umkiang and around), 14.09.1998; 6 exs., Regd. No. IV/MOL/ERS/244, Narpuh Reserve Forest, BL-II (Umkiang stream), 14.05.1999; 16 exs., Regd. No. IV/MOL/ERS/248, Saipung Wildlife Sanctuary (10 kms. ahead of Saipung), 09.09.1998; 28 exs., Regd. No. IV/MOL/ERS/249, Narpuh Reserve Forest, BL-II (Wakhian stream), 14.09.1998.

Distribution within N.E. India : Meghalaya (East, West and South Garo hills, West Khasi hills, Jaintia hills, Ri-Bhoi); Assam.

Elsewhere : BANGLADESH; BHUTAN.

8. *Paludomus (Paludomus) regulata* Benson

1856. *Paludomus regulata* Benson, *Ann. Mag. Nat. Hist.* (2) 17 : 496.

Collection locality : 3 exs., Regd. No. IV/MOL/ERS/245, Narpuh Reserve Forest, BL-II (Ratachera), 15.05.1999.

Distribution within N.E. India : Meghalaya (South Garo hills, East Khasi hills).

Elsewhere : INDIA : West Bengal : MYANMAR.

9. *Paludomus (Paludomus) stephanus* (Benson)

1836. *Melania stephanus* Benson, *J. Asiat. Soc. Beng.* 36 : 747.

Collection locality : 3 exs., Regd. No. IV/MOL/ERS/234, Saipung (Diastom village), 21.02.1999.

Distribution within N.E. India : Meghalaya (East and West Khasi hills, Jaintia hills).

Elsewhere : BANGLADESH.

Order BASOMMATOPHORA

Family PLANORBIDAE

10. *Indoplanorbis exustus* (Deshayes)

1834. *Planorbis exustus* Deshayes, in *Belanger, Voy. Indes, Orientales* p. 417, pl. 1. figs. 11-13.

Collection locality : 16 exs., Regd. No. IV/MOL/ERS/235, Narpuh Reserve Forest, BL-II (Umkiang and around), 14.09.1998.

Distribution within N.E. India : Meghalaya (East and West Garo hills, Jaintia hills).

Elsewhere : MYANMAR; INDO-CHINA; JAVA; THAILAND.

Order STYLOMMATOPHORA

Family SUBULINIDAE

11. *Glessula tenuispira* (Benson)

1836. *Achatina tenuispira* Benson, *J. Asiat. Soc. Beng.* 5 : 353.

Collection locality : 1 ex., Regd. No. IV/MOL/ERS/241, Narpuh Reserve Forest, BL-II (Wakhian stream), 14.09.1998.

Distribution within N.E. India : Meghalaya (South Garo hills, Jaintia hills); Arunachal Pradesh..

Elsewhere : INDIA : West Bengal; BANGLADESH; MYANMAR.

Family CORILLIDAE

12. *Plectopylis plectostoma* (Benson)

1836. *Helix plectostoma* Benson, *J. Asiat. Soc. Beng.* 5 : 351.

Collection locality : 1 ex., Regd. No. IV/MOL/ERS/242, Narpuh Reserve Forest, BL-II (Wakhian stream), 14.09.1998.

Distribution within N.E. India : Meghalaya (West Garo hills, East & West Khasi hills, Jaintia hills). Mizoram, Nagaland, Sikkim,

Elsewhere : INDIA : West Bengal; BANGLADESH; MYANMAR.

Class BIVALVIA

Order VENEROIDA

Family CORBICULIDAE

13. *Corbicula striatella* Deshayes

1854. *Corbicula striatella* Deshayes, *Proc. Zool. Soc. Lond.* 22 : 344.

Collection locality : 4 exs., Regd. No. IV/MOL/ERS/240, Saipung (Diastom village river), 21.02.1999.

Distribution within N.E. India : Meghalaya (Jaintia hills).

Elsewhere : BANGLADESH; MYANMAR; PAKISTAN.

Phylum ANNELIDA

Class HIRMUDINEA

Order ARHYNCHOBDELLAE

Family HAEMALIPSIDAE

1. *Haemadipsa sylvestris* R. Blanchard

1894. *Haemadipsa sylvestris* Blanchard, *Ann. Mus Civico .di Maturelle.* Genova, 2(14) 114 pp. 114-115. (Carin-Mts. Burma, 1000 m).

Collection locality : 1 ex., (Unnamed Regd. no. 36688), Umkiang stream and around, Narpuh Reserve Forest, BL-II, Jaintia hills, Meghalaya, 14.05.1999.

Distribution within N.E. India : Meghalaya (Jaintia hills).

Elsewhere : MYANMAR..

Phylum	ARTHROPODA
Class	CRUSTACEA
Sub-Class	BRANCHIOPODA
Order	CLADOCERA
Family	SIDIDAE

1. *Pseudosida bidentata* Herrick, 1884

1884. *Pseudosida bidentata* Herrick, p. 20 pl. K. fig. 9.

Collection locality : 1 slide, Regd. No. IV/CLA/ERS/100, Narpuh Reserve Forest, BL-II, Umkiang area, 03.10.2002.

Distribution within N.E. India : Meghalaya (Jaintia hills), represents a new record from this state.

Elsewhere : Many parts of Tropics and near Tropics.

Family	DAPHNIIDAE
--------	------------

2. *Scapholeberis kingi* Sars, 1903

1903. *Scapholeberis kingi* Sars, pp. 8-10, pl. 1, fig : 2. 2a-c.

Collection locality : 2 slides, Regd. No. IV/CLA/ERS/102 Narpuh Reserve Forest, BL-I, Passadwar, 06.03.2003.

Distribution within N.E. India : Meghalaya; Manipur; Tripura.

Elsewhere : INDIA : Widely distributed, reported from West Bengal; Bihar; Kashmir; Karnataka; Tamil Nadu; AFRICA; AUSTRALIA; NORTH AMERICA; GERMANY; SOUTH ASIA.

Family	MOINIDAE
--------	----------

3. *Moinodaphnia macleayi* (King, 1853)

1853. *Moina macleayi* King, pp. 251-252, pl. 5.

Collection locality : 5 slides, Regd. No. IV/CLA/ERS/88, Narpuh Reserve Forest, Umkiang area, 03.10.2002.

Distribution within N.E. India : Meghalaya (West Khasi Hills, Jaintia Hills); Assam; Manipur.

Elsewhere : Widely distributed in Tropics.

Family BOSMINIDAE

4. *Bosmina longirostris* (O.F. Muller, 1776)

1776. *Lynceus longirostris* O.F. Muller, p. 76, tab. 10. fig. 7-8.

Collection locality : 2 slides, Regd. No. IV/CLA/ERS/105. Narpuh Reserve Forest-I, Rympleagi, Passadwar 6.3.2003.

Distribution within N.E. India : Meghalaya (All Districts); Assam; Manipur; Mizoram; Nagaland.

Elsewhere : Cosmopolitan.

Family MACROTHRICIDAE

5. *Macrothrix spinosa* King, 1853

1853. *Macrothrix spinosa* King, p. 256, pl. VI, F. (not Daday, 1901).

Collection locality : 6 slides, Regd. No. IV/CLA/ERS/46, Narpuh Reserve Forest, Wakhian Stream, 14.09.1998.

Distribution within N.E. India : Meghalaya (Jaintia Hills); Assam, Manipur.

Elsewhere : INDIA : Rajasthan.

6. *Macrothri triserialis* Brady, 1886

1886. *Macrothrix triserialis* Brady, p. 295, pl. 37, fig. 16-20.

Collection locality : 6 slides, Regd. No. IV/CLA/ERS/45, Narpuh Reserve Forest, Wakhian Stream, 14.09.1998.

Distribution within N.E. India : Meghalaya (All Districts); Assam: Manipur: Mizoram; Tripura.

Elsewhere : INDIA : West Bengal, Bihar, Rajasthan, Kerala, Little Andaman.

7. *Macrothrix laticornis* (Jurine, 1820)

1820. *Macrothrix laticornis* Jurine, p. 151.

Collection locality : 1 slide, Regd. No. IV/CLA/ERS/90, Narpuh Reserve Forest, Umkiang & around, Wakhian Stream, 14.09.1998.

Distribution within N.E. India : Meghalaya (All Districts) represents a new report from N.E. India.

Elsewhere : INDIA : Ladakh; West Bengal; Tamil Nadu; Kerala; Holarctic; Neotropical and Oriental Regions.

Family CHYDORIDAE
Sub-Family CHYDORINAE

8. *Chydorus sphaericus* (O.F. Muller, 1776)

1776. *Lynceus sphaericus* O.F. Muller, p. 119.

Collection locality : 1 slide, Regd. No. IV/CLA/ERS/75, Narpuh Reserve Forest; Umkiang & around, Wahkian Stream. 14.09.1998; 2 slides, Regd. No. IV/CLA/ERS/82, Narpuh Reserve Forest; Umkiang & around, Wahkian Stream; 14.09.1998; 2 slides, Regd. No. IV/CLA/ERS/104, Narpuh Reserve Forest-I; Rymplang, Passadwar.

Distribution within N.E. India : Meghalaya (All Districts).

Elsewhere : INDIA : West Bengal; Kashmir; Ladakh; Uttar Pradesh; Nilgiri Hills : South India; Cosmopolitan.

Sub-Family ALONINAE

9. *Alona rectangula* Sars, 1862.

1862. *Alona rectangula* Sars, p. 160.

Collection locality : 3 slides, Regd. No. IV/CLA/ERS/79, 10 kms ahead of Saipung Wildlife Sanctuary.

Distribution within N.E. India : Meghalaya (East Khasi Hills, Jaintia Hills, East Garo Hills, South Garo Hills); Assam, Manipur.

Elsewhere : INDIA : West Bengal; Kashmir; Ladakh; Gujrat; Rajasthan; Apparently Cosmopolitan.

Class	INSECTA
Order	ODONATA
Sub-Order	ZYGOPTERA
Super-Family	COENAGRIONOIDEA
Family	COENAGRIONIDAE

1. *Enallagma parvum* Selys

1876. *Enallagma parvum* Selys, *Bull. Acad. Belg.* (2) 41 : 537.

Collection locality : 1 ex., I/OD/ERS/179, Narpuh Reserve Forest, BL-II (Umkiang), 11.09.1998.

Distribution within N.E. India : Meghalaya (Garo hills, East and West Khasi hills, Jaintia hills); Manipur.

Elsewhere : INDIA : Kerala, Punjab, Uttar Pradesh, West Bengal.

Family	PLATYCNEMIDIDAE
--------	-----------------

2. *Coeliceia bimaculata* Laidlaw

1914. *Coeliceia bimaculata* Laidlaw, *Rec. Indian Mus.* 8 : 341.

Collection localities : 1 ex., I/OD/ERS/157, Narpuh Reserve Forest, BL-II (Sonapur), 13.9.1998; 1 ex., I/OD/ERS/166, Saipung Wildlife Sanctuary, 09.09.1998.

Distribution within N.E. India : Meghalaya (West Garo hills, Jaintia hills).

Elsewhere : INDIA : Meghalaya (West Garo hills, Jaintia hills).

Family	CHLOROCYPHIDAE
--------	----------------

3. *Rhinocypha quadrimaculata* Selys

1853. *Rhinocypha quadrimaculata* Selys, *Syn. Cal.* : 60.

Collection locality : 2 exs., I/OD/ERS/185, Saipung Wildlife Sanctuary, 09.09.1998.

Distribution within N.E. India : Meghalaya (Khasi hills, West Garo hills, Jaintia hills); Assam.

Elsewhere : INDIA : Himachal Pradesh, Kashmir, West Bengal, NEPAL; BHUTAN.

4. *Rhinocypha spuria* Selys

1879. *Rhinocypha spuria* Selys, *Bull. Acad. Belg.* (2) 47 : 388.

Collection locality : 1 ex., I/OD/ERS/169, Saipung Wildlife Sanctuary, 09.09.1998.

Distribution within N.E. India : Meghalaya (Khasi hills, Jaintia hills); Nagaland.

Elsewhere : INDIA : Uttar Pradesh, West Bengal, MYANMAR.

Sub-Order	ANISOPTERA
Super-Family	CORDULEGASTEROIDEA
Family	GOMPHIDAE
Sub-Family	ICTINOGOMPHINAE

5. *Ictinogomphus rapax* (Rambur)

1842. *Ictinogomphus rapax* Rambur, *Ins. Nevrap* : 169.

Collection locality : 1 ex., I/OD/ERS/178, Narpuh Reserve Forest, BL-II (Umkiang), 14.09.1998.

Distribution within N.E. India : Meghalaya (East Garo hills, Jaintia hills).

Elsewhere : INDIA : West Bengal, MYANMAR; MALAYSIA; SRI LANKA.

Family	LIBELLULIDAE
--------	--------------

6. *Orthetrum pruinosum neglectum* (Rambur)

1842. *Libellula neglecta* Rambur, *Hist. nat. Ins. Nevrop.*, : 86.

Collection localities : 1 ex., I/OD/ERS/158, Narpuh Reserve Forest, BL-II (Ratachera), 15.05.1999; 1 ex., I/OD/ERS/159, Narpuh Reserve Forest, BL-II(Umkiang), 11.09.1998; 1 ex., I/OD/ERS/160, Narpuh Reserve Forest, BL-II (Ratachera), 12.09.1999; 1 ex., I/OD/ERS/177, Narpuh Reserve Forest, BL-II (Umkiang), 13.09.1998.

Distribution within N.E. India : Meghalaya (East Khasi hills, Garo hills, Jaintia hills), Mizoram.

Elsewhere : INDIA : West Bengal; NEPAL; CHINA; MYANMAR; INDONESIA.

7. *Orthetrum sabina sabina* (Drury)

1770. *Libellula sabina* Drury. 111 *Exot. Ins.*, 1 : 114.

Collection localities : 1 ex., I/OD/ERS/1415, Saipung Reserve Forest, 21.12.1999; 1ex., I/OD/ERS/152, Saipung Reserve Forest, 21.12.1999; 2 exs., Umphong river, Saipung, Jaintia hills, 18.12.1999; 3 exs., I/OD/ERS/154, Kopili river, Saipung, Jaintia hills, 20.12.1999; 1 ex., I/OD/ERS/161, Narpuh Reserve Forest, BL-II (Ratachera), 12.09.1999; 1 ex., I/OD/

ERS/162, Narpuh Reserve Forest, BL-II (Umkiang), 14.09.1998; 1 exs., I/OD/ERS/163, Narpuh Reserve Forest, BL-II (Umkiang), 11.09.1998; 1 ex., I/OD/ERS/170, Narpuh Reserve Forest, BL-II (Ratachera), 12.09.1998; 1 ex., I/OD/ERS/174, Narpuh Reserve Forest, BL-II (Ratachera), 12.09.1998; 1 ex., I/OD/ERS/175, Narpuh Reserve Forest, BL-II (Ratachera), 12.09.1998; 1 ex., I/OD/ERS/176, Narpuh Reserve Forest, BL-II (Ratachera), 13.09.1998; 2 exs., I/OD/ERS/186, Saipung Wildlife Sanctuary, Jaintia hills, 09.09.1998; 1 ex., I/OD/ERS/187, Saipung Wildlife Sanctuary, 09.09.1998; 2 exs., I/OD/ERS/188, Narpuh Reserve Forest, BL-II (Lumshnong), 13.09.1998; 2 exs. I/OD/ERS/189, Narpuh Reserve Forest, BL-II (Lumshnong), 13.09.1998.

Distribution within N.E. India : Meghalaya (East Khasi hills, Garo hills), Assam, Manipur, Nagaland.

Elsewhere : INDIA : Punjab; SRI LANKA; MYANMAR.

8. *Crocothemis servilia* (Drury)

1770. *Libellula servilia* Durry, 111, *Exot. Ins.*, 1 : 112

Collection localities : 2 exs., I/OD/ERS/147, Saipung Reserve Forest, 21.12.1999; 1 ex., I/OD/ERS/149, Saipung Wildlife Sanctuary, 19.12.1999; 2 exs., I/OD/ERS/150, Saipung (Kopili river), 20.12.1999; 1 ex., I/OD/ERS/151, Saipung (Diastom village), 17.12.1999.

Distribution within N.E. India : Meghalaya (East Khasi hills, Jaintia hills), Manipur.

Elsewhere : INDIA : Punjab, Rajasthan; NEPAL; BANGLADESH; MYANMAR; JAPAN.

9. *Diplacodes trivialis* (Rambur)

1842. *Libellula trivialis* Rambur, *Hist. Nat. Ins. Nevreb.*, 115.

Collection localities: 1 ex., I/OD/ERS/146, Saipung (Diastom village), 17.12.1999; 1 ex., I/OD/ERS/148, Saipung (Umphong river), 18.12.1999; 1 ex. I/OD/ERS/167, Narpuh Reserve Forest, BL-II (Umkiang, Dona river), 14.05.1999.

Distribution within N.E. India : Meghalaya (Khasi hills, Jaintia hills), Mizoram, Nagaland, Manipur.

Elsewhere : INDIA : Andhra Pradesh, Kerala, Maharashtra; CHINA; MYANMAR.

10. *Neurothemis fulvia* (Drury)

1773. *Libellula fulvia*, Drury I, 11. *Exot. Ins.* 2 : 84.

Collection locality : 1 ex., I/OD/ERS/171, Umkiang and around, Jaintia hills, 16.05.1999.

Distribution within N.E. India : Meghalaya (Khasi hills, Jaintia hills, Garo hills), Manipur, Mizoram, Nagaland, Assam.

Elsewhere : INDIA : Bihar, Kerala, Punjab, West Bengal; CHINA; MYANMAR; THAILAND; INDONESIA.

11. *Trithemis aurora* (Burmeister)

1839. *Libellula aurora* Burmeister, *Handh. Ent.*, 2 : 859.

Collection localities : 1 ex., I/OD/ERS/164, Saipung Wildlife Sanctuary, Jaintia hills, 09.09.1998 ; 1 ex., I/OD/ERS/165, Saipung Wildlife Sanctuary, 09.09.1998.

Distribution within N.E. India : Meghalaya (Garo hills, Khasi hills and Jaintia hills).

Elsewhere : INDIA : West Bengal; SRI LANKA; MYANMAR; INDONESIA; TAIWAN.

12 *Tholymis tillarga* Fabricius

1798. *Libellula tillarga* Fabricius, *Ent. Syst. Suppl.* 285

Collection locality : 1 ex., I/OD/ERS/156, Saipung Wildlife Sanctuary, Jaintia hills, 21.12.1999.

Distribution within N.E. India : Meghalaya (Garo hills, Khasi hills, Jaintia hills), Assam, Manipur.

Elsewhere : INDIA : Uttar Pradesh, Kerala, Orissa, Punjab, West Bengal; MYANMAR.

13. *Urothemis signata signata* (Rambur)

Libellula sanguinea Burmeister. *Handh. Ent.* I : 853.

Collection locality : 1 ex., I/OD/ERS/181, Narpuh Reserve Forest, BL-II, Sonapur, Jaintia hills, 13.09.1998.

Distribution within N.E. India : Meghalaya (Khasi hills, Jaintia hills), Assam, Manipur.

Elsewhere : INDIA : Bihar, Kerala, Orissa, West Bengal; CHINA; BANGLADESH; SRI LANKA; MYANMAR.

Order HEMIPTERA
Family NEPIDAE

1. *Laccotrephes robustus* Stal

1870. *Laccotrephes robustus* Stal, *Ofvers. K. Vet. Akad. Forh.* 27 : 706.

Collection locality : 1 ex., Regd. No. I/HEM/ERS/24, Kopili river, Saipung, Jaintia hills, Meghalaya, 20.12.1999.

Distribution within N.E. India : Meghalaya (East Khasi hills, Jaintia hills), Nagaland.

Elsewhere : MYANMAR; FORMOSA; INDONESIA; PHILIPPINES.

2. *Laccotrephes ruber* (Linnaeus)

1974. *Nepas ruber* Linnaeus, *Mus. Lad. Ulr.*, 1 : 165.

Collection locality : 1 ex., Regd. No. I/HEM/ERS/26, Kopili river, Saipung, Jaintia hills, Meghalaya, 20.12.1999.

Distribution within N.E. India : Meghalaya (East Khasi hills, West Khasi hills, West Garo hills, East Garo hills), Nagaland.

Elsewhere : INDIA : West Bengal, Himachal Pradesh, Jammu & Kashmir, Maharashtra, Orissa; CHINA; FORMOSA; JAPAN; SRI LANKA.

Family VELIIDAE

3. *Microvelia lineatipes* Paiva

1919. *Microvelia lineatipes* Paiva, *Rec. Indian Mus.* 16 : 362.

Collection locality : 54 exs., Regd. No. I/HEM/ERS/45, Saipung Wildlife Sanctuary, Jaintia hills, Meghalaya, 21.12.1999.

Distribution within N.E. India : Meghalaya (West Garo hills, Jaintia hills).

Order COLEOPTERA

Family DYTISCIDAE

1. *Cybister posticus* Aube

1838. *Cybister posticus* Aube, in *Dejean's species Coleopteres*, 6 : 87.

Collection locality : 1 ex. Regd. No. I/CO/ERS/1, Kopili River, Saibul, Saipung Wildlife Sanctuary, Jaintia Hills, Meghalaya.

Distribution within N.E. India : Meghalaya, Assam, Manipur.

Elsewhere : INDIA : West Bengal, Maharashtra.

2. *Hydaticus fabricii* Macleay

1833. *Hydaticus fabricii* Macleay, *Annulossa javanica* : 134.

Collection locality : 3 exs. Regd. No. I/CO/ERS/2, Kopili river, Saibul, Saipung Wildlife Sanctuary, Jaintia Hills, Meghalaya.

Distribution within N.E. India : Meghalaya, Assam, Manipur.

Elsewhere: INDIA : West Bengal, Bihar, Panjab, Orissa, NEPAL, MYANMAR, INDONESIA.

Family CHRYSOMELIDAE

3. *Craspedonta leayana* (Latreille)

1807. *Imatidium leayana* Latreille, *Gen. Crust. Et Ino.*, 3 : 50

Collection locality : 1 ex. Regd. No. I/CO/ERS/3, Kopili River, Saibul, Saipung Wildlife Sanctuary, Jaintia Hills, Meghalaya.

Distribution within N.E. India : Meghalaya (East Khasi Hills and Garo Hills), Arunachal Pradesh, Assam, Nagaland.

Elsewhere : MYANMAR, LAOS, VIETNAM.

HYMENOPTERA

119 examples of ants collected from the area are identified into 14 species, 13 genera. Identification is based on Bingham (1903) and Bolton (1994).

Order HYMENOPTERA
Family FORMICIDAE
Sub-Family PONERINAE

1. *Gnamptogenys bicolor* (Emery)

1889. *Ectatomma (Stictopnera) bicolor*, Emery, *Ann. Mus. Civ. Stor. Nat. Genova*, 27 : 493.

Material examined : 1 ex. Regd. No. A1/13039 Narpuh I, 08.01.2003.

Distribution within N.E. India : Meghalaya, Assam.

Elsewhere : MYANMAR, CHINA, MALAY PENINSULA.

2. *Leptogenys processionalis* (Jerdon)

1851. *Ponera processionalis* Jerdon, *Madras. J. Lit. Sci.*, 17 : 118.

Material examined : 7 exs., Regd. No. A1/13040 Narpuh I, 10.01.2003.

Distribution within N.E. India : Meghalaya.

Elsewhere : KERALA.

Remarks : This species is recorded for the first time from N.E. India.

3. *Odontoponera transversa* (F. Smith)

1857. *Ponera transversa* F. Smith, *J. Proc. Linn. Soc., Zool. London*, 2 : 68.

Material examined 5 exs. Regd. No. A1/13041 Narpuh I, 12.01.2003.

Distribution within N.E. India Meghalaya.

Elsewhere : Throughout India; ANNAN, BORNEA, CHINA, JAVA, HIMALAYAS, MYANMAR, PHILLIPINES, SIAM, SINGAPORE, SUMATRA.

4. *Pachycondyla leeuwenhoekii* (Forel)

1866. *Ponera leeuwenhoekii* Forel, *J. As. Soc. Beng.*, 55 : 244.

Material examined : 2 exs. Regd. No. A1/13042 Narpuh I, 12.01.2003.

Distribution within N.E. India : Assam, Meghalaya.

Elsewhere : INDIA, West Bengal, MYANMAR.

Sub-Family PSEUDOMYRMECINAE

5. *Tetraponera nigra* (Jerdon)

1851. *Eciton nigrum* Jerdon, *Madras. J. Lit. Sci.* 17 : 112.

Material examined : 2 exs. Regd. No. A1/13043 Narpuh I, 12.01.2003.

Distribution within N.E. India : Meghalaya.

Elsewhere : South India; BORNEA, PHILLIPINES.

Sub-Family MYRMICINAE

6. *Lophomyrmex bedoti* Emery

1893. *Lophomyrmex bedoti* Emery, *Rev. Suisse. Zool.*, 1 : 192.

Material examined : 2 exs. Regd. No. A1/13044 Narpuh I, 10.01.2003.

Distribution within N.E. India : Meghalaya.

Elsewhere : MYANMAR, SUMATRA.

7. *Monomorium floricola* (Jerdon)

1851. *Atta floricola* Jerdon, *Madras. J. Lit. Sci.* 17 : 107.

Material examined : 3 exs. Regd. No. A1/13045 Narpuh I, 12.01.2003.

Distribution within N.E. India : Meghalaya.

Elsewhere : Throughout India; OCEANIA.

8. *Monomorium pharaonis* (Linnaeus)

1758. *Formica pharaonis* Linnaeus, *Syst. Nat* 10 : 580.

Material examined : 2 exs. Regd. No. A1/13046 Narpuh I, 12.01.2003.

Distribution within N.E. India : Meghalaya.

Elsewhere : Throughout India; TROPICAL REGIONS OF BOTH THE HEMISPHERES.

9. *Pheidole sagei* Forel

1902. *Pheidole sagei* Forel, *Revue Suisse de Zoologie* 10 : 174 and 192.

Material examined : 3 exs. Regd. No. A1/13047 Narpuh I, 08.01.2003.

Distribution within N.E. India : Meghalaya.

Elsewhere : North-West Himalayas.

Sub-Family DOLICHODERINAE

10. *Dolichoderus thoracicus* (Smith)

1860. *Tapinoma thoracica* Smith, F., *J. Proc. Linn. Soc. Zool.* 5 : 69

Material examined : 7 exs. Regd. No. A1/13048 and 13049 Narpuh I, 08.01.2003 & 12.01.2003

Distribution within N.E. India : Meghalaya.

Elsewhere : Sikkim, Western India; MYANMAR, MALAYA, JAVA, TENASSERIM.

Sub-Family FORMICINAE

11. *Anoplolepis gracilipes* (Smith)

1857. *Formica gracilipes* Smith, F., *J. Proc. Linn. Soc. London, Zool.* 2 : 55.

Material examined : 4 exs. Regd. No. A1/13051 Narpuh II, 30.09.2002.

Distribution within N.E. India : Meghalaya.

Elsewhere : Throughout India; MYANMAR.

12. *Oecophylla smargdina* (Fabricius)

1775. *Formica smargdina* Fabricius, *Syst. Ent.*, : 828.

Material examined : 75 exs. Regd. No. A1/13052 Narpuh I, 10.01.2003.

Distribution within N.E. India : Meghalaya.

Elsewhere : Throughout India; CHINA, MYANMAR, NEW BRITAIN, SRI LANKA.

13. *Paratrechina longicornis* (Latreille)

1802. *Formica longicornis* Latreille, *Nat. Hist. Fourmis*, : 113.

Material examined : 4 exs. Regd. No. A1/13053 Narpuh I, 10.01.2003.

Distribution within N.E. India : Meghalaya.

Elsewhere : Throughout India.

14. *Polyrachis furcata* Smith, F.

1858. *Polyrachis furcatus* Smith, F., *Cat. Hym. Brit. Mus.*, 6 : 64.

Material examined : 2 exs. Regd. No. A1/13054 Narpuh I, 08.01.2003.

Distribution within N.E. India : Assam, Meghalaya.

Elsewhere : BORNEO, MYANMAR.

Remarks : The 14 species of ants reported here from Narpuh RF, Block, I & II is only a very small fraction of the available fauna of the conservation area.

PISCES

The area is rich in diversified fish fauna. Fish Fauna of Meghalaya (Sen, 1995) reported 77 species under 25 families and 9 orders occurring throughout the district of Jaintia Hills. A total of 995 examples of fishes belonging to 74 species under 46 genera, 23 families and 7 orders are reported here. Material examined, size range, collection localities, distribution within North East India have been mentioned for each species. The systematic arrangement and nomenclatural status followed after Jayaram (1999).

Phylum	CHORDATA
Class	ACTINOPTERYGII
Order	CYPRINIFORMES
Family	CYPRINIDAE

1. *Salmostoma bacaila* (Hamilton-Buchanan)

1882. *Cyprinus bacaila* Hamilton-Buchanan, *Fishes of Ganges* : 265, 384, p. 1.8, fig. 76 (Type locality : Freshwater rivers of Gangetic Provinces).

Collection localities : 11 exs. (95 mm - 135 mm TL, Regd. No. V/F/486), Narpuh Reserve Forest, BL-II (Lubha R.) 11.09.1998; 10 exs. (107 mm - 136 mm TL, Regd. No. V/F/489), Narpuh R.F. BL-II (Lubha R.) 11.09.1998; 11 exs. (100 mm - 130 mm TL, Regd. No. V/F/495), Narpuh R.F. BL-II (Lubha R.). 11.09.98.

Distribution within N.E. India : Meghalaya (East Khasi hills, East, West and South Garo hills, Jaintia hills) , Assam, Arunachal Pradesh, Manipur, Tripura.

Elsewhere : INDIA : Throughout India except Kerala, Karnataka, Tamil Nadu; BANGLADESH; MYANMAR; NEPAL; PAKISTAN.

Remarks : Not very commonly occurring species within the area under report.

+ 2. *Salmostoma phulo phulo* (Hamilton-Buchanan)

1822. *Cyprinus phulo* Hamilton-Buchanan, *Fishes of Ganges* : 262, 384 (Type locality : North-Eastern parts of Bengal).

Collection localities : 1 ex. (80 mm TL, Regd. No. V/F/490) Narpuh R.F., BL-II Lubha R. 11.09.1998; 1 ex. (71 mm TL, Regd. No. V/F/523) Narpuh R.F., BL-II, Lubha R. 13.09.1998.

Distribution within N.E. India : Meghalaya (West Garo hills), Assam, Arunachal Pradesh.

Elsewhere : INDIA : Ganga River system; BANGLADESH.

Remarks: Reported for the first time from Jaintia hills district. Not very commonly occurring species.

3. *Barilius barila* (Hamilton-Buchanan)

1822. *Cyprinus (Barilius) barila* (Hamilton-Buchanan), *Fishes of Ganges* : 267, 384 (Type locality : Rivers of Northern Bengal).

Collection locality : 2 exs. (90 mm TL, Regd. No. V/F/491) Narpuh R.F., BL-II Lubha R. 11.09.1998.

Distribution within N.E. India : Meghalaya (East and West Garo hills, Jaintia hills), Assam, Nagaland, Manipur, Tripura.

Elsewhere : INDIA : W. Bengal, Bihar, Delhi, Jammu & Kashmir, Uttar Pradesh, Rajasthan, Orissa, Madhya Pradesh, Mysore; BANGLADESH; MYANMAR; NEPAL.

Remarks : Not very commonly occurring species like other region of N.E. India. It's status at National level is vulnerable.

4. *Barilius barna* (Hamilton-Buchanan)

1822. *Cyprinus (Barilius) barna* Hamilton-Buchanan, *Fishes of Ganges* : 268, 384 (Type locality : Yamuna river and Brahmaputra river).

Collection localities : 5 exs. (63 mm-75 mm TL, Regd. No. V/F/487), Narpuh R.F., BL-II Lubha R. 11.09.1998; 3exs. (65 mm-75 mm TL, Regd. No. V/F/493), Narpuh R.F., BL-II Lubha R. 11.09.1998; 3exs. (60 mm-68 mm TL, Regd. No. V/F/497), Narpuh R.F., BL-II Lubha R. 11.09.1998; 1ex. (62 mm TL, Regd. No. V/F/520), Narpuh R.F., BL-II Lubha R. 13.09.1998.

Distribution within N.E. India : Meghalaya (East Khasi hills, East, West and South Garo hills, Jaintia hills), Assam, Arunachal Pradesh, Mizoram, Manipur, Tripura.

Elsewhere : INDIA : West Bengal, Bihar, Orissa, Delhi, Uttar Pradesh, Rajasthan, Madhya Pradesh, Karnataka; BANGLADESH; MYANMAR; NEPAL.

Remarks : Not very commonly occurring species like other region of N.E. India.

5. *Barilius bendelisis* (Hamilton-Buchanan)

1807. *Cyprinus bendelisis* Hamilton-Buchanan, *Journey in Mysore*, 3 : 345, pl. 32 (Type locality : Vedwati stream, headwaters of Krishna river near Heriuru, Mysore).

Collection localities : 1 ex. (90 mm TL, Regd. No. V/F/492), Narpuh R.F., BL-II, Lubha

R. 11.09 1998; 1 ex. (45 mm TL, Regd. No. V/F/521), Narpuh R.F., BL-II, Lukha R. 13.09.1998; 1 ex. (122 mm TL, Regd. No. V/F/526), Narpuh R.F., BL-II, Lukha R., 13.09.1998; 4 exs. (24 mm-35 mm TL, Regd. No. V/F/1651), Laichiki R. Narpuh R.F. BL-I, 04.03.2003; 1 ex. (56 mm TL, Regd. No. V/F/1658), Khorkara, Narpuh R.F., BL-I, 06.03.2003; 1 ex. (19 mm TL, Regd. No. V/F/1670), Ampasen, Narpuh R.F. BL-I, 07.03.2003; 36 exs. (17 mm-43 mm TL, Regd. No. V/F/1683), Umblei, Narpuh R.F. BL-I, 08.03.2003; 11 exs. (21mm-60 mm TL, Regd. No. V/F/1705), Rymplung, Narpuh R.F. BL-I, 06.03.2003; 1 ex. (34 mm TL, Regd. No. V/F/1716), Kharpyrtap, Narpuh R.F., BL-I, 06.03.2003.

Distribution within N.E. India : Meghalaya (East Khasi hills, East, West, South Garo hills, Jaintia hills), Assam, Arunachal Pradesh, Mizoram, Nagaland, Manipur, Tripura.

Elsewhere : INDIA : W. Bengal, Bihar, Uttar Pradesh, Rajasthan, Himachal Pradesh, Punjab, Orissa, Coimbatore, Palghat, Nilgiri, Tamil Nadu, Karnataka, Mettupalayam; BANGLADESH; NEPAL; PAKISTAN; SRI LANKA.

Remarks : Not very commonly occurring species like other region of N.E. India.

+ 6. *Barilius tileo* (Hamilton-Buchanan)

1822. *Cyprinus tileo* Hamilton-Buchanan, *Fishes of Ganges* : 276, 385 (Type locality : Kosi river, Uttar Pradesh).

Collection localities : 1 ex. (178 mm TL, Regd. No. V/F/496), Narpuh R.F., BL-II Lubha R., 11.09.1998.

Distribution within N.E. India : Meghalaya (East and West Garo hills), Assam, Arunachal Pradesh, Manipur, Tripura.

Elsewhere : INDIA : W. Bengal, E. Himalayas; BANGLADESH; NEPAL; PAKISTAN.

Remarks : Reported for the first time from Jaintia hills district. Not very commonly occurring species.

7. *Esomus danricus* (Hamilton-Buchanan)

1822. *Cyprinus danrica* Hamilton-Buchanan, *Fishes of Ganges* : 325, 390, pl. 16, fig. 88 (Type locality : Ponds & ditches of Bengal).

Collection localities : 5 exs. (30 mm – 48 mm TL, Regd. No. V/F/532), Narpuh R.F., BL-II, Lubha R. 14.09.1998; 7 exs. (35 mm-57 mm TL, Regd. No. V/F/764), Narpuh R.F. BL-II, Lubha R. 16.05.1999; 1 ex. (49 mm TL, Regd. No. V/F/1458), Narpuh R.F. BL-II, Wahkoh, 02.10.2002; 1 ex. (68 mm TL, Regd. No. V/F/1669); Narpuh R.F. BL-I, Ampasen, 07.03.2003; 2 exs. (50 mm-61 mm TL, Regd. No. V/F/1710), Narpuh R.F. BL-I, Rymplung, 06.03.2003.

Distribution within N.E. India : Meghalaya (East Khasi hills, Ri-Bhoi, East, West and South Garo hills, Jaintia hills), Assam, Arunachal Pradesh, Nagaland, Manipur, Tripura.

Elsewhere : Throughout India; BANGLADESH; MYANMAR; MALAYA; NEPAL; PAKISTAN; SRI LANKA; THAILAND; S. VIETNAM.

Remarks : Commonly occurring species.

8. *Danio aequipinnatus* (McClelland)

1839. *Perilampus aequipinnatus* McClelland, *Asiat. Res.* 19 (2) : 393, pl.60, fig.1 (Type locality : Assam).

Collection localities : 1 ex. (27 mm TL, Regd. No. V/F/711), Saipung WLS, 19.02.1999; 3 exs. (25 mm-51 mm TL, Regd. No. V/F/774), Narpuh R.F. BL-II, Lubha R., 13.05.1999; 13 exs. (23 mm-44 mm TL, Regd. No. V/F/1116), Saipung WLS, Kopili R., 20.12.1999; 7 exs. (30 mm-65 mm TL, Regd. No. V/F/1118), Saipung WLS, Umphang R., 19.12.1999; 11 exs. (21 mm-54 mm TL, Regd. No. V/F/1124), Saipung WLS, Kopili R., 20.12.1999; 2 exs. (48 mm-54 mm TL, Regd. No. V/F/1470), Narpuh R.F. BL-II, R. Malidhar, 01.10.2002; 11 exs. (25 mm-59 mm TL, Regd. No. V/F/1681), Narpuh R.F. BL-I, Umblei, 08.03.2003.

Distribution within N.E. India : Meghalaya (East and West Khasi hills, Ri-Bhoi, East, West and South Garo hills, Jaintia hills), Assam, Arunachal Pradesh, Mizoram, Nagaland, Manipur, Tripura.

Elsewhere : Throughout India; BANGLADESH; MYANMAR; NEPAL; SRI LANKA; THAILAND.

Remarks : Commonly occurring species. In some population, maxillary and rostral barbels are very minute, single lateral band broader anteriorly, narrower posteriorly. May be population variation.

9. *Danio dangila* (Hamilton-Buchanan)

1822. *Cyprinus dangila* Hamilton-Buchanan, *Fishes of Ganges* : 321, 390 (Type locality : mountain streams of Mongher, Bihar)

Collection localities : 1 ex. (21 mm TL, Regd. No. V/3697), Narpuh R.F., 23.01.84; 1 ex. (25 mm TL, Regd. No. V/F/597), Saipung WLS, Kopili R. 11.12.1998; 1 ex. (56 mm TL, Regd. No. V/F/1573), Narpuh R.F. BL-I, R. Prang, 10.01.2003; 3 exs. (50 mm-62 mm TL, Regd. No. V/F/1692), Narpuh R.F. BL-I, Amsing, 04.03.2003; 1 ex. (58 mm TL, Regd. No. V/F/1699), Narpuh R.F. BL-I, Amsing, 04.03.2003; 1 ex. (60 mm TL, Regd. No. V/F/1715), Narpuh R.F. BL-1, Passadwar, 05.03.2003.

Distribution within N.E. India : Meghalaya (East and West Khasi hills, Ri-Bhoi, East and West Garo hills, Jaintia hills), Assam, Arunachal Pradesh, Mizoram, Nagaland, Manipur, Tripura.

Elsewhere : INDIA : W. Bengal, Bihar, Uttar Pradesh., Madhya Pradesh; BANGLADESH; MYANMAR; NEPAL.

Remarks : Not very commonly occurring, like other region of Meghalaya.

10. *Danio devario* (Hamilton-Buchanan)

1822. *Cyprinus devario* Hamilton-Buchanan, *Fishes of Ganges* : 341, 393, pl.6, fig.94 (Type locality : rivers and ponds of Bengal).

Collection localities : 1 ex. (73 mm TL, Regd. No. V/F/505), Narpuh R.F. BL-II, Malidhar R. 12.09.1998; 2 exs. (61mm-71mm TL, Regd. No. V/F/519), Narpuh R.F. BL-II, Lukha R., 13.09.1998.

Distribution within N.E. India : Meghalaya (East Khasi hills, West and South Garo hills, Jaintia hills), Assam, Arunachal Pradesh, Tripura.

Elsewhere : INDIA : W. Bengal, E. Himalayas, W. Himalayas, Eastern Punjab, Uttar Pradesh, Bihar, Orissa, Madhya Pradesh, Ahemadabad, Krishna-Godavari river system, Deccan; BANGLADESH; MYANMAR; NEPAL; PAKISTAN.

Remarks : Not very commonly occurring like other region of N.E. India.

11. *Brachydanio rerio* (Hamilton-Buchanan)

1822. *Cyprinus rerio* Hamilton-Buchanan, *Fishes of Ganges* : 323, 390 (Type locality : Kosi river, Uttar Pradesh).

Collection localities : 1 ex. (23 mm TL, Regd. No. V/F/531), Narpuh R.F. BL-II, Umkiang stream, 14.09.1998; 4exs. (26 mm-35 mm TL, Regd. No. V/F/769), Narpuh R.F. BL-II, Umkiang stream, 14.05.1999; 3 exs. (23 mm-27 mm TL, Regd. No.V/F/1454), Narpuh R.F. BLII, Wahkoh, 02.10.2002; 2 exs. (24 mm-27 mm TL, Regd. No.V/F/1463), Narpuh R.F. BL- II, R. Malidhar, 01.10.2002; 3 exs. (23 mm-29 mm TL, Regd. No.V/F/1471), Narpuh R.F. BL-II, R. Malidhar, 01.10.2002.

Distribution within N.E. India : Meghalaya (East and West Khasi hills, Ri-Bhoi, East, West and South Garo hills, Jaintia hills), Assam, Arunachal Pradesh, Mizoram, Nagaland, Manipur, Tripura.

Elsewhere : Throughout India; BANGLADESH; MYANMAR; NEPAL; PAKISTAN.

Remarks : Commonly occurring species.

*12. *Rasbora daniconius* (Hamilton-Buchanan)

1822. *Cyprinus daniconius* Hamilton-Buchanan, *Fishes of Ganges* : 327, 391, pl.15, fig. 89 (Type locality : rivers of southern Bengal).

Collection locality : 1 ex. (64 mm TL, Regd. No. V/3506), Narpuh R.F., 13.09.1983.

Distribution within N.E. India : Meghalaya (Ri-Bhoi, East and West Garo hills, Jaintia hills), Assam, Arunachal Pradesh, Manipur, Tripura.

Elsewhere : Throughout India; BANGLADESH; MYANMAR; MALAYA; MALAY ARCHIPELAGO; NEPAL; PAKISTAN; SRI LANKA; THAILAND; ZANZIBAR.

Remarks : Not very commonly occurring in the region under report.

***13. *Amblypharyngodon mola* (Hamilton-Buchanan)**

1822. *Cyprinus mola* Hamilton-Buchanan, *Fishes of Ganges* : 334, 392, pl. 38, fig. 92 (Type locality : ponds & rivers of Gangetic provinces).

Collection locality : 2 exs. (58 mm – 59 mm TL, Regd. No. V/4025), Narpuh R.F., 13.09.1983.

Distribution within N.E. India : Meghalaya (East Khasi hills, Ri-Bhoi, East and West Garo hills, Jaintia hills), Assam, Arunachal Pradesh, Manipur, Tripura.

Elsewhere : Throughout India except Malabar; BANGLADESH; MYANMAR; NEPAL; PAKISTAN.

Remarks : Not very commonly occurring like other region of N.E. India.

14. *Tor putitora* (Hamilton-Buchanan)

1822. *Cyprinus putitora* Hamilton-Buchanan, *Fishes of Ganges* : 303, 388 (Type locality : eastern parts of Bengal).

Collection locality : 4 exs. (33 mm – 45 mm TL, V/F/1002), Narpuh R.F. BL-II, 07.10.1999.

Distribution within N.E. India : Meghalaya (Ri-Bhoi, West Garo hills, Jaintia hills), Assam, Arunachal Pradesh, Manipur, Tripura.

Elsewhere : INDIA : All along the Himalayas including Kashmir; AFGHANISTAN; BANGLADESH; NEPAL; PAKISTAN.

Remarks : Not very commonly occurring species in the region under report. It's status at National level is endangered.

+15. *Naziritor chelynoides* McClelland

1839. *Barbus chelynoides* McClelland, *Asiat. Res.*, 19 (2) : 271, 340, pl. 57, fig. 5 (Type locality : Simla).

Collection locality : 1 ex. (36 mm TL, Regd. No. V/F/1117), Saipung WLS, Umphang R., 19.12.1999.

Distribution within N.E. India : Meghalaya (West Khasi hills), Assam.

Elsewhere : INDIA : Ganga River system, E. Himalayas; PAKISTAN.

Remarks : Reported for the first time from Jaintia Hills district. Rarely occurring species. It's status is endangered.

16. *Neolissocheilus hexagonolepis* (McClelland)

1839. *Barbus hexagonolepis* McClelland, *Asiat. Res.*, 19 (2) : 270, 340, pl. 41, fig. 3 (Type locality : Upper Assam).

Collection localities : 5 exs. (76 mm – 111 mm TL, Regd. No. V/F/603), Saipung WLS. 09.12.1998; 1 ex. (161 mm TL, Regd. No. V/F/605), Saipung WLS., 09.12.1998; 1 ex. (24 mm TL, Regd. No. V/F/607), Saipung WLS., 09.12.1998.

Distribution within N.E. India : Meghalaya (East and West Khasi hills, Ri-Bhoi, East, West and South Garo hills, Jaintia hills), Assam, Arunachal Pradesh, Mizoram, Nagaland, Manipur, Tripura.

Elsewhere : INDIA : Darjeeling & E. Himalayas; BANGLADESH; MYANMAR; CHINA; MALAYSIA; NEPAL; SUMATRA; THAILAND.

Remarks : Not very commonly occurring like other parts of Meghalaya.

+*17. *Oreichthys cosuatis* (Hamilton-Buchanan)

1822. *Cyprinus cosuatis* Hamilton-Buchanan, *Fishes of Ganges* : 338, 392 (Type locality : Kosi river, Uttar Pradesh).

Collection locality : 4 exs. (37 mm – 40 mm TL, Regd. No. V/3941), Narpuh R.F., 19.01.1984.

Distribution within N. E. India : Assam, Arunachal Pradesh.

Elsewhere : INDIA: Karnataka, Kerala, Madhya Pradesh, Maharashtra, W. Bengal. BANGLADESH; THAILAND.

Remarks : Reported for the first time from Jaintia hills district as well as from Meghalaya. Rarely occurring species in this region.

18. *Puntius chola* (Hamilton-Buchanan)

1822. *Cyprinus chola* Hamilton-Buchanan, *Fishes of Ganges* : 312, 289 (Type locality : north eastern part of Bengal).

Collection localities : 1 ex. (70 mm TL, Regd. No. V/F/504), Narpuh R.F. BL-II,

Malidhar R., 12.09.1998; 1 ex. (90 mm TL, Regd. No. V/F/528), Narpuh R.F. BL-II, Lukha R., 13.09.1998; 1 ex. (45 mm TL, Regd. No. V/F/766), Narpuh R.F. BL-II, Lubha R., 16.05.1999; 3 exs. (49 mm-69 mm TL, Regd. No. V/F/1465), Narpuh R.F. BL-II, R. Malidhar, 01.10.2002.

Distribution within N.E. India : Meghalaya (East Khasi hills, Ri-Bhoi, East, West and South Garo hills, Jaintia hills), Assam, Arunachal Pradesh, Manipur, Tripura.

Elsewhere : Throughout India; BANGLADESH; MYANMAR, NEPAL; PAKISTAN; SRI LANKA.

Remarks : Not very commonly occurring like other parts of N.E. India. Though it is a common species, but its status is at present vulnerable.

19. *Puntius conchoni* (Hamilton-Buchanan)

1822. *Cyprinus conchoni* Hamilton-Buchanan, *Fishes of Ganges*: 317, 389 (Type locality : ponds of north east Bengal; Kosi river and Ami river).

Collection localities : 1 ex. (30 mm TL, Regd. No. V/3962), Narpuh R.F. BL-II, Lubha R. 11.09.1983; 1 ex. (40 mm TL, Regd. No. V/F/765), Narpuh R.F. BL-II, Lubha R., 16.05.1999; 1 ex. (82 mm TL, Regd. No. V/F/1567), Narpuh R.F. BL-I, Kharkara, 12.01.2003; 2 exs. (25 mm-29 mm TL, Regd. No. V/F/1657), Narpuh R.F. BL-I, Passadwar, 07.03.2003; 1 ex. (64 mm TL, Regd. No. V/F/1668), Narpuh R.F. BL-I, Ampasen, 7.3.03; 1 ex. (62 mm TL, Regd. No. V/F/1703), Narpuh R.F. BL-I, Rymplung, 6.3.03.

Distribution within N.E. India : Meghalaya (West Garo hills, Jaintia hills), Assam, Arunachal Pradesh, Mizoram, Nagaland, Manipur, Tripura.

Elsewhere: INDIA: W. Bengal, Bihar, Uttar Pradesh, Punjab, Orissa, Eastern & Western Himalayas, Darjeeling, Deccan; AFGHANISTAN; BANGLADESH; NEPAL; PAKISTAN.

Remarks : Commonly occurring in the region. Though it is a common species for N.E. India, but its status is at present vulnerable.

*20. *Puntius gelius* (Hamilton-Buchanan)

1822. *Cyprinus gelius* Hamilton-Buchanan, *Fishes of Ganges* : 320, 390, pl. 145, fig. 3 (Type locality : ponds and ditches of northeast Bengal).

Collection locality : 5 exs. (25 mm-31 mm TL, Regd. No. V/3938), Narpuh R.F., 19.01.1984.

Distribution within N.E. India : Meghalaya (West Khasi hills, Jaintia hills), Assam, Tripura.

Elsewhere : INDIA : W. Bengal, Bihar, Orissa; BANGLADESH; PAKISTAN.

Remarks : Rarely occurring species in the region under report. It's status is vulnerable.

21. *Puntius sarana sarana* (Hamilton-Buchanan)

1822. *Cyprinus sarana* Hamilton-Buchanan, *Fishes of Ganges* : 307,388 (Type locality: ponds and rivers of Bengal).

Collection locality : 1 ex. (150 mm TL, Regd. No. V/F/1479), Narpuh RF, BL-II, Sonapur area, 30.09.2002.

Distribution within N.E. India : Meghalaya (West Khasi hills, West and South Garo hills), Assam, Arunachal Pradesh, Manipur, Tripura.

Elsewhere : INDIA (Throughout India except peninsular India, south of Krishna); AFGHANISTAN; BANGLADESH; BHUTAN; MYANMAR; NEPAL; PAKISTAN; SIKKIM; MALAYA; THAILAND; JAVA; BORNEO; SRI LANKA; CHINA.

Remarks : Rarely occurring species in the region under report. It's status is vulnerable at National level.

*22. *Puntius shalynius* Yazdani & Talukdar

1975. *Puntius shalynius* Yazdani & Talukdar, *J. Bombay nat. Hist. Soc.*, 72 (1) : 218 (Type locality : Barapani lake near Shillong, Meghalaya).

Collection locality : 3 exs. (43 mm – 49 mm TL, Regd. No. V/9383), Narpuh R.F. BL-II, Lubha R., 21.04.1990.

Distribution within N.E. India : Meghalaya (East and West Khasi hills, Ri-Bhoi, Jaintia hills), Assam, Arunachal Pradesh, Manipur.

Elsewhere : Restricted so far to N.E. India only.

Remarks : Though it is common species for Meghalaya, but its occurrence in the region under report is not very common. It's status is vulnerable at National level.

23. *Puntius sophore* (Hamilton-Buchanan)

1822. *Cyprinus sophore* Hamilton-Buchanan, *Fishes of Ganges* : 310, 389, pl.19, fig.86 (Type locality : ponds & rivers in the Gangetic provinces).

Collection localities : 1 ex. (62 mm TL, Regd. No. V/F/533), Narpuh R.F. BL-II, Lubha R., 14.09.1998; 6 exs. (58 mm-65 mm TL, Regd. No. V/F/1459), Narpuh R.F. BL-II, Wahkoh, 02.10.2002; 2 exs. (57 mm-66 mm TL, Regd. No. V/F/1476), Narpuh R.F. BL-II, R. Malidhar, 01.10.2002

Distribution within N.E. India : Meghalaya (East and West Khasi hills, Ri-Bhoi, West Garo hills, Jaintia hills), Assam, Arunachal Pradesh, Mizoram, Manipur, Tripura.

Elsewhere : Throughout India; BANGLADESH; MYANMAR; NEPAL; PAKISTAN; YUNNAN.

Remarks : It's occurrence in the region under report is not very common like other parts of Meghalaya.

24. *Puntius terio* (Hamilton-Buchanan)

1822. *Cyprinus terio* Hamilton-Buchanan, *Fishes of Ganges* : 313, 389 (Type locality : North-East Bengal).

Collection localities : 1 ex. (18 mm TL, Regd. No. V/F/778), Narpuh R.F. BL-II, Malidhar R., 15.05.1999; 1 ex. (23 mm TL, Regd. No. V/F/1682), Narpuh R.F. BL-I, Umblei, 08.03.2003 ; 17 exs. (20 mm-26 mm TL, Regd. No. V/F/1704), Narpuh R.F. BL-I, Rymplung, 06.03.2003.

Distribution within N.E. India : Meghalaya (East Khasi hills, West Garo hills, Jaintia hills), Assam, Mizoram, Manipur, Tripura.

Elsewhere : INDIA : W. Bengal to Punjab, Orissa; BANGLADESH; PAKISTAN.

Remarks : Though common species for plain region, its occurrence in the region under report is not very common.

25. *Puntius ticto* (Hamilton-Buchanan)

1822. *Cyprinus ticto* Hamilton-Buchanan, *Fishes of Ganges* : 314, 398, pl. 8, fig. 87 (Type locality : south-eastern part of Bengal).

Collection localities : 5 exs. (19 mm – 25 mm TL, Regd. No. V/F/598), Saipung WLS, Kopili R., 11.12.1998; 1 ex. (42 mm TL, Regd. No. V/F/1464), Narpuh R.F. BL-II, R. Malidhar, 01.10.2002; 3 exs. (39 mm-42 mm TL, Regd. No. V/F/1474), Narpuh R.F. BL-II, R. Malidhar, 01.10.2002; 1 ex. (41 mm TL, Regd. No. V/F/1562), Narpuh R.F. BL-I, R. Prang, 10.01.2003.

Distribution within N.E. India : Meghalaya (East and West Khasi hills, Ri-Bhoi, East, West and South Garo hills, Jaintia hills), Assam, Arunachal Pradesh, Mizoram, Nagaland, Manipur, Tripura.

Elsewhere : Throughout India; BANGLADESH; MYANMAR; NEPAL; PAKISTAN; SRI LANKA; THAILAND.

Remarks : Commonly occurring species.

+26. *Labeo boga* (Hamilton-Buchanan)

1822. *Cyprinus boga* Hamilton-Buchanan, *Fishes of Ganges* : 286, 386, pl. 28, fig. 80 (Type locality : River Brahmaputra)..

Collection locality : 2 exs. (67 mm – 70 mm TL, Regd. No. V/F/508), Narpuh R.F. BL-II, Malidhar R., 12.09.1998.

Distribution within N.E. India : Meghalaya (East and South Garo hills), Assam, Arunachal Pradesh, Manipur, Tripura.

Elsewhere : INDIA : W. Bengal, N. Bengal, Bihar, Uttar Pradesh, Orissa, Punjab, Deccan; BANGLADESH; MYANMAR; NEPAL; PAKISTAN.

Remarks : Reported for the first time from J. Hills district.

27. *Labeo calbasu* (Hamilton-Buchanan)

1822. *Cyprinus calbasu* Hamilton-Buchanan, *Fishes of Ganges* : 297, 387, pl. 2, fig. 33 (Type locality : rivers & ponds of Bengal in the Western Provinces).

Collection localities : 1 ex. (87 mm TL, Regd. No. V/F/506), Narpuh R.F. BL-II, Malidhar R., 12.09.1998; 1 ex. (148 mm TL, Regd. No. V/F/527), Narpuh R.F. BL-II, Lukha R., 13.09.1998.

Distribution within N.E. India : Meghalaya (West and South Garo hills, Jaintia hills), Assam, Arunachal Pradesh, Mizoram, Manipur, Tripura.

Elsewhere : Throughout India; BANGLADESH; MYANMAR; NEPAL; PAKISTAN; S. CHINA; THAILAND.

Remarks : Not very commonly occurring in the region under report.

28. *Labeo pangusia* (Hamilton-Buchanan)

1822. *Cyprinus pangusia* Hamilton-Buchanan, *Fishes of Ganges* : 285, 386 (Type locality : Kosi river, Uttar Pradesh).

Collection localities : 2 exs. (67 mm – 88 mm TL, Regd. No. V/F/507), Narpuh R.F. BL-II, Malidhar R., 12.09.1998.

Distribution within N.E. India : Meghalaya (East Khasi hills, East and South Garo hills, Jaintia hills) , Assam, Arunachal Pradesh, Mizoram, Manipur, Tripura.

Elsewhere : INDIA : Ganges river system, Deccan; BANGLADESH; PAKISTAN.

Remarks : Not very commonly occurring in the region under report.

+29. *Labeo rohita* (Hamilton-Buchanan)

1822. *Cyprinus rohita* Hamilton-Buchanan, *Fishes of Ganges* : 301, 388, pl. 36, fig. 85 (Type locality : Freshwater rivers of Gangetic provinces).

Collection localities : 1 ex. (66 mm TL, Regd. No. V/F/522), Narpuh R.F. BL-II, Lukha R., 13.09.1998; 1 ex. (66 mm TL, Regd. No. V/F/530) Narpuh R.F. BL-II, Lukha R., 13.09.1998.

Distribution within N.E. India : Meghalaya (South Garo hills), Assam, Tripura.

Elsewhere : Throughout India; BANGLADESH; MYANMAR; TERAJ REGION OF NEPAL; PAKISTAN.

Remarks : Reported for the first time from Jaintia Hills district.

30. *Crossocheilus latius latius* (Hamilton-Buchanan)

1822. *Cyprinus latius* Hamilton-Buchanan, *Fishes of Ganges* : 345, 393 (Type locality : Tista river at base of Darjeeling Himalayas).

Collection localities : 4 exs. (44 mm – 56 mm TL, Regd. No. V/F/509), Narpuh R.F. BL-II, Malidhar R., 12.09.1998; 3 exs. (59 mm – 64 mm TL, Regd. No. V/F/529), Narpuh R.F., BL-II, Lukha R., 13.09.1998.

Distribution within N.E. India : Meghalaya (West and South Garo hills, Jaintia hills), Assam, Arunachal Pradesh, Mizoram, Nagaland, Manipur, Tripura.

Elsewhere : INDIA : W. Bengal, Bihar, Uttar Pradesh, Gangetic Watershed of Himalayas, Orissa, Karnataka, Bombay, W. Ghats, Kaimur hills; BANGLADESH; MYANMAR; NEPAL; PAKISTAN.

Remarks : Not very commonly occurring species in the region under report.

*31. *Garra annandalei* Hora

1921. *Garra annandalei* Hora, *Rec. Indian Mus.*, 22(5) : 657 (Type locality : Mahananda river, below Darjeeling).

Collection locality : 2 exs. (40 mm – 43 mm TL, Regd. No. V/9385), Narpuh R.F. BL-II, Umkiang stream, 21.04.1990.

Distribution within N.E. India : Meghalaya (Ri-Bhoi, Jaintia hills) , Assam, Arunachal Pradesh, Mizoram, Manipur.

Elsewhere : INDIA : N. Bengal, Bihar, Darjeeling Himalayas; BANGLADESH; EASTERN NEPAL.

Remarks : Not commonly occurring species in the region under report.

32. *Garra nasuta* (McClelland)

1839. *Platycara nasuta* McClelland, *J. Asiat. Soc. Bengal*, 7 (2) : 947, pl.55, figs. 2, 2a, 2b (Type locality : Khasi Hills, Meghalaya).

Collection locality : 1 ex. (135 mm TL, Regd. No. V/F/1680), Narpuh R.F., BL-I, Ampasen, 07.03.2003.

Distribution within N.E. India : Meghalaya (Ri-Bhoi, East, West and South Garo hills), Assam, Arunachal Pradesh, Manipur, Mizoram.

Elsewhere : INDIA (as above); INDO-CHINA; MYANMAR; SOUTH CHINA; VIETNAM.

Remarks : Rarely occurring species in the region under report.

Family PSILORHYNCHIDAE

*+33. *Psilorhynchoides homaloptera* (Hora and Mukherjee)

1935. *Psilorhynchus homaloptera* Hora and Mukherjee (*partim.*), *Rec. Indian Mus.*, 37 (3) : 391, pl. 7, figs. 1-6 (Type locality : Emilomi, Naga Hills, Nagaland).

Collection locality : 1 ex. (58 mm TL, Regd. No. V/9382), Narpuh R.F. BL-II, Umkiang stream, 21.04.1990.

Distribution within N.E. India : Meghalaya (East and West Khasi hills, Ri-Bhoi, East and West Garo hills), Assam, Arunachal Pradesh, Nagaland, Manipur.

Elsewhere : INDIA : N.E. Bengal; MYANMAR; NEPAL.

Remarks : Reported for the first time from Jaintia Hills district. Rarely occurring species in the region under report. It's status is vulnerable.

Family BALITORIDAE

34. *Acanthocobitis botia* (Hamilton-Buchanan)

1822. *Cobitis botia* Hamilton-Buchanan, *Fishes of Ganges* : 350, 394 (Type locality : rivers of north eastern Bengal).

Collection localities : 2 exs. (31 mm – 33 mm TL, Regd. No. V/3960), Narpuh R.F., BL-II; Umkiang stream, 11.09.1983; 2 exs. (29 mm – 34 mm TL, Regd. No. V/F/510), Narpuh R.F. BL-II, Malidhar R., 12.09.1998; 1 ex. (47 mm TL, Regd. No. V/F/1576), Narpuh R.F. BL-I, R. Prang, 10.01.2003; 2 exs. (47 mm-50 mm TL, Regd. No. V/F/1581), Narpuh R.F. BL-I, Khar-kara, 11.01.2003; 3 exs. (40 mm-63 mm TL, Regd. No. V/F/1586), Narpuh R.F. BL-I, R. Prang, 09.01.2003; 1 ex. (56 mm TL, Regd. No. V/F/1664), Narpuh R.F. BL-I, Ampasen, 07.03.2003; 1 ex. (40 mm TL, Regd. No. V/F/1671), Narpuh R.F. BL-I, Ampasen, 07.03.2003.

Distribution within N.E. India : Meghalaya (East Khasi hills, West and South Garo hills, Jaintia hills), Assam, Arunachal Pradesh, Nagaland, Manipur, Tripura.

Elsewhere : Throughout India except Malabar coast & south of R. Krishna; BANGLADESH; MYANMAR; NEPAL; PAKISTAN; SRI LANKA.

Remarks : Not very common like other parts of Meghalaya.

***35. *Schistura beavani* Gunther**

1868. *Nemacheilus beavani* Gunther, *Cat. Fishes Br. Mus.*, 7 : 350 (Type locality : Kossye river, Uttar Pradesh).

Collection locality : 1 ex. (30 mm TL, Regd. No. V/9386), Narpuh R.F. BL-II, Umkiang R., 21.04.1990.

Distribution within N.E. India : Meghalaya (J. hills), Assam, Arunachal Pradesh.

Elsewhere : INDIA : Himalayas, N. Bengal, Uttar Pradesh; NEPAL.

Remarks : Not common in occurrence.

36. *Schistura savona* (Hamilton-Buchanan)

1822. *Cobitis savona* Hamilton-Buchanan, *Fishes of Ganges* : 357, 394 (Type locality : Kosi river at Nathpur, Uttar Pradesh).

Collection localities : 2exs. (21 mm – 22 mm TL, Regd. No. V/3961), Narpuh R.F. BL-II, Umkiang stream, 11.09.1983; 1 ex. (28 mm TL, Regd. No. V/F/1565), Narpuh R.F. BL-I, R. Prang, 10.01.2003.

Distribution within N.E. India : Meghalaya (East and West Khasi hills, Ri-Bhoi, Jaintia hills), Assam, Arunachal Pradesh, Tripura.

Elsewhere : INDIA : Widely distributed in Eastern sub-Himalayan region, N. Bengal; BANGLADESH; NEPAL.

Remarks : Not common in occurrence.

37. *Schistura sikmaiensis* (Hora)

1921. *Nemacheilus sikmaiensis* Hora, *Rec. Indian Mus.*, 22 (3) : 201, pl. 9, fig. 4 and pl. 10, figs. 1, 1a (Type locality : Sikmai stream near Patel, Manipur).

Collection locality : 1 ex. (55 mm TL, Regd. No. V/F/710), Saipung WLS, 20.02.1999.

Distribution within N.E. India : Meghalaya (Ri-Bhoi, South Garo hills, Jaintia hills), Assam, Arunachal Pradesh, Nagaland, Manipur.

Elsewhere : MYANMAR.

Remarks : Not very commonly occurring in the region under report. It's status at National level is endangered.

Family COBITIDAE

38. *Botia dario* (Hamilton-Buchanan)

1822. *Cobitis dario* Hamilton-Buchanan, *Fishes of Ganges* : 354, 394, pl. 29, fig. 95 (Type locality : northern rivers of Bengal).

Collection localities : 1 ex. (57 mm TL, Regd. No. V/F/499), Narpuh R.F., Dona R., 12.09.1998; 13 exs. (39 mm – 44 mm TL, Regd. No. V/F/511), Narpuh R.F., Malidhar R., 12.09.1998.

Distribution within N.E. India : Meghalaya (East Khasi hills, East, West and South Garo hills, Jaintia hills), Assam, Arunachal Pradesh, Mizoram, Nagaland, Manipur, Tripura.

Elsewhere : INDIA : N. Bengal, W. Bengal, Bihar, Utar Pradesh, Punjab, Rajmahal hills; BANGLADESH; PAKISTAN.

Remarks : Commonly occurring in rivers and slow moving streams.

*39. *Somileptes gongota* (Hamilton-Buchanan)

1822. *Cobitis gongota* Hamilton-Buchanan *Fishes of Ganges* : 351, 394 (Type locality : rivers of N. Bengal towards Himalaya).

Collection locality : 2 exs. (120 mm – 130 mm TL, Regd. No. V/3935), Narpuh R.F., 05.03.1983.

Distribution within N.E. India : Meghalaya (East Khasi hills, East and West Garo hills, Jaintia hills), Assam, Arunachal Pradesh, Tripura.

Elsewhere : INDIA : N. Bengal, Uttar Pradesh; BANGLADESH.

Remarks : Not common in occurrence in the region under report.

+40. *Lepidocephalus berdmorei* (Blyth)

1861. *Acanthopsis berdmorei* Blyth, *J. Asiat. Soc. Bengal*, 29 : 163 (Type locality : Tenasserim Province, Burma).

Collection localities : 3 exs. (83 mm – 87 mm TL, Regd. No. V/F/762), Narpuh R.F. BL-II, Lubha R., 16.05.1999; 9 exs. (41 mm-50 mm TL, Regd. No. V/F/1673), Narpuh R.F. BL-I, Ampasen; 4 exs. (48 mm-63 mm TL, Regd. No. V/F/1684), Narpuh R.F. BL-I, Umblei, 08.03.2003; 9 exs. (41 mm-65 mm TL, Regd. No. V/F/1694), Narpuh R.F. BL-I, Amsing, 04.03.2003; 42 exs. (37 mm-58 mm TL, Regd. No. V/F/1696), Narpuh R.F. BL-

I, Amsing, 04.03.2003; 4 exs. (43 mm-75 mm TL, Regd. No. V/F/1701), Narpuh R.F. BL-I, Kanjalat, 05.03.2003; 8 exs. (44 mm-60 mm TL, Regd. No. V/F/1708), Narpuh R.F. BL-I, Rymplung, 06.03.2003; 1 ex. (45 mm TL, Regd. No. V/F/1718), Narpuh R.F. BL-I, Kharpyrtap, 06.03.2003.

Distribution within N.E. India : Meghalaya (East Khasi hills, Ri-Bhoi) , Arunachal Pradesh, Nagaland, Manipur, Tripura.

Elsewhere : MYANMAR.

Remarks : Reported for the first time from J. hills district. Not very commonly occurring species. It's status is endangered.

41. *Lepidocephalus guntea* (Hamilton-Buchanan)

1822. *Cobitis guntea* Hamilton-Buchanan, *Fishes of Ganges* : 353, 394 (Type locality : ponds and freshwaters of Bengal).

Collection localities : 1 ex. (67 mm TL, Regd. No. V/F/500), Narpuh R.F., Dona R., 12.09.1998; 1 ex. (80 mm TL, Regd. No. V/F/524), Narpuh R.F., Lukha R., 13.09.1998; 2 exs. (63 mm – 68 mm TL, Regd. No. V/F/534), Narpuh R.F., Umkiang stream, 14.09.2000; 10 exs. (48 mm – 68 mm TL, Regd. No. V/3959), Narpuh R.F., Umkiang stream, 11.09.1983; 2 exs. (52 mm-58 mm TL, Regd. No. V/F/1452), Narpuh R.F. BL-II, Sonapur, 30.09.2002; 2 exs. (43 mm-61 mm TL, Regd. No. V/F/1460), Narpuh R.F. BL-II, Wahkoh, 02.10.2002; 3 exs. (54 mm-60 mm TL, Regd. No. V/F/1462), Narpuh R.F. BL-II, R. Malidhar, 01.10.2002; 22 exs. (38 mm-63 mm TL, Regd. No. V/F/1473), Narpuh R.F. BL-II, R. Malidhar, 01.10.2002; 2 exs. (67 mm-73 mm TL, Regd. No. V/F/1480), Narpuh R.F. BL-II, R. Dona, 29.09.2002; 11 exs. (57 mm-78 mm TL, Regd. No. V/F/1568), Narpuh R.F. BL-I, Kharkara, 12.01.2003; 5 exs. (60 mm-76 mm TL, Regd. No. V/F/1575), Narpuh R.F. BL-I, R. Prang, 10.03.2003; 20 exs. (32 mm-80 mm TL, Regd. No. V/F/1579), Narpuh R.F. BL-I, Kharkara, 11.01.2003; 21 exs. (55 mm-80 mm TL, Regd. No. V/F/1585), Narpuh R.F. BL-I, R. Prang, 09.01.2003; 4 exs. (50 mm-62 mm TL, Regd. No. V/F/1652), Narpuh R.F. BL-I, R. Laichiki, 04.03.2003; 4 exs. (63 mm -77 mm TL, Regd. No. V/F/1656), Narpuh R.F. BL-I, Passadwar, 06.03.2003; 4 exs. (48 mm-69 mm TL, Regd. No. V/F/1659), Narpuh R.F. BL-I, Kharkara, 06.03.2003; 3 exs. (60 mm-78 mm TL, Regd. No. V/F/1665), Narpuh R.F. BL-I, Ampasen, 07.03.2003; 19 exs. (70 mm-80 mm TL, Regd. No. V/F/1672), Narpuh R.F. BL-I, Ampasen, 07.03.03; 8 exs. (68 mm-91 mm TL, Regd. No. V/F/1685), Narpuh R.F. BL-I, Umblei, 08.03.2003; 5 exs. (40 mm-77 mm TL, Regd. No. V/F/1693), Narpuh R.F. BL-I, Amsing, 04.03.2003; 8 exs. (41 mm-73 mm TL, Regd. No. V/F/1695), Narpuh R.F. BL-I, Amsing, 04.03.2003; 7 exs. (42 mm-85 mm TL, Regd. No. V/F/1707), Narpuh R.F. BL-I Rymplung, 06.03.2003; 1 ex. (72 mm TL, Regd. No. V/F/1719), Narpuh R.F. BL-I, Kharpyrtap, 06.03.2003.

Distribution within N.E. India : Meghalaya (East and West Khasi hills, Ri-Bhoi, East and West Garo hills, Jaintia hills), Assam, Arunachal Pradesh, Mizoram, Nagaland, Manipur, Tripura.

Elsewhere : Throughout India except Karnataka, Kerala & South of Krishna; BANGLADESH; NEPAL; PAKISTAN; THAILAND.

Remarks : Commonly occurring species.

***42. *Lepidocephalus menoni* (Pillai & Yazdani)**

1976. *Lepidocephalichthys menoni* Pillai and Yazdani, *J. Zool. Soc. India*, **26** (1-2) : 13 (Type locality : Someswari river at Baghmara, G. Hills, Meghalaya).

Collection localities : 3 exs. (26 mm–32 mm TL, Regd. No. V/3503), Narpuh R.F., 13.09.1983.

Distribution within N.E. India : Meghalaya (South Garo Hills Jaintia hills), Assam, Arunachal Pradesh.

Elsewhere : INDIA : Uttar Pradesh, Doon valley.

Remarks : Not common in occurrence. It's status is vulnerable/critical.

Order	SILURIFORMES
Family	BAGRIDAE

43. *Batasio batasio* (Hamilton-Buchanan)

1822. *Pimelodus batasio* Hamilton-Buchanan, *Fishes of Ganges* : 179, 377 (*nec.* pl. 23, fig. 10) (Type locality : Tista river, North Bengal).

Collection localities : 4 exs. (93 mm – 105 mm TL, Regd. No. V/4017), Narpuh R.F., 13.09.1983; 1 ex. (85 mm TL, Regd. No. V/F/1660), Narpuh R.F. BL-I, Kharkara, 06.03.2003.

Distribution within N.E. India : Meghalaya (East Khasi hills, South Garo hills, Jaintia hills), Assam, Arunachal Pradesh, Mizoram, Tripura.

Elsewhere : INDIA : Teesta river system, E. Himalayas, N. Bengal; BANGLADESH; NEPAL.

Remarks : Not very commonly occurring in the region under report.

***44. *Chandramara chandramara* (Hamilton-Buchanan)**

1822. *Pimelodus chandramara* Hamilton-Buchanan, *Fishes of Ganges* : 152, 365 (Type locality : Atrai river, North Bengal).

Collection locality : 2 exs. (48 mm–58 mm TL, Regd. No. V/3940), Narpuh R.F., 19.01.1984.

Distribution within N.E. India : Meghalaya (Jaintia hills), Assam, Arunachal Pradesh.

Elsewhere : INDIA : N. Bengal, Uttar Pradesh; BANGLADESH.

Remarks : Not common in occurrence.

+ 45. *Mystus bleekeri* (Day)

1846. *Bagrus keletius* (nec. Valenciennes) Bleeker, *Nat. Geneesk. Arch. Ned. Indie*, 3 (2) : 135 (Type locality : Bengal) (name occupied by Valenciennes, 1839).

1877. *Macrones bleekeri* Day, *Fishes of India* : 451, pl.101, fig.1 (Replacement name for *Bagrus keletius* Bleeker, 1846).

Collection localities : 1 ex. (85 mm TL, Regd. No. V/F/1676), Narpuh RF, BL-I, Ampasen, 07.03.2003; 1 ex. (97 mm TL, Regd.No. V/F/171), Narpuh RF, BL-I, Rymplung, 06.03.2003.

Distribution within N.E. India : Meghalaya (East Khasi hills, West and South Garo hills), Assam, Arunachal Pradesh, Manipur, Nagaland, Tripura.

Elsewhere : INDIA (Darjeeling, West Bengal, North India, Mahanadi headwaters, Baroda); BANGLADESH; MYANMAR; MALAYA; NEPAL; PAKISTAN; SUMATRA.

Remarks : Reported for the first time from Jaintia hills district. Not very common in this area. It's status is vulnerable.

+46. *Mystus vittatus* (Bloch)

1797. *Silurus vittatus* Bloch, *Ichthyol. Hist. Nat.*, 11 : 40, pl.371, fig.2 (Type locality : Tranquebar, Tamil Nadu).

Collection localities : 2 exs. (41 mm – 42 mm TL, Regd. No. V/F/512), Narpuh R.F., Malidhar R., 12.09.1998 ; 1 ex. (75 mm TL, Regd. No. V/F/1677), Narpuh R.F. BL-I, Ampasen 07.03.2003; 1 ex. (80 mm TL, Regd. No. V/F/1714), Narpuh R.F. BL-I, Pyrhuna, 05.03.2003.

Distribution within N.E. India : Meghalaya (Ri-Bhoi, West and South Garo hills), Assam, Arunachal Pradesh, Tripura.

Elsewhere : Throughout India; BANGLADESH; MYANMAR; MALAYA; NEPAL; PAKISTAN; SRI LANKA; THAILAND.

Remarks : Reported for the first time from Jaintia hills. Not very commonly occurring in the region under report, though it is very common in plain region. It's status is vulnerable at National level.

Family AMBLYCIPITIDAE

47. *Amblyceps mangois* (Hamilton-Buchanan)

1822. *Pimelodus mangois* Hamilton-Buchanan, *Fishes of Ganges* : 199, 379 (Type locality : Northern Bihar).

Collection localities : 1 ex. (30 mm TL, Regd. No. V/F/513), Narpuh R.F., Malidhar R., 12.09.1998; 2exs. (45 mm – 50 mm TL, Regd. No. V/F/779), Narpuh R.F. BL-II, Umkiang stream, 13.05.1999; 3 exs. (31 mm-40 mm TL, Regd. No. V/F/1467), Narpuh R.F. BL-II, R. Malidhar, 01.10.2002; 3 exs. (43 mm-46 mm TL, Regd. No. V/F/1477), Narpuh R.F. BL-II, R. Malidhar, 01.10.2002; 1 ex. (35 mm TL, Regd. No. V/F/1570), Narpuh R.F. BL-I, Kharkara, 12.01.2003; 1 ex. (40 mm TL, Regd. No. V/F/1577), Narpuh R.F. BL-I, R. Prang, 10.01.2003; 1 ex. (72 mm TL, Regd. No. V/F/1661), Narpuh R.F. BL-I, Kharkara , 06.03.2003; 2 exs. (44 mm-61 mm TL, Regd. No. V/F/1686), Narpuh R.F. BL-I, Umblei, 08.03.2003; 6 exs. (47 mm -63 mm TL, Regd. No. V/F/1690), Narpuh R.F. BL-I, Amsing, 04.03.2003; 4 exs. (45 mm-57 mm TL, Regd. No. V/F/1697), Narpuh R.F. BL-I, Amsing, 04.03.2003.

Distribution within N.E. India : Meghalaya (East, West and South Garo hills, Jaintia hills), Assam, Arunachal Pradesh, Nagaland, Manipur, Tripura.

Elsewhere : INDIA : All along the base of the Himalayas & Krishna river system; BANGLADESH; MYANMAR; LAOS; NEPAL; PAKISTAN; THAILAND.

Remarks : Not very commonly occurring in the region under report.

Family SISORIDAE

*48. *Gagata cenia* (Hamilton-Buchanan)

1822. *Pimelodus cenia* Hamilton-Buchanan, *Fishes of Ganges* : 174, 376, pl.31, fig.57 (Type locality : rivers of North Bengal).

Collection locality : 3exs. (73 mm – 90 mm TL, Regd. No. V/4018), Narpuh R.F., 13.09.1983.

Distribution within N.E. India : Meghalaya (East Khasi hills, West and South Garo hills, Jaintia hills), Assam, Arunachal Pradesh, Mizoram, Manipur, Tripura.

Elsewhere : INDIA : W.Bengal, Orissa, Bihar, Uttar Pradesh, Delhi, Punjab; BANGLADESH; MYANMAR; NEPAL; PAKISTAN.

Remarks : Not very commonly occurring in the region under report.

***+49. *Gagata sexualis* Tilak**

1970. *Gagata sexualis* Tilak, *Zool. Med.*, 44 (14) : 207, figs. 1-6 (Type locality : North Koel river at Daltonganj, Chotanagpur, Bihar).

Collection locality : 1 ex. (50 mm TL, Regd. No. V/8170), Narpuh R.F., 03.01.1984.

Distribution within N.E. India : Assam.

Elsewhere : INDIA : Yamuna river at Delhi, Ganga river system, Bihar.

Remarks : Reported for the first time from J. Hills district as well as Meghalaya. Rarely occurring in the region under report.

+ 50. *Laguvia shawi* Hora

1921. *Laguvia shawi* Hora, *Rec. Indian Mus.* 22 (5) : 740, pl. 29, fig. 2, (Type locality : Mahananda and Sivoke rivers, Darjeeling Himalayas).

Collection locality : 1 ex. (30 mm TL, Regd. No. V/F/1478), Narpuh R.F. BL-II, Malidhar' R., 01.10.2002.

Distribution within N.E. India : Meghalaya (South Garo hills), Assam.

Elsewhere : INDIA (North India, Darjeeling Himalayas); BANGLADESH.

Remarks : Reported for the first time from Jaintia Hills district. Rarely occurring species. It's status is endangered.

Family HETEROPNEUSTIDAE

51. *Heteropneustes fossilis* (Bloch)

1784. *Siluris fossilis* Bloch, *Naturgesch. Aust. Fische*, 8 : 46, pl.370, fig.2 (Type locality : Tranquebar, Tamil Nadu).

Collectioin localities : 1ex. (131 mm TL, Regd. No. V/3924), Narpuh R.F., 05.03.1983; 2 exs. (51 mm-157 mm TL, Regd. No. V/F/1456), Narpuh R.F. BL-II, Wahkoh, 02.10.2002.

Distribution within N.E. India : Meghalaya (East Khasi hills, Ri-Bhoi, East and West Garo hills, Jaintia hills)., Assam, Arunachal Pradesh, Nagaland, Tripura.

Elsewhere : Throughout India; BANGLADESH; MYANMAR; INDO-CHINA; LAOS; NEPAL; PAKISTAN; SRI LANKA; THAILAND.

Remarks : Though the species is very commonly occurring in Meghalaya, but its occurrence in the region under report is not very common. It's status is vulnerable at National level.

Family CHACIDAE

***52. *Chaca chaca* (Hamilton-Buchanan)**

1822. *Platystacus chaca* Hamilton-Buchanan, *Fishes of Ganges* : 140, 374, pl. 28, fig. 43 (Type locality : rivers and ponds of north eastern parts of Bengal).

Collection localities : 1 ex. (169 mm TL, Regd. No. V/3904), Narpuh R.F., 23.01.1984.

Distribution within N.E. India : Meghalaya (Jaintia hills), Assam, Tripura.

Elsewhere : INDIA : Ganga & Irrawady river system, some freshwater of Bombay; BANGLADESH; MYANMAR; BORNEO; MALAYA; NEPAL; SUMATRA.

Remarks : Rarely occurring species.

Family OLYRIDAE

53. *Olyra longicaudata* McClelland

1842. *Olyra longicaudata* McClelland, *Calcutta Jour. Nat. Hist.*, 2 : 588, pl. 21, fig. 1 (Type locality : Khasi hills, Meghalaya).

Collection localities : 1 ex. (73 mm TL, Regd. No. V/F/501), Narpuh R.F., Dona R., 12.09.1998; 2 exs. (74 mm – 91 mm TL, Regd. No. V/8007), Narpuh R.F., 13.09.1983; 1 ex. (100 mm TL, Regd. No. V/F/1583), Narpuh R.F. BL-I, Kharkara, 11.01.2003; 1 ex. (96 mm TL, Regd. No. V/F/1662), Narpuh R.F. BL-I, Kharkara, 06.03.2003, 7 exs. (48 mm-93 mm TL, Regd. No. V/F/1678), Narpuh R.F. BL-I, Ampasen, 07.03.2003; 1 ex. (85 mm TL, Regd. No. V/F/1687), Narpuh R.F. BL-I, Umblei, 08.03.2003; 7 exs. (67 mm-114 mm TL, Regd. No. V/F/1689), Narpuh R.F. BL-I, Amsing, 04.03.2003; 1 ex. (75 mm TL, Regd. No. V/F/1698), Narpuh R.F. BL-I, Amsing, 04.03.2003; 3 exs. (62 mm -71 mm TL, Regd. No. V/F/1709), Narpuh R.F. BL- I, Rymplung, 06.03.2003.

Distribution within N.E. India : Meghalaya (East Khasi hills, East Garo hills, Jaintia hills), Assam, Arunachal Pradesh, Nagaland, Tripura.

Elsewhere : INDIA : Darjeeling Himalayas; MYANMAR.

Remarks : Commonly occurring species in this region.

Order BELONIFORMES

Family BELONIDAE

54. *Xenentodon cancila* (Hamilton-Buchanan)

1822. *Esox cancila* Hamilton-Buchanan, *Fishes of Ganges* : 213, 380, pl. 27, fig. 70 (Type locality : Gangetic provinces).

Collection locality 1 ex. (204 mm TL, Regd. No. V/F/525), Narpuh R.F., Lukha R., 13.09.1998.

Distribution within N.E. India : Meghalaya (East and West Garo hills, Jaintia hills), Assam, Arunachal Pradesh, Mizoram, Manipur, Tripura.

Elsewhere : Throughout India; BANGLADESH; BORNEO; MYANMAR; MALAYA; NEPAL; PAKISTAN; SRI LANKA; SUMATRA; THAILAND.

Remarks : Not very commonly occurring in the region under report.

Order CYPRINODONTIFORMES
Family APLOCHEILIDAE

55. *Aplocheilus panchax* (Hamilton-Buchanan)

1822. *Esox panchax* Hamilton-Buchanan, *Fishes of Ganges* : 211, 380, Pl.3, Fig. 69 (type locality : Bengal).

Collection localities : 1 ex. (38 mm TL, Regd. No. V/F/514), Narpuh R.F., Malidhar R., 12.09.1998; 5exs. (20 mm – 26 mm TL, Regd. No. V/F/770), Narpuh R.F., Umkiang stream, 14.05.1999.

Distribution within N.E. India : Meghalaya (East Khasi hills, Jaintia hills), Assam, Tripura.

Elsewhere : INDIA : W. Bengal, Bihar, Uttar Pradesh, Orissa, E. Punjab, Madhya Pradesh, Andaman; BANGLADESH; MYANMAR; THAILAND TO MALAY ARCHIPELAGO; PAKISTAN; SIAM; SRI LANKA.

Remarks : Not very commonly occurring in the region under report.

Order SYNBRANCHIFORMES
Family SYNBRANCHIDAE

***56. *Monopterus cuchia* (Hamilton-Buchanan)**

1822. *Unibranchapertura cuchia* Hamilton-Buchanan, *Fishes of Ganges* : 16-363, pl.6, fig.4 (Type locality : Rivers and ponds of south-east parts of Bengal).

Collection localities : 1 ex. (440mm TL, Regd.No. V/3142), Narpuh R.F., 06.08.1981.

Distribution within N.E. India : Meghalaya (East Khasi hills, Jaintia hills), Assam, Arunachal Pradesh, Nagaland, Manipur, Tripura.

Elsewhere : INDIA : North and North Eastern part of India, Orissa; BANGLADESH; MYANMAR; CHUSAN; NEPAL; PAKISTAN.

Remarks : Not very commonly occurring in the region under report.

Family MASTACEMBELIDAE

***57. *Macrognaathus aral* (Bloch and Schneider)**

1801. *Rhynchobdella aral* Bloch and Schneider, *Syst. Ichth.*, 479, pl.89 (Type locality : Tranqueber).

Collection locality : 1 ex. (121 mm TL, Regd. No. V/3568), Narpuh R.F., 14.09.1983.

Distribution within N.E. India : Meghalaya (West Garo hills, Jaintia hills), Assam, Arunachal Pradesh, Nagaland, Tripura.

Elsewhere : Throughout India; BANGLADESH; BORNEO; MYANMAR; INDO-CHINA; CHINA; JAVA; MALAYA PENINSULA; MOLUCCAS; NEPAL; PAKISTAN; SIAM; SRI LANKA; SUMATRA; THAILAND; VIETNAM.

Remarks : Not very commonly occurring in the region under report.

***58. *Macrognaathus pancalus* (Hamilton-Buchanan)**

1822. *Macrognaathus pancalus* Hamilton-Buchanan, *Fishes of Ganges* : 30, 364, pl. 22, fig. 7 (Type locality : tanks of Gangetic provinces).

Collection locality : 1 ex. (78 mm TL, Regd. No. V/3512), Narpuh R.F., 13.09.1983.

Distribution within N.E. India : Meghalaya (East Khasi hills, Ri-Bhoi, West Garo hills, Jaintia hills), Assam, Arunachal Pradesh, Manipur, Tripura.

Elsewhere : Throughout India; BANGLADESH; PAKISTAN.

Remarks : Not very commonly occurring in the region under report.

59. *Mastacembelus armatus* (Lacepede)

1800. *Macrognaathus armatus* Lacepede, *Hist. Nat. Poiss.* 2 : 286 (Type locality: not mentioned).

Collection localities : 2 exs. (123 mm - 125 mm TL, Regd. No. V/F/1566), Narpuh RF, BL-I, R. Prang, 10.01.2003; 1ex. (117 mm TL, Regd. No. V/F/1591), Narpuh RF, BL-I, R. Prang, 09.01.2003.

Distribution within N.E. India : Meghalaya (East Khasi hills, East, West and South Garo hills, Jaintia hills), Assam, Arunachal Pradesh, Manipur, Mizoram, Nagaland, Tripura.

Elsewhere : INDIA (Throughout India); BANGLADESH; BALUCHISTAN; CAMBODIA; SOUTH CHINA; HAINAN ISLAND; JAVA; MALAYA; MYANMAR; NEPAL; PAKISTAN; SRI LANKA; SUMATRA; THAILAND; TONKIN.

Remarks : Not very commonly occurring species in this region.

Family CHAUDHURIDAE

+ 60. *Chaudhria (Pillaia) indica* (Yazdani)

1972. *Pillaia indica* Yazdani, *J. Bombay nat. Hist. Soc.*, **69** (1) : 134 (Type locality Sumer, Khasi Hills, Meghalaya).

Collection locality : 1 ex. (53 mm TL, Regd. No. V/F/ 1702), Narpuh RF, BL-I, Amsing, 04.03.2003.

Distribution within N.E. India : Meghalaya (Ri-Bhoi, East and South Garo hills), Assam, Arunachal Pradesh.

Elsewhere : Same as above.

Remarks : Reported for the first time from Jaintia Hills District. It's status is vulnerable.

Order PERCIFORMES

Family CHANDIDAE

61. *Chanda nama* (Hamilton-Buchanan)

1822. *Chanda nama* Hamilton-Buchanan, *Fishes of Ganges* : 109, 371, pl. 39, fig. 37 (Type locality : ponds throughout Bengal).

Collection localities : 1 ex. (31 mm TL, Regd. No. V/F/516), Narpuh R.F., Malidhar R., 12.09.1998; 1ex. (80 mm TL, Regd. No. V/4024), Narpuh R.F., 13.09.1983.

Distribution within N.E. India : Meghalaya (East and West Khasi hills, Ri-Bhoi, West and South Garo hills, Jaintia hills), Assam, Arunachal Pradesh, Manipur, Tripura.

Elsewhere : Throughout India; BANGLADESH; MYANMAR; NEPAL; PAKISTAN.

Remarks : Not commonly occurring in the region under report.

+62. *Parambassis baculis* (Hamilton-Buchanan)

1822. *Chanda baculis* Hamilton-Buchanan, *Fishes of Ganges* : 112, 371, pl. 22, fig. 7 (Type locality : north eastern parts of Bengal).

Collection localities : 1 ex. (48 mm TL, Regd. No. V/F/518), Narpuh R.F., Lukha R., 13.09.1998; 16 exs.(37 mm - 44 mm TL, Regd. No. V/F/1574), Narpuh R.F. BL-I, 08.01.2003.

Distribution within N.E. India : Meghalaya (South Garo hills) , Assam, Arunachal Pradesh, Mizoram, Tripura.

Elsewhere : INDIA : W. Bengal, Orissa, N. India, Kalimpong, Duars, Siliguri, Madhya Pradesh, Bombay, Bihar, Punjab; BANGLADESH; MYANMAR; PAKISTAN; THAILAND.

Remarks : Reported for the first time from J. hills district. Not common in occurrence.

63. *Parambassis ranga* (Hamilton-Buchanan)

1822. *Chanda ranga* Hamilton-Buchanan, *Fishes of Ganges* : 113, 371, pl. 6, fig. 38 (Type locality : freshwaters of all parts of Gangetic provinces).

Collection localities : 4 exs. (59 mm – 70 mm TL, Regd. No. V/F/488), Narpuh R.F., Lubha R., 11.09.1998; 4 exs. (50 mm – 68 mm TL, Regd. No. V/F/494), Narpuh R.F., Lubha R., 11.09.1998; 3 exs. (52 mm – 69 mm TL, Regd. No. V/F/498), Narpuh R.F., Lubha R., 11.09.1998; 2 exs. (41 mm – 47 mm TL, Regd. No. V/F/503), Narpuh R.F., Dona R., 12.09.1998; 2 exs. (46 mm – 52 mm TL, Regd. No. V/F/515), Narpuh R.F., Malidhar R., 12.09.1998; 16 exs. (36 mm – 88 mm TL, Regd. No. V/F/517), Narpuh R.F., Lukha R., 13.09.1998 ; 36 exs. (45 mm-60 mm TL, Regd. No. V/F/1451), Narpuh R.F. BL-II, Sonapur, 30.09.2002; 3 exs. (40 mm-52 mm TL, Regd. No. V/F/1481), Narpuh R.F. BL-II, R. Dona, 29.09.2002; 16 exs. (37 mm-44 mm TL, Regd. No. V/F/1574), Narpuh R.F. BL-I, R. Prang, 10.01.2003; 11 exs. (45 mm-58 mm TL, Regd. No. V/F/1584), Narpuh R.F. BL-I, Kharkara, 11.01.2003; 1 ex. (45 mm TL, Regd. No. V/F/1588), Narpuh R.F. BL-I, R. Prang, 09.01.2003; 3 exs. (52 mm-53 mm TL, Regd. No. V/F/1679), Narpuh R.F. BL-I, Ampasen, 07.03.2003; 1 ex. (60 mm TL, Regd. No. V/F/1712), Narpuh R.F. Rymplung, 06.03.2003.

Distribution within N.E. India : Meghalaya (East Khasi hills, Ri-Bhoi, East, West and South Garo hills, Jaintia hills), Assam, Arunachal Pradesh, Mizoram, Manipur, Tripura.

Elsewhere : Throughout India; BANGLADESH; MYANMAR; MALAYA; NEPAL; PAKISTAN; SIAM; THAILAND.

Remarks : Commonly occurring species.

Family NANDIDAE

64. *Badis badis* (Hamilton-Buchanan)

1822. *Labrus badis* Hamilton-Buchanan, *Fishes of Ganges* : 70, 368, pl. 25, fig. 23 (Type locality : Gangetic provinces).

Collection localities : 3 exs. (28 mm – 41 mm TL, Regd. No. V/F/502), Narpuh R.F., Dona R., 12.09.1998; 1 ex. (37 mm TL, Regd. No. V/F/536), Narpuh R.F., Umkiang stream, 14.09.1998; 7 exs. (39 mm – 67 mm TL, Regd. No. V/F/705), Saipung WLS, 21.02.1999; 1 ex. (20 mm TL, Regd. No. V/F/768), Narpuh R.F., Dona R., 13.05.1999; 2 exs. (23 mm – 25 mm TL, Regd. No. V/F/771), Narpuh R.F., Umkiang stream, 14.5.99; 2 exs. (21 mm – 22 mm TL, Regd. No. V/F/773), Narpuh R.F., Malidhar R., 15.05.1999;

1 ex. (26 mm TL, Regd. No. V/F/776), Narpuh R.F., Malidhar R., 15.5.99; 3 exs. (25 mm - 37 mm TL, Regd. No. V/F/1120), Saipung WLS, 17.12.1999 ; 1 ex. (16 mm TL, Regd. No. V/F/1466), Narpuh R.F. BL-II, R. Malidhar, 01.10.2002; 11 exs. (18 mm - 31 mm TL, Regd. No. V/F/1472), Narpuh R.F. BL-II, 01.10.2002; 1 ex. (62 mm TL, Regd. No. V/F/1482), Narpuh R.F. BL-II, R. Dona, 29.09.2002; 1 ex. (22 mm TL, Regd. No. V/F/1564), Narpuh R.F. BL-I, R. Prang, 10.01.2003; 2 exs. (28 mm - 48mm TL, Regd. No. V/F/1569), Narpuh R.F. BL-I, Kharkara, 12.01.2003; 5 exs. (23 mm - 42 mm TL, Regd. No. V/F/1582), Narpuh R.F. BL-I, Kharkara, 11.01.2003; 4 exs. (36 mm - 42 mm TL, Regd. No. V/F/1587), Narpuh R.F. BL-I, R. Prang, 09.01.2003; 1 ex. (44 mm TL, Regd. No. V/F/1653), Narpuh R.F. BL-I, R. Laichiki, 04.03.2003; 10 exs. (18 mm - 45 mm TL, Regd. No. V/F/1654), Narpuh R.F. BL-I, Passadwar, 06.03.2003; 2 exs. (29 mm - 35 mm TL, Regd. No. V/F/1663), Narpuh R.F. BL-I, Kharkara, 06.03.2003; 6 exs. (37 mm - 66 mm TL, Regd. No. V/F/1666), Narpuh R.F. BL-I, Ampasen, 07.03.2003; 18 exs (30 mm - 66mm TL, Regd. No. V/F/1674), Narpuh R.F. BL-I, Ampasen, 07.03.2003; 56 exs. (17 mm - 47 mm TL, Regd. No. V/F/1688), Narpuh R.F. BL-I, Umblei, 08.03.2003; 2 exs. (42 mm - 66 mm TL, Regd. No. V/F/1691), Narpuh R.F. BL-I, Amsing, 04.03.2003; 3 exs. (27 mm - 40 mm TL, Regd. No. V/F/1700), Narpuh R.F. BL-I, Kanjalat, 05.03.2003; 4 exs. (18 mm - 43 mm TL, Regd. No. V/F/1706), Narpuh R.F. BL-I, Rymplung, 06.03.2003; 3 exs. (30 mm - 46 mm TL, Regd. No. V/F/1717), Narpuh R.F. BL-I, Kharpyrtap , 06.03.2003.

Distribution in N.E. India : Meghalaya (East and West Khasi hills, Ri-Bhoi, East, West and South Garo hills, Jaintia hills), Assam, Arunachal Pradesh, Mizoram, Nagaland, Manipur, Tripura.

Elsewhere : Throughout India; BANGLADESH; MYANMAR; NEPAL; PAKISTAN.

Remarks : Very common in occurrence.

***65. *Nandus nandus* (Hamilton-Buchanan)**

1822. *Coius nandus* Hamilton-Buchanan, *Fishes of Ganges* : 96, 370, pl.30, fig. 32 (Type locality : ponds of Gangetic provinces).

Collection locality : 1 ex. (67 mm TL, Regd. No. V/3508), Narpuh R.F., 13.09.1983.

Distribution within N.E. India : Meghalaya (East Khasi hills, East, West and South Garo hills, Jaintia hills.), Assam, Arunachal Pradesh, Manipur, Tripura.

Elsewhere : Throughout India; BANGLADESH; MYANMAR; MALAYA; NEPAL; PAKISTAN; THAILAND.

Remarks : Not commonly occurring in the region under report.

Family CICHLIDAE

+66. *Oreochromis mossambica* (Peters)

1852. *Chromis (Tilapia) mossambicus* Peters, *Montab. Akad. Wiss., Berlin* : 681 (Type locality : Mozambique).

Collection locality : 1 ex. (17 mm TL, Regd. No. V/F/772), Narpuh R.F., Umkiang stream, 14.05.1999.

Distribution within N.E. India : Meghalaya (West Garo hills), Assam, Manipur, Tripura.

Elsewhere : INDIA : Introduced; PAKISTAN; SRI LANKA; EAST AFRICA.

Remarks : Reported for the first time from J. hills district. Rarely occurring in the region under report.

Family GOBIIDAE

67. *Glossogobius giuris giuris* (Hamilton-Buchanan)

1822. *Gobius giuris* Hamilton-Buchanan, *Fishes of Ganges* : 51, pl.33, fig.15 (Type locality : Gangetic provinces).

Collection localities : 1 ex. (83 mm TL, Regd. No. V/3943), Narpuh R.F., 19.01.1984; 1 ex. (111 mm TL, Regd. No. V/F/1590), Narpuh R.F. BL-I, R. Prang, 09.01.2003.

Distribution within N.E. India : Meghalaya (East Khasi hills, Ri-Bhoi, West and South Garo hills, Jaintia hills), Assam, Arunachal Pradesh, Mizoram, Manipur, Tripura.

Elsewhere : Throughout India including Andamans; BANGLADESH; MYANMAR; CHINA; MALAYA PENINSULA; NEPAL; PAKISTAN; PHILLIPINES; SRI LANKA; THAILAND; E.COAST OF AFRICA TO JAPAN; AUSTRALIA; INDO-AUSTRALIAN ARCHIPELAGO; SOUTH PACIFIC ISLANDS.

Remarks : Rarely occurring in the region under report.

Family ANABANTIDAE

+68. *Anabas testudineus* (Bloch)

1795. *Anthias testudineus* Bloch, *Naturges, Ausland. Fische*, (6) : 121, pl.322 (Type locality : ? Java).

Collection localities : 1 ex. (142 mm TL, Regd. No. V/ F/ 761), Narpuh R.F. BL-II, Umkiang stream, 14.05.1999; 1 ex. (90 mm TL, Regd. No. V/F/1455), Narpuh R.F. BL-II, Wahkoh, 02.10.2002.

Distribution in N.E. India : Meghalaya (East Khasi hills, Ri-Bhoi, East and West Garo hills), Assam, Arunachal Pradesh, Manipur, Tripura.

Elsewhere : Throughout India; BANGLADESH; MYANMAR; CAMBODIA; INDO-CHINA; CHINA; MALAYA; MALAYA ARCHIPELAGO; NEPAL; PAKISTAN; PHILLIPINES; POLYNESIA; SINGAPORE; SRI LANKA; THAILAND.

Remarks : Reported for the first time from J. hills district. Though commonly occurring in N.E. India, it's status is vulnerable at National level.

Family BELONTIIDAE

69. *Colisa fasciatus* (Schneider)

1801. *Trichogaster fasciatus* Schneider, *Syst. Ichthy.* 164, pl.36 (Type locality : Tranquebar)

Collection localities : 1 ex. (93 mm TL, Regd. No. V/3572), Narpuh R.F., 13.09.1983; 1 ex. (42 mm TL, Regd. No. V/4023), Narpuh R.F., 13.09.1983; 1 ex. (74 mm TL, Regd. No. V/F/1461), Narpuh R.F. BL-II, Wahkoh, 02.10.2002; 1 ex. (65 mm TL, Regd. No. V/F/1469), Narpuh R.F. BL-II, R. Malidhar, 01.10.2002.

Distribution in N.E. India : Meghalaya (East and West Khasi hills, Ri-Bhoi, East, West and South Garo hills, Jaintia hills), Assam, Arunachal Pradesh, Manipur, Tripura.

Elsewhere : INDIA : N. India, Estuaries of Ganga, Coromondol coast, R. Krishna; BANGLADESH; MYANMAR; NEPAL; PAKISTAN.

Remarks : Though it is a common species, but its occurrence in the region under report is not very common.

*70. *Colisa sota* (Hamilton-Buchanan)

1822. *Trichopodus sota* Hamilton-Buchanan, *Fishes of Ganges* : 120, 373 (Type locality : Ganges river).

Collection localities : 5 exs. (44 mm – 49 mm TL, Regd. No. V/3598) Narpuh R.F., 23.01.1984.

Distribution in N.E. India : Meghalaya (Ri-Bhoi, West Garo hills, Jaintia hills), Assam, Manipur, Nagaland, Tripura.

Elsewhere : INDIA : Gangetic provinces; BANGLADESH.

Remarks : Not very commonly occurring in the region under report.

Family CHANNIDAE

71. *Channa orientalis* Schneider

1801. *Channa orientalis* Schneider, *Syst. Ichtyol*, 496, pl. 90, fig.2 (Type locality : India).

Collection localities : 5 exs. (37 mm – 54 mm TL, Regd. No. V/F/706), Saipung WLS, 21.02.1999; 2exs. (39 mm – 63 mm TL, Regd. No. V/F/707), Saipung WLS, 19.02.1999; 3exs. (42 mm – 51 mm TL, Regd. No. V/F/709), Saipung WLS, 20.02.1999; 1 ex. (125 mm TL, Regd. No. V/F/760), Narpuh R.F., Umkiang stream, 14.05.1999; 1 ex. (97 mm TL, Regd. No. V/F/763), Narpuh R.F., Umkiang stream, 16.05.1999; 7exs. (23 mm – 49 mm TL, Regd. No. V/F/767), Narpuh R.F., Dona R., 13.05.1999; 2 exs. (20 mm - 22 mm TL, Regd. No. V/F/777), Narpuh R.F., Malidhar R., 15.05.1999; 2exs. (55 mm – 60 mm TL, Regd. No. V/F/1121), Saipung area, 17.12.1999; 1 ex. (80 mm TL, Regd. No. V/F/1457), Narpuh R.F. BL-II, Wahkoh, 02.10.2002; 1 ex. (63 mm TL, Regd. No. V/F/1468), Narpuh R.F. BL-II, R. Malidhar, 01.10.2002; 2 exs. (48 mm - 60 mm TL, Regd. No. V/F/1571), Narpuh R.F. BL-I, Kynjet, 08.01.2003; 1 ex. (81 mm TL, Regd. No. V/F/1572), Narpuh R.F. BL-I, R. Prang, 10.01.2003; 1 ex. (95 mm TL, Regd. No. V/F/1589), Narpuh R.F. BL-I, R. Prang, 09.01.2003; 3 exs. (52 mm-56 mm TL, Regd. No. V/F/1655), Narpuh R.F. BL-I, Passadwar, 06.03.2003; 1 ex. (56 mm TL, Regd. No. V/F/1675), Narpuh R.F. BL-I, Ampasen, 07.03.2003.

Distribution in N.E. India : Meghalaya (East and West Khasi hills, Ri-Bhoi, East, West and South Garo hills, Jaintia hills), Assam, Arunachal Pradesh, Mizoram, Nagaland, Manipur, Tripura.

Elsewhere : Throughout India; AFGHANISTAN; BANGLADESH; MYANMAR; HAINAN; INDO-CHINA; IRAN; MALAYA; MALAYA ARCHIPELAGO; NEPAL; PAKISTAN; SIAM; SRI LANKA; TAIWAN; THAILAND; YUNNAN.

Remarks : Common in occurrence. Though it is a common species of N.E. India, but it's status is vulnerable at National level.

72. *Channa punctatus* (Bloch)

1793. *Ophiocephalus punctatus* Bloch, *Naturges ausland. Fische.* (7) : 139, pl.358 (Type locality : rivers and lakes of Coromondol coast).

Collection localities : 1 ex. (75 mm TL, Regd. No V/F/535), Narpuh R.F. BL-II, Umkiang stream, 14.09.1998; 4 exs. (45 mm - 95 mm TL, Regd. No. V/F/1453), Narpuh R.F. BL-II, Wahkoh, 02.10.2002.

Distribution in N.E. India : Meghalaya (Ri-Bhoi, East, West and South Garo hills, Jaintia hills), Assam, Arunachal Pradesh, Nagaland, Manipur, Tripura.

Elsewhere : Throughout India; AFGHANISTAN; BANGLADESH; MYANMAR; CHINA;

MALAYA; NEPAL; PAKISTAN; POLYNESIA; SRI LANKA; TAHITI.

Remarks Though it is a commonly occurring species but its occurrence in the region under report is not very common.

73. *Channa stewartii* (Playfair)

1793. *Ophiocephalus stewartii* Playfair, *Proc. Zool. Soc. London*, 14, pl.77, fig.3 (Type locality : Cachar, Assam).

Collection localities : 8 exs. (40 mm – 101 mm TL, Regd. No. V/F/708), Saipung WLS, 19.02.1999; 1 ex. (57 mm TL, Regd. No. V/F/775), Narpuh R.F., Lubha R. 13.05.1999; 3exs. (40 mm – 49 mm TL, Regd. No. V/F/1119), Saipung WLS, Umphang R., 19.12.1999; 2exs. (50 mm – 55 mm TL, Regd. No. V/F/1122), Saipung WLS, 21.12.1999; 5 exs. (43 mm – 62 mm TL, Regd. No. V/F/1123), Saipung WLS, Umphang R., 18.12.1999; 1 ex. (125 mm TL, Regd. No. V/F/1720), Narpuh R.F. BL-I, Kharpyrtap, 06.03.2003; 3 exs. (146 mm-175 mm TL, Regd. No. V/F/1721), Narpuh R.F. BL-I, Ampasen, 07.03.2003; 1 ex. (262 mm TL, Regd. No. V/F/1722), Narpuh R.F. BL-I, Ampasen, 07.03.2003.

Distribution in N.E. India : Meghalaya (East and West Khasi hills, Ri-Bhoi, East, West and South Garo hills, Jaintia hills), Assam, Arunachal Pradesh, Tripura.

Elsewhere : INDIA : W. Bengal, Bihar; NEPAL.

Remarks : Common in occurrence.

Order	TETRADONTIFORMES
Family	TETRADONTIDAE

74. *Tetraodon cutcutia* (Hamilton-Buchanan)

1822. *Tetraodon cutcutia* Hamilton-Buchanan, *Fishes of Ganges* : 8, 362; pl.18, fig.3 (Type locality : Ganges river).

Collection localities : 1 ex. (50 mm TL, Regd. No. V/3699), Narpuh R.F., 19.01.1984; 1 ex. (41 mm TL, Regd. No. V/F/1667), Narpuh R.F. BL-I, Ampasen, 07.03.2003; 1 ex. (52 mm TL, Regd. No. V/F/1713), Narpuh R.F. BL-I, Rymplung, 06.03.2003.

Distribution in N.E. India : Meghalaya (East Khasi hills, West and South Garo hills, Jaintia hills), Assam, Arunachal Pradesh, Manipur, Tripura.

Elsewhere : INDIA : W. Bengal, Bihar, Orissa; BANGLADESH.

Remarks : Not very commonly occurring in the region under report.

AMPHIBIA

A total of 277 examples of amphibia belonging to 15 species under 11 genera, 4 families and 1 order are reported. Identification is based on Chanda (1994) and Systematic arrangements are after Dutta (1M997).

Class	AMPHIBIA
Order	ANURA
Family	BUFONIDAE

1. *Bufo melanostictus* Schneider

1799. *Bufo melanostictus* Schneider, *Hist. Amph.*, 1 Jena. : 216 (Type locality: "Ex India Orientalis").

Collection locality : 1 ex. (49 mm TL, Regd. No. V/A/100), Narpuh Reserve Forest, BL-II, Umkiang stream, 13.09.1998.

Distribution within N.E. India : Throughout North-East India.

Elsewhere : Throughout India; CHINA; HONGKONG; INDONESIA; MALAYASIA; MYANMAR; NEPAL; PAKISTAN; PHILIPPINES; THAILAND; SRI LANKA.

Remarks : Though it is a commonly occurring species in N.E. India but its status is at present vulnerable.

2. *Bufoides meghalayananus* (Yazdani and Chanda)

1971. *Ansonia meghalayana* Yazdani and Chanda, *J. Assam. Sci. Soc.*, 14 (1) : 76-80. Type locality: "Plateau of large Hill at Mawblang, about 5 kms by road from Cherrapunjee", Meghalaya, India).

Collection locality : 1 ex. (10 mm TL, Regd. No. V/A/126), Narpuh R.F. BL-II, R. Dona, 13.05.1999.

Distribution within N.E. India : Meghalaya (E. Khasi hills, Jaintia hills), Assam, Mizoram.

Elsewhere : Same as above.

Remarks : It is a rarely occurring species. It's status is critical.

Family	MICROHYLIDAE
--------	--------------

+ 3. *Kaloula pulchra* (Grey)

1831. *Kaloula pulchra* Gray, *Zool. Misc.*, Pt. 1 : 38

Collection localities : 2 exs. (62 mm - 64 mm TL, Regd. No. V/A/253), Narpuh RF, BL-II, Umkiang, 22.04.1990; 1 ex. (60 mm TL, Regd. No. V/A/330), Narpuh RF, BL-II, Dona area, 29.09.2002.

Distribution within N.E. India : Meghalaya, Assam, Tripura.

Elsewhere : INDIA (Bihar, Karnataka, Madhya Pradesh, Orissa, Tamil Nadu, W. Bengal); SRI LANKA.

Remarks : Reported for the first time from Jaintia Hills district.

+4. *Microhyla berdmorei* (Blyth)

1856. *Engystoma* (?) *berdmorei* Blyth, *J.Asiat. Soc.Bengal* 24 : 720 (Type locality : "Pegu, Burma", Myanmar)

Collection localities : 1 ex. (37 mm TL, Regd. No. V/A/331), Narpuh RF, BL-II, Dona area, 29.09.2002; 1 ex. (32 mm TL, Regd. No. V/A/368), Narpuh RF, BL- I, R. Prang, 09.01.2003.

Distribution within N.E. India : Meghalaya (Garo hills), Assam, Arunachal Pradesh, Mizoram

Elsewhere : INDIA (as above); BANGLADESH; CAMBODIA; INDO-CHINA; INDONESIA; MALAYSIA; MYANMAR; THAILAND.

Remarks: Reported for the first time from J. Hills. Not very common in occurrence.

Family RHACOPHORIDAE

5. *Polypedates leucomystax* (Gravenhorst)

1828. *Hyla leucomystax* Gravenhorst, *Syst.Rept.*, : 31 (Type locality: "Java").

Collection localities : 2 exs. (66 mm – 75 mm TL, Regd. No. V/A/124), Narpuh R.F., Snapur area, 13.05.1999; 1 ex. (38 mm TL, Regd. No. V/A/125), Narpuh R.F., Sonapur area, 13.05.1999.

Distribution within N.E. India : Meghalaya (East Khasi hills, Jaintia hills, East Garo hills, South Garo hills), Assam, Arunachal Pradesh, Nagaland, Manipur, Mizoram.

Elsewhere: INDIA (Gujrat, Nicobar, Sikkim, W. Bengal); BORNEO; CHINA; JAPAN; JAVA; MALAY PENINSULA; MYANMAR; NEPAL; PHILIPPINES; SINGAPORE; SRI LANKA; SUMATRA; TAIWAN; THAILAND.

Remarks : Rarely occurring in the region under report.

Family RANIDAE

*6. *Amolops afghanus* (Gunther)

1858. *Polypedates afghana* Gunther, *Cat. Bat. Sal. Brit. Mus.*, London : 81 (Type locality: "Afghanistan" in error).

Collection locality : 1 ex. (76 mm TL, Regd. No. V/A/80), Narpuh R.F., Umkiang area, 05.11.1978.

Distribution within N.E. India : Meghalaya (East Khasi hills, South Garo hills, Jaintia hills), Assam, Arunachal Pradesh, Mizoram, Tripura.

Elsewhere : INDIA (W. Bengal, W. Himalayas); CHINA; MYANMAR; NEPAL.

Remarks : Not very common in occurrence. Presently synonymised with *Amolops marmoratus* (Blyth)

+7. *Amolops gerbillus* (Annandale)

1912. *Rana gerbillus* Annandale, *Rec. Indian Mus.* 8 (1) : 10 (Type locality : "Yembung, Abor Foot hills, at an alt. of 1100 ft.", Arunachal Pradesh, India).

Collection locality : 1 ex. (24 mm TL, Regd. No. V/A/371), Narpuh RF, BL-I, Kharkara 12.01.2003.

Distribution within N.E. India : Meghalaya (East Khasi hills, Ri-Bhoi, South Garo hills), Assam, Arunachal Pradesh, Mizoram.

Elsewhere : CHINA; MYANMAR; TIBET.

Remarks : Reported for the first time from Jaintia hills. Rarely occurring in the region under report.

8. *Euphlyctis cyanophlyctis* (Schneider)

1799. *Rana cyanophlyctis* Schneider, *Hist. Amph.*, 1 : 137 (Type locality: "Eastern India")

Collection localities : 14 exs. (18 mm – 27 mm TL, Regd. No. V/A/95), Saipung and around, 09.09.1998; 1 ex. (51 mm TL, Regd. No. V/A/96), Narpuh R.F. BL-II, Lubha R., 11.09.1998; 5 exs. (36 mm – 38 mm TL, Regd. No. V/A/101), Narpuh R.F. BL-II, Umkiang stream, 14.09.1998; 7 exs. (34 mm – 55 mm TL, Regd. No. V/A/118), Saipung and around, 19.02.1999; 8 exs. (23 mm – 30 mm TL, Regd. No. V/A/119), Saipung Wild Life Sanctuary, Diastom village, 21.02.1999; 9 exs. (35 mm – 61 mm TL, Regd. No. V/A/120), Narpuh R.F. BL-II, Umkiang stream, 14.05.1999; 1 ex. (48 mm TL, Regd. No. V/A/122), Narpuh R.F. BL-II, Umkiang stream, 15.05.1999; 5 exs. (25 mm – 30 mm TL, Regd. No. V/A/153), Saipung WLS, Diastom village, 17.12.1999; 2 exs. (25 mm – 27 mm TL, Regd. No. V/A/154), Saipung WLS, Umphang R., 18.12.1999.

Distribution within N.E. India : Throughout N.E. India.

Elsewhere : Throughout INDIA; AFGHANISTAN; BANGLADESH; BHUTAN; MYANMAR; NEPAL; PAKISTAN; SOUTH ARABIA; SRI LANKA.

Remarks : Very common in occurrence.

+ 9. *Euphlyctis hexadactylus* (Lesson)

1834. *Rana hexadactyla* Lesson, *Voy. Ind. Or. Rept.* : 331 (Type locality: "South India").

Collection localities : 12 exs. (23 mm - 38 mm TL, Regd. No. V/A/326), Narpuh RF, BL-II, Sonapur, 30.09.2002; 6 exs. (33 mm - 46 mm TL, Regd. No. V/A/329), Narpuh RF, BL-II, Wahkoh, 02.10.2002; 6 exs. (34 mm - 46 mm TL, Regd. No. V/A/334), Narpuh RF, BL-II, Umkiang, 03.10.2002; 6 exs. (32 mm - 38 mm TL, Regd. No. V/A/335), Narpuh RF, BL-II, Umkiang, 03.10.2002; 6 exs. (33 mm - 55 mm TL, Regd. No. V/A/367), Narpuh RF, BL-I, R. Prang, 09.01.2003; 15 exs. (43 mm - 52 mm TL, Regd. No. V/A/369), Narpuh RF, BL-I, R. Prang, 10.01.2003; 1 ex. (55 mm TL, Regd. No. V/A/372), Narpuh RF, BL-I, Khorkara, 12.01.2003; 10 exs. (28 mm - 38 mm TL, Regd. No. V/A/373), Narpuh RF, BL-I, R. Prang, 08.01.2003; 1 ex. (38 mm TL, Regd. No. V/A/376), Narpuh RF, BL-I, Khorkara, 11.01.2003 ; 3 exs. (38 mm - 57 mm TL, Regd. No. V/A/389), Narpuh RF, BL-I, R. Laichiki, 04.03.2003; 9 exs. (32 mm - 50 mm TL, Regd. No. V/A/390), Narpuh RF, BL-I, Amsing, 04.03.2003; 4 exs. (31 mm - 55 mm TL, Regd. No. V/A/391), Narpuh RF, BL-I, Rymplung, 06.03.2003; 1 ex. (32 mm TL, Regd. No. V/A/392), Narpuh RF, BL-I, Kharkara, 06.03.2003; 10 exs. (31 mm - 54 mm TL, Regd. No. V/A/393), Narpuh RF, BL-I, R. Prang, 04.03.2003 ; 12 exs. (33 mm - 51 mm TL, Regd. No. V/A/394), Narpuh RF, BL-I, Narpuh RF, BL-I, Umblei, 08.03.2003; 2 exs. (41 mm - 57 mm TL, Regd. No. V/A/395), Narpuh RF, BL-I, Ampasen, 07.03.2003; 5 exs. (33 mm - 37 mm TL, Regd. No. V/A/396), Narpuh RF, BL-I, Umblei, 08.03.2003; 14 exs. (27 mm - 42 mm TL, Regd. No. V/A/397), Narpuh RF, BL-I, Pyrhung, 05.03.2003; 13 exs. (32 mm - 51mm TL, Regd. No. V/A/398), Narpuh RF, BL-I, Umblei, 08.03.2003; 12 exs. (31 mm - 46mm TL , Regd. No. V/A/399), Narpuh RF, BL-I, Kanjalet, 05.03.2003; 7 exs. (32 mm - 47mm TL, Regd. No. V/A/400), Narpuh RF, BL-I, R. Prang, 04.03.2003; 3 exs. (29 mm - 35 mm TL, Regd. No. V/A/401), Narpuh RF, BL-I, Amkumbi, 05.03.2003; 3 exs. (67 mm - 75 mm TL, Regd. No. V/A/402), Narpuh RF, BL-I, Ampasen, 07.03.2003; 4 exs. (48 mm - 62 mm TL, Regd. No. V/A/406), Narpuh RF, BL-I, Ampasen, 07.03.2003; 2 exs. (45 mm - 62 mm TL, Regd. No. V/A/407), Narpuh RF, BL-I, Rymplung, 06.03.2003; 2 exs. (55 mm - 60 mm TL, Regd. No. V/A/408) Narpuh RF, BL-I, Ampasen, 07.03.2003.

Distribution within N.E. India : All the States of N.E. India.

Elsewhere : INDIA (Kerala, Maharashtra, Orissa, Tamil Nadu, West Bengal, Through out South, West and Eastern India); BANGLADESH; SRI LANKA.

Remarks : So far it was reported only from Tripura in N.E. India. But at present it is recorded from all the other states of N.E. India also. Reported for the first time from J. Hills.

10. *Hoplobatrachus tigerinus* (Daudin)

1803. *Rana tigerina* Daudin, *Hist. Rain. Gren. Crap.*, 64 (Type locality: "Bengal").

Collection localities : 1 ex. (79 mm TL, Regd. No. V/A/103), Narpuh R.F. BL-II, Umkiang stream, 14.09.1998; 1 ex. (87 mm TL, Regd. No. V/A/328), Narpuh R.F. BL-II, Wahkoh, 02.10.2002; 1ex. (133 mm TL, Regd. No. V/A/403), Narpuh R.F. BL-I, Umblei, 08.03.2003.

Distribution within N.E. India : Meghalaya (Jaintia hills), Assam, Mizoram, Nagaland, Manipur, Tripura.

Elsewhere : All over India; BANGLADESH; MYANMAR; NEPAL; CHINA; INDO-CHINA, MADAGASCAR (Introduced); PAKISTAN; SRI LANKA.

Remarks : Not very commonly occurring species. It's status is at present vulnerable.

+ 11. *Limnonectes laticeps* (Boulenger)

1882. *Rana laticeps* Boulenger, *Cat. Batra. Sal. Brit. Mus. London* : 20 (Type locality : "Khassya and Bengal", India).

Collection localities : 1 ex. (43 mm TL, Regd. No. V/A/324), Narpuh RF, BL-II, Malidhar R. 01.10.2002; 2 exs. (24 mm - 27 mm TL, Regd. No. V/A/375), Narpuh RF, BL-I, Kynglet, 08.01.2003.

Distribution within N.E. India : Meghalaya, Assam, Arunachal Pradesh.

Elsewhere : INDIA (W. Bengal); BANGLADESH; MALAY ARCHIPELAGO; MYANMAR; THAILAND.

Remarks : Reported for the first time from J. Hills. Not very commonly occurring species.

12. *Fejervarya limnocharis* (Gravenhorst)

1829. *Rana limnocharis* Gravenhorst, *Del.Mus.Zool.*: 42 (Type locality : "Java" Indonesia).

Collection localities : 4exs. (32 mm - 41 mm TL, Regd. No. V/A/97), Narpuh R.F. BL-II, Lubha R., 11.09.1998; 1 ex. (24 mm TL, Regd. No. V/A/99), Narpuh R.F. BL-II, Umkiang stream, 13.09.1998; 2 exs. (33 mm – 54 mm TL, Regd. No. V/A/102), Narpuh R.F. BL-II, Umkiang stream, 14.09.1998; 11 exs. (27 mm – 42 mm TL, Regd. No. V/A/121), Narpuh R.F. BL-II, Umkiang area, 14.05.1999; 1 ex. (29 mm TL, Regd. No. V/A/123), Narpuh R.F. BL-II, Umkiang stream, 15.05.1999; 1 ex. (34 mm TL, Regd. No. V/A/325), Narpuh R.F. BL-II, Malidhar R., 01.10.2002; 4 exs. (19 mm - 44 mm TL, Regd. No. V/A/327), Narpuh R.F. BL-II, Sonapur, 30.09.2002; 1 ex. (38 mm TL, Regd. No. V/A/332), Narpuh R.F. BL-II, Dona R. 29.09.2002; 2 exs. (21 mm - 39 mm TL, Regd. No. V/A/333), Narpuh R.F. BL-II, Umkiang, 03.10.2002; 1 ex. (25 mm TL, Regd. No. V/A/370), Narpuh R.F. BL-I, R. Prang, 10.01.2003; 1 ex. (34 mm TL, Regd. No. V/A/374), Narpuh R.F. BL-I, R. Prang, 08.01.2003.

Distribution within N.E. India : Throughout N.E. India.

Elsewhere : All over India; BANGLADESH; BORNEO; S.W. CHINA; MALAYSIA; INDONESIA; S.E. JAPAN; JAVA; MYANMAR; NEPAL; PAKISTAN; PHILIPPINES; SRI LANKA; SUMATRA; TAIWAN; THAILAND; VIETNAM.

Remarks : Though it is a very commonly occurring species in this region, but it's status is at present vulnerable.

+ 13. *Occidozyga borealis* (Annandale)

1912. *Micrixalus borealis* Annandale, *Rec. Indian Mus.* 8 (1) : 10-12 (Type locality : "Rotung, Arunachal Pradesh, India).

Collection localities : 2 exs. (21 mm - 22 mm TL, Regd. No. V/A/445), Narpuh R.F. BL- I, R. Prang, 10.01.2003; 2 exs. (23 mm - 25 mm TL, Regd. No. V/A/446), Narpuh R.F. BL-I, Khorkara, 12.01.2003; 1 ex. (24 mm TL, Regd. No. V/A/447), Narpuh R.F. BL-I, R. Prang, 10.1.03; 1 ex. (23 mm TL, Regd. No. V/A/448), Narpuh R.F. BL-I, R. Prang, 11.01.2003.

Distribution within N.E. India : Arunachal Pradesh, Meghalaya.

Elsewhere : Same as above.

Remarks : Reported for the first time from Jaintia hills, Meghalaya. Rarely occurring species. It's status is endangered.

14. *Rana erythraea* (Schlegel)

1837. *Hyla erythraea* Schlegel, *Abbild* : 27 (Type locality : "Java", Indonesia).

Collection localities : 1 ex. (37 mm TL, Regd. No. V/A/323), Narpuh R.F. BL-II, R. Malidhar, 01.10.2002.

Distribution within N.E. India : Meghalaya (W. Khasi Hills, Ri-Bhoi, J. Hills, E. Garo Hills), Assam, Arunachal Pradesh, Mizoram, Nagaland.

Elsewhere : INDIA (W. Bengal); INDO-CHINA; INDONESIA; MALAY PENINSULA; MYANMAR; THAILAND.

Remarks : Not very common in occurrence.

15. *Rana taipehensis* van Denburgh

1909. *Rana taipehensis* van Denburgh, *Proc. Acad. Sci.* 4 : 56 (Type locality : "Taipeh, Formosa" , Taiwan).

Collection localities : 1ex. (30 mm TL, Regd. No. V/A/98), Narpuh R.F., Lubha R.,

11.09.1998; 1 ex. (24 mm TL, Regd. No. V/A/104), Narpuh R.F., Umkiang stream, 14.09.1998.

Distribution within N.E. India : Meghalaya (Jaintia hills), Assam, Arunachal Pradesh.

Elsewhere : INDIA (Orissa, W. Bengal); CHINA; HONGKONG; MYANMAR; TAIWAN; THAILAND; VIETNAM.

Remarks : Not very common in occurrence.

REPTILIA

A total of 16 species of reptiles under 12 genera, 5 families and 1 order have been reported. Current synonyms are followed after Das (1997). Classification is followed after Smith (1935, 1943).

Phylum	CHORDATA
Class	REPTILIA
Order	SQUAMATA
Family	AGAMIDAE

1. *Calotes emma* Gray

1845. *Calotes emma* Gray, *Cat. Liz. Brit. Mus.* p. 244.

Collection locality : 1 ex. Regd. No. VR/ERS/ZSI/81, Wahluri, Narpuh R.F-I, 06.03.2003, S.J.S. Hattar.

Distribution within N.E. India : Meghalaya (Garo hills and Jaintia hills); Assam; Manipur.

Elsewhere : FRENCH INDO-CHINA; MALAY PENNINSULA; MYANMAR; PULO CONDORE; SIAM; YUNNAN.

2. *Calotes versicolor* (Daudin)

1802. *Agama versicolor* Daudin, *Hist. Nat. Rept.* iii, p. 395.

Collection locality : 1 ex. Regd. No. VR/ERS/ZSI/67, Muktapur, Jaintia Hills, 07.08.1987, K. Allia; 1 ex. Regd. No. VR/ERS/ZSI/77, Narpuh R.F.-I, Jaintia Hills, 11.01.2003, R. Mathew.

Distribution within N.E. India : The whole of N.E. India.

Elsewhere : INDIA INDO-CHINESE SUB REGION; AFGHANISTAN; CHINA; HAINAN; HONGKONG; MALAY PENNINSULA; SRI LANKA; SUMATRA.

3. *Japalura planidorsata* Jerdon

1870. *Japalura planidorsata* Jerdon, *P. Asiat. Soc. Beng.* p. 76.

Collection locality : 1 ex. Regd. No. VR/ERS/ZSI/79., Amsing, Narpuh R.F.-I, 04.03.2003, S.J.S. Hattar.

Distribution within N.E. India : Meghalaya (Khasi, Jaintia and Garo hills), Assam.

Elsewhere : NORTH CHINA HILLS.

4. *Ptyctolaemus gularis* Peters

1864. *Otocryptis (Ptyctolaemus) gularis* Peters, *Mon. Akad. Berlin* , p. 386.

Collection locality : 1 ex., Regd. No. VR/366, Jaintia hills, 5 miles South of Jówai IB; A.S. Rajagopal.

Distribution within N.E. India : Meghalaya : East Khasi Hills and Jaintia Hills.

Elsewhere : NORTH CHINA HILLS.

Family GEKKONIDAE

5. *Cosymbotus platyurus* (Schneider)

1792. *Stellio platyurus* Schneider, *Amphib. Physiol.* II., p. 30.

Collection locality : 1 ex. Regd. No. VR/ERS/ZSI/75, Kynglet, Narpuh R.F.-I, 08.01.2003, R. Mathew.

Distribution within N.E. India : Meghalaya (Khasi, Jaintia and Garo hills); Arunachal Pradesh.

Elsewhere : INDIA : Sikkim, West Bengal; FORMOSA; HONG KONG; INDO-CHINA; NEPAL; SRI LANKA.

Family SCINCIDAE

6. *Mabuya macularius* (Blyth)

1853. *Euprepes macularius* Blyth, *J. Asiat. Soc. Beng.* xxii, p. 652.

Collection locality : 1 ex., Regd. No. VR/ERS/ZSI/70, Jaintia Hills, Sonapur area, Narpuh R.F.-II, 30.09.2002, S.J.S. Hattar.

Distribution within N.E. India : Meghalaya (Khasi, Jaintia and Garo hills), Assam.

Elsewhere : INDIA : Bihar, Orissa, Uttar Pradesh, West Bengal; ANNAM; CAMBODIA; MALAY PENINSULA; MYANMAR; SIAM.

7. *Mabuya multifasciata multifasciata* (Kuhl)

1820. *Scincus multifasciatus* Kuhl, *Beitr. Zool. Vergl. Anat.* p. 126.

Collection locality : 1 ex., Regd. No. VR/ERS/ZSI/76, Narpuh R.F.-I, Kynglet, near forest beat, 08.01.2003, R. Mathew.

Distribution within N.E. India : Meghalaya (Jaintia and Garo hills); Manipur; Nagaland.

Elsewhere : INDIA : Nicobar Island; West Bengal; EAST INDIES; HAINAN; MALAY PENINSULA; NEW GUINEA; PULO CONDORE; TONGKING; YUNNAN.

Family VARANIDAE

* 8. *Varanus bengalensis* (Daudin)

1802. *Tupinambis bengalensis* Daudin, *Hist. Nat. Rept.* iii, p. 67.

Collection locality : Nil.

Distribution within N.E. India : Meghalaya (East Khasi hills, Jaintia and Garo hills).

Elsewhere : The whole of India; MYANMAR; NEPAL; PAKISTAN; PERSIA; SRI LANKA.

Family BOIDAE

* 9. *Python molurus* (Linnaeus)

1758. *Coluber molurus* Linnaeus, *Syst. Nat.* 10th Ed. p.225.

Collection locality : Nil.

Distribution within N.E. India : Meghalaya (East Khasi hills, Jaintia hills); Arunachal Pradesh; Assam; Manipur; Mizoram; Nagaland, Tripura.

Elsewhere : INDIA : West Bengal; Peninsular India; CHINA; HAINAN; HONGKONG; SRI LANKA.

Family COLUBRIDAE

10. *Amphiesma xenura* (Wall)

1907. *Tropidonotus xenura* Wall, *J. Bombay nat. Hist. Soc.* xvii, p. 616 (Type locality not known; type lost).

Collection locality : 1 ex., Regd. No. V/R/107 Saipung Wildlife Sanctuary, Jaintia Hills, 13.09.1998, N. Sen..

Distribution within N.E. India : Meghalaya (E. Khasi Hills, W. Garo Hills).

Elsewhere : Not known.

Remarks : Gayen (2001) erroneously identified the above specimen as *Amphiesma venningi* (Wall).

11. *Dendrelaphis pictus* (Gmelin)

1789. *Coluber pictus* Gmelin, *Syst. Nat.*, p. 1116.

Collection locality : 1 ex., Regd. No. VR/ERS/ZSI/80, Narpuh R.F.-I, Amkumbi, 05.03.2003, S.J.S. Hattar.

Distribution within N.E. India : Meghalaya (Jaintia hills); Assam.

Elsewhere : The whole of the INDO-CHINESE REGION.

12. *Dendrelaphis tristis* (Daudin)

1803. *Coluber tristis* Daudin, *Hist. Nat. Rept.*, 6, p. 430.

Collection locality : 1 ex., Regd. No. VR/ERS/ZSI/63, Saipung Wild life Sanctuary, 12.09.1998, N. Sen.

Distribution within N.E. India : Meghalaya (Jaintia hills).

Elsewhere : INDIA : West Bengal; Tamil Nadu; Kerala; SRI LANKA.

13. *Elaphe radiata* (Schlegel)

1837. *Coluber radiatus* Schlegel, *Phys. Serp.* ii p.135.

Collection locality : 1 ex., Regd. No. VR/1300, Jaintia hills, Khliehriat road, 3 kms. from Sonapur, 27.08.1974, A.R. Lahiri.

Distribution within N.E. India : Meghalaya (Khasi hills, Garo hills & Jaintia hills); Manipur.

Elsewhere : INDIA : Eastern Himalayas; INDO-CHINESE SUB REGION; MALAY ARCHIPELAGO.

14. *Oligodon dorsalis* (Gray & Harwicke)

1834. *Elaps dorsalis* Gray & Hardwicke, *Ill. Ind. Zool.* ii.

Collection locality : 1 ex., Regd. No. VR/ERS/ZSI/62, Lubha river, Umkiang, Narpuh R.F.-II, 11.09.1998, N. Sen.

Distribution within N.E. India : Meghalaya (West Garo hills and Jaintia hills); Nagaland.

Elsewhere : INDIA : West Bengal; MYANMAR.

15. *Rhabdophis himalayanus* (Gunther)

1837. *Tropidonotus subminiatus* Schlegel, *Phys. Serp.ii*, p.313.

Collection locality : 1 ex., Regd. No. VR/8124, Jaintia hills, Sonapur river side, 27.03.1981, R. Zoramthanga.

Distribution within N.E. India : Meghalaya (East Khasi hills, Jaintia hills); Manipur; Nagaland.

Elsewhere : INDIA : Eastern Himalayas; MYANMAR.

16. *Sibynophis collaris* Gray

1853. *Psammophis collaris* Gray, *Ann. Mag. Nat. Hist.(2)* xii, p.390.

Collection locality : 1 ex., Regd. No. VR/922, Jowai, Jaintia Hills, 04.10.1972, A.R. Lahiri.

Distribution within N.E. India : Meghalaya (East Khasi hills, Jaintia hills).

Elsewhere : INDIA : The Himalayas; ANNAM; LAOS; MALAY PENINSULA; MYANMAR; SIAM.

Class	AVES
Order	PSITTACIFORMES
Family	PSITTACIDAE

(1) *Psittacula alexandri fasciata* (P.L.S.Muller) - Indian Red breasted Parakeet.

Order	CORACIFORMES
Family	ALCEDINIDAE

(2) *Alcedo atthis bengalensis* Gmelin - Indian Small Blue King fisher

Family	BMUCEROTIDAE
--------	--------------

(3) *Anthracoseros malabaricus malabaricus* (Gmelin) Indian Pied Hornbill.

(4) *Buceros bicornis homrai* Hodgson

Family MEROPIDAE

(5) *Nyctyornis athertoni athertoni* (Jardine & Selby) - Blue bearded Bee-Eater.

Order PASSERIFORMES

Family CORVIDAE

(6) *Dendrocitta formosae himalayana* Jerdon - East -Himalayan Tree Pie

Family CAMPEPHAGIDAE

(7) *Pericrocotus flammeus fraterculus* Swinhoe - Burmese Scarlet Minivet.

Family IRENIDAE

(8) *Aegithina tiphia tiphia* (Linnaeus) - Common Iora.

(9) *Chloropsis aurifrons aurifrons* (Temminck) - Northern Gold fronted Chloropsis.

(10) *Irena puella puella* (Latham) - Fairy Blue bird.

Family STURNIDAE

(11) *Gracula religiosa intermedia* A.Hay - Northern Hill Myna.

Family PYCNONOTIDAE

(12) *Pycnonotus melanicterus flaviventris* (Tickell) - Black crested Yellow Bulbul.

(13) *Pycnonotus cafer bengalensis* Blyth - Bengal Red vental Bulbul

(14) *Criniger flaveolus flaveolus* (Gould) - White throated Bulbul.

Family MUSCICAPIDAE

(15) *Macronous gularis rubricapilla* (Tickell) - Yellow Breasted Babbler.

(16) *Heterophasia gracilis* (McClelland) - Grey Sibia.

(17) *Copsychus saularis erimelas* (Oberholser) - Assam Magpie Robbin.

(18) *Enicurus immaculatus* (Hodgson) - Black backed Fork tail.

(19) *Saxicola torquata przewalskii* (Pleske) - Tibetan Collared Bush Chat.

(20) *Monticola solitarius pandoo* (Sykes) - Indian Blue Rock Thrush.

Family NECTARINIIDAE

(21) *Arachnothera longirostris longirostris* (Latham) - Little Spider Hunter.

Order PICIFORMES

Family CAPITONIDAE

(22) *Megalaima lineata hodgsoni* Bonaparte - Eastern Lineated Barbet.

Family PICIDAE

- (23) *Chrysocolaptes lucidus sultaneus* (Hodgson) - West Himalayan Larger Golden backed Woodpecker.

Order GALLIFORMES

Family PHASIANIDAE

- (24) *Gallus gallus murghi* Robinson & Kloss - Indian Red Jungle Fowl.
 (25) *Lophura leucomelana lathami* (J.E. Gray) - Black breasted Kaleej Pheasant.

Class MAMMALIA

Order INSECTIVORA

Family TALPIDAE

- (1) *Talpa leucura* Blyth - Eastern Mole.

Family SORICIDAE

- (2) *Suncus murinus griffithi* (Horsfield) - House Shrew.
 (3) *Suncus etruscus nudipes* (Blyth) - Savi's Pygmy Shrew.
 (4) *Crocidura attenuata rubricosa* (Anderson) - Grey Shrew.
 (5) *Anourosorex squamipes* (Milne Edwards)

Order CHIROPTERA

Family PTEROPODIDAE

- (6) *Rousettus leschenaulti leschenaulti* (Desmarest) - Indian Fulvous Fruit Bat.
 (7) *Cynopterus sphinx sphinx* (Vahl.) - Short nosed Fruit Bat.
 (8) *Eonycteris spelaea spelaea* (Dobson) - Dobson's Long tongued Fruit Bat.
 (9) *Macroglossus sobrinus sobrinus* Anderson - Greater Long tongued Fruit Bat.

Family RHINOLOPHIDAE

- (10) *Rhinolophus affinis himalayanus* Anderson - Allied Horse Shoe Bat.
 (11) *Rhinolophus lepidus lepidus* Blyth - Little Indian Horse Shoe Bat.
 (12) *Rhinolophus luctus perniger* Hodgson - Great Eastern Horse Shoe Bat.
 (13) *Rhinolophus pearsoni* Horsfield - Pearson's Horse Shoe Bat.
 (14) *Hipposideros armiger armiger* (Hodgson) - Great Himalayan Leaf nos

Family VESPERTILIONIDAE

- (15) *Myotis siligorensis siligorensis* (Horsfield) - Tarai Bat.
 (16) *Myotis horsfieldii* (Temminck)

- (17) *Pipistrellus coromandra coromandra* (Gray) - Indian Pipistrelle.
 (18) *Barbastella leucomelas darjelingensis* (Hodgson) - Eastern Barbestella.
 (19) *Scotomanes ornatus ornatus* (Blyth) - Harleguin Bat.
 (20) *Murina tubinaris* (Scully) - Scully's Tube nosed Bat.
 (21) *Murina cyclotis cyclotis* Dobson - Round eared tube nosed Bat.
 (22) *Kerivoula hardwickei depressa* Miller - Hardwicke's Bat.

Order PRIMATES
 Family CERCOPITHECIDAE

- (23) *Presbytis pileatus pileatus* Blyth

Order CARNIVORA
 Family CANIDAE

- (24) *Canis aureus* Linnaeus.

Family URSIDAE

- (25) *Melursus ursinus* (Shaw) - Sloth bear.
 (26) *Selenarctos thibetanus* (G. Cuvier) - Asiatic black bear.

Family MUSTELIDAE

- (27) *Arctonyx collaris collaris* F. Cuvier - Hog badger.
 (28) *Lutra lutra monticola* Hodgson - Common otter.
 (29) *Aonyx cinerea concolor* (Rafinesque) - Oriental small clawed otter.

Family VIVERRIDAE

- (30) *Viverra zibetha zibetha* Linnaeus - Large Indian Civet.

Family HERPESTIDAE

- (31) *Herpestes auropunctatus* (Hodgson) - Small Indian Mongoose.

Family FELIDAE

- (32) *Felis bengalensis bengalensis* Kerr - Leopard Cat.
 (33) *Felis chaus* Gulden staedt - Jungle cat.
 (34) *Panthera tigris tigris* (Linnaeus) - Tiger.
 (35) *Neofelis nebulosa* (Griffith) - Clouded Leopard.

Order PROBOSCIDEA
 Family ELEPHANTIDAE

- (36) *Elephas maximus indicus* G. Cuvier - Indian Elephant.

Order ARTIODACTYLA

Family CERVIDAE

(37) *Muntiacus muntjak vaginalis* (Boddaert) - Barking Deer.

(38) *Cervus unicolor equines* G. Cuvier - Sambar.

Family BOVIDAE

(39) *Bos gaurus* H. Smith - Gaur/Indian Bison.

(40) *Capricornis sumatraensis* (Bechstein) - Serow.

Order RODENTIA

Family SCIURIDAE

(41) *Hyolpetes alboniger alboniger* (Hodgson) - Phayre's Flying Squirrel.

(42) *Callosciurus erythraeus erythraeus* (Pallas) - Pallas's Squirrel.

(43) *Callosciurus erythraeus erythrogaster* (Blyth) - Pallas's Squirrel.

(44) *Callosciurus pygerythrus blythi* (Tytler) - Irrawaddy Squirrel.

(45) *Dremomys lokriah macmillani* Thomas - Orange bellied Himalayan Squirrel.

(46) *Funambulus pennanti* Wroughton - Northern Palm Squirrel

Family RHIZOMYIDAE

(47) *Cannomys badius badius* (Hodgson) - Bay Bamboo Rat.

Family MURIDAE

(48) *Chiropodomys gliroides gliroides* (Blyth) - Pencil tailed Tree Mouse.

(49) *Vandeleuria oleracea dumeticola* (Hodgson) - Palm Mouse.

(50) *Rattus rattus brunneusculus* (Hodgson) - House rat.

(51) *Rattus rattus tistae* Hinton - Black rat.

(52) *Rattus nitidus nitidus* (Hodgson) - Himalayan rat.

(53) *Rattus sabanus garonum* Thomas - Noisy rat.

(54) *Niviventer fulvescens fulvescens* (Gray) - Chestnut rat.

(55) *Mus musculus castaneus* Water house - House mouse.

(56) *Mus musculus homourus* Hodgson - Southern Himalayan House Mouse.

(57) *Mus cervicolor nagarum* (Thomas) - Fawn Coloured Mouse.

(58) *Mus booduga booduga* (Gray) - Little Indian Field Mouse.

(59) *Mus pahari jacksoniae* (Thomas) - Sikkim Mouse.

(60) *Bandicota bengalensis bengalensis* (Gray) - Lesser Bandicoot rat.

(61) *Bandicota indica nemorivaga* (Hodgson) - Large Bandicoot rat.

DISCUSSION

The present report deals with some faunal groups collected and identified from the area concerned during present surveys. However some of the species of various faunal groups which were not collected during the present study, but already reported earlier have also been incorporated wherever possible as per the available records.

Lower groups belonging to 13 species of Mollusca (Fauna of Meghalaya, 1995, Part 8), 1 species of Annelida (Fauna of Meghalaya, 1999, Part-9), 9 species of Cladocera (Fauna of Meghalaya, 1999, Part-9), 13 species of Odonata (Fauna of Meghalaya, 1995, Part-3), 3 species of Coleoptera, 3 species of Hemiptera and 14 species of Hymenoptera are reported.

The area under report is rich in diversified fish fauna which contributes 74 species under 46 genera, 23 families and 7 orders. 16 Species reported for the first time from Jaintia Hills. On the basis of percentage, occurrence of different orders are Cypriniforms (56.7%), followed by Perciformes (17.6%), Siluriformes (15%), Synbranchiformes (6.8%), Beloniformes (1.3%), Cyprinodontiformes (1.3%) and Tetraodontiformes (1.3%). Statuswise 14 vulnerable species (*Barilius barila*, *Puntius chola*, *P. conchoni*, *P. gelius*, *P. sarana sarana*, *P. shalynius*, *Psilorhynchoides homaloptera*, *Lepidocephalus menoni*, *Mystus bleekeri*, *Mystus vittatus*, *Heteropneustes fossilis*, *Chaudhuria (Pillaia) indica*, *Anabas testudineus* & *Channa orientalis*) and 5 endangered (*Tor putitora*, *Naziritor chelynoides*, *Schistura sikmaiensis*, *Lepidocephalus berdmorei* and *Laguvia shawi*) species are occurring in the region under report.

Major percentage of the fauna belongs to Cyprinids (43.2%). Occurrence of minor carps are more than major carps. Commercially important fishes are *Labeo* spp, *Puntius* spp., *Neolissocheilus* sp., *Tor* sp., *Amblypharyngodon* sp., *Barilius* spp., *Salmostama* spp., *Mystus* sp., *Heteropneustes* sp., *Monopterus* sp., *Chanda* sp., *Parambassis* spp., *Nandus* sp., *Anabas* sp., *Colisa* spp., and *Chanda* spp. Ornamental fishes like *Danio* spp., *Brachydanio* sp., *Schistura* spp., *Lepidocephalus* spp., *Laguvia* sp. and *Badis* sp. are noteworthy.

Regarding Amphibia, 15 species under 11 genera, 4 families and 1 order have been recorded from the area. 6 Species reported for the first time from Jaintia Hills. Dominating species are *Euphlyctis cyanophlyctis*, *E. hexadactylus*, *Fejervarya limnocharis* and *Bufo melanostictus*. Other species are rarely occurring in the area. Statuswise 3 vulnerable species (*Bufo melanostictus*, *Fejervarya limnocharis* and *Hoplobatrachus tigerina*), one critical (*Bufoides meghalayana*) and one endangered (*Occidozyga borealis*) species are occurring in the region under report.

For Reptilia, out of 16 species, 2 species namely *Dendrelaphis tristis* and *Amphiesma xenura* have been reported for the first time from the area.

List of 25 species of birds and 61 species of mammals is also incorporated.

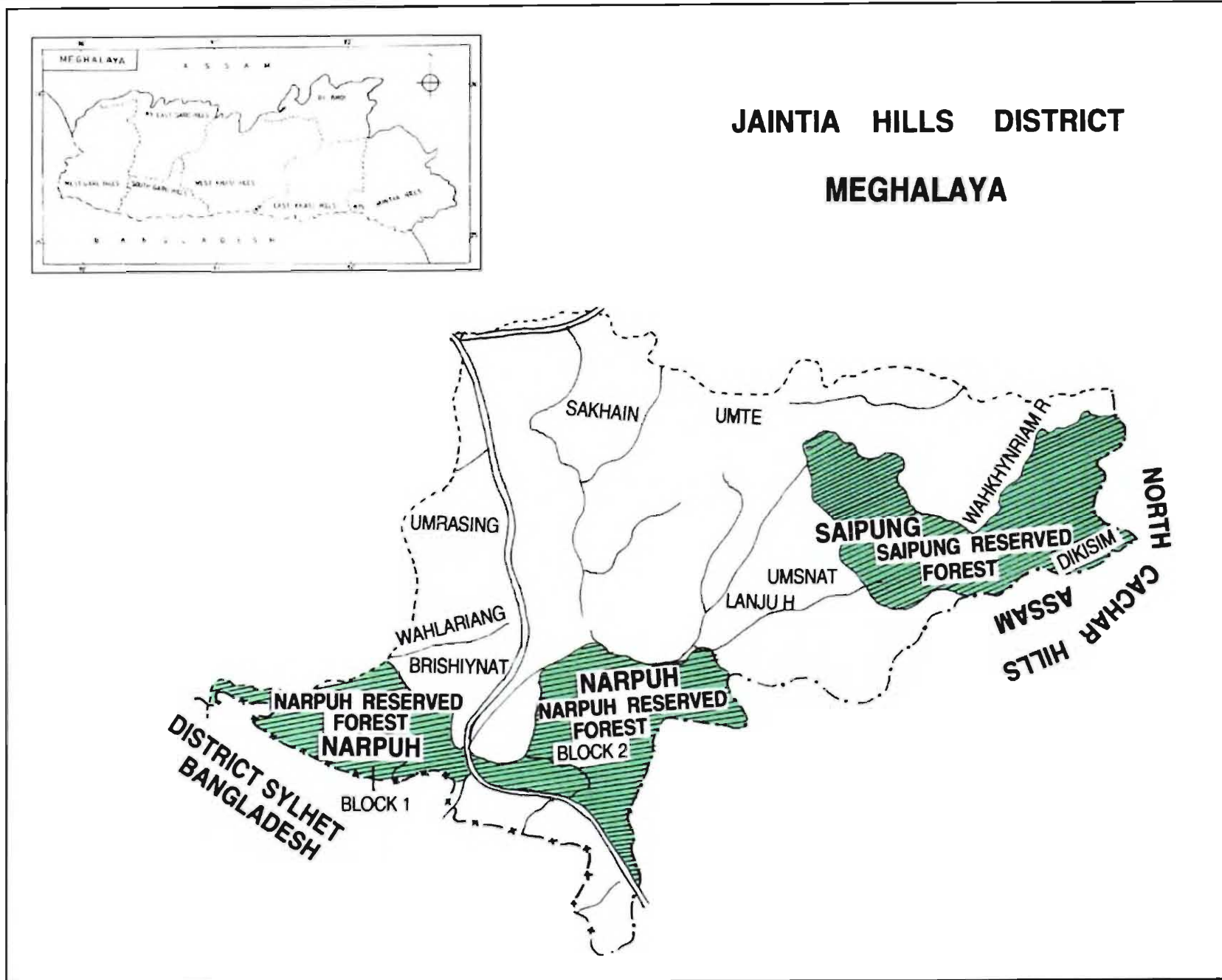
ACKNOWLEDGEMENT

The authors are grateful to Dr. J.R.B. Alfred, Director, Zoological Survey of India, Kolkata for permission to undertake the study. The groups, mollusca, annelida, hemiptera, and coleoptera were identified by experts from concerned sections at H.Qs., Zoological Survey of India, Kolkata. The help and guidance rendered by the Meghalaya State Forest Department is gratefully acknowledged.

REFERENCES

- Bingham, C.T. 1903. Fauna of British India, including Ceylon and Burma, Hymenoptera : 2, Ants and Cuckoo Wasps, 506pp.
- Bolton, B. 1995. A new general catalogue of the ants of the World, pp. 504 Harvard University Press. Cambridge, Massachusetts, London.
- Chanda, S.K. 1994. Anurans (Amphibia) Fauna of North-East India. *Mem. Zool. Surv. India*, **18** (2) : 1-143.
- Das, I. 1997. Checklist of the Reptiles of India with common English names. *Hamadryad*. **22** : 32-45.
- Dutta, S.K. 1997. Amphibians of India and Sri Lanka (Checklist and Bibliography), pp.342+ i-xxii, Odyssey Publishing House, Bhubaneswar.
- Jayaram, K.C. 1999. *The Freshwater fishes of the Indian Region*. Narendra Publishing House, Delhi. pp xxvii + 551.
- Sen, N. 1995. State Fauna Series 4. Fauna of Meghalaya (Pisces), Part I. Vertebrates pp.483-606 (Published by ZSI, Calcutta).
- Smith, M.A. 1935. *Fauna of British India, including Ceylon and Burma*. Reptilia and Amphibia, vol. 2. Sauria, pp. 440, London (Taylor & Francis)
- Smith, M.A. 1943. *Fauna of British India, Ceylon and Burma, including the whole of India-Chinese sub-region*. Reptilia and Amphibia. III (Serpentes). pp. 583. London (Taylor & Francis).
- State Fauna Series 4. *Fauna of Meghalaya*. 1995. Part-1, Veretebrata. pp.1-679.Ed. Director, *Zool. Surv. India*, Kolkata.
- State Fauna Series 4. *Fauna of Meghalaya*. 1995. Part-3, Insecta (Odonata). Pp. 33-154Ed. Director, *Zool. Surv. India*, Kolkata.
- State Fauna Series 4. *Fauna of Meghalaya*. 1995. Part-8, Mollusca. Pp. 1-88. Ed. Director, *Zool. Surv. India*, Kolkata.

- State Fauna Series 4. *Fauna of Meghalaya*. 1999. Part-9, Hirudinea Pp. 455-467. Ed. Director, Zool. Surv. India, Kolkata.
- State Fauna Series 4. *Fauna of Meghalaya*. 1999. Part-9, Cladocera Pp. 469-550. Ed. Director, Zool. Surv. India, Kolkata.



Map showing the location of Saipung Reserved Forest and Narpuh reserved forests.



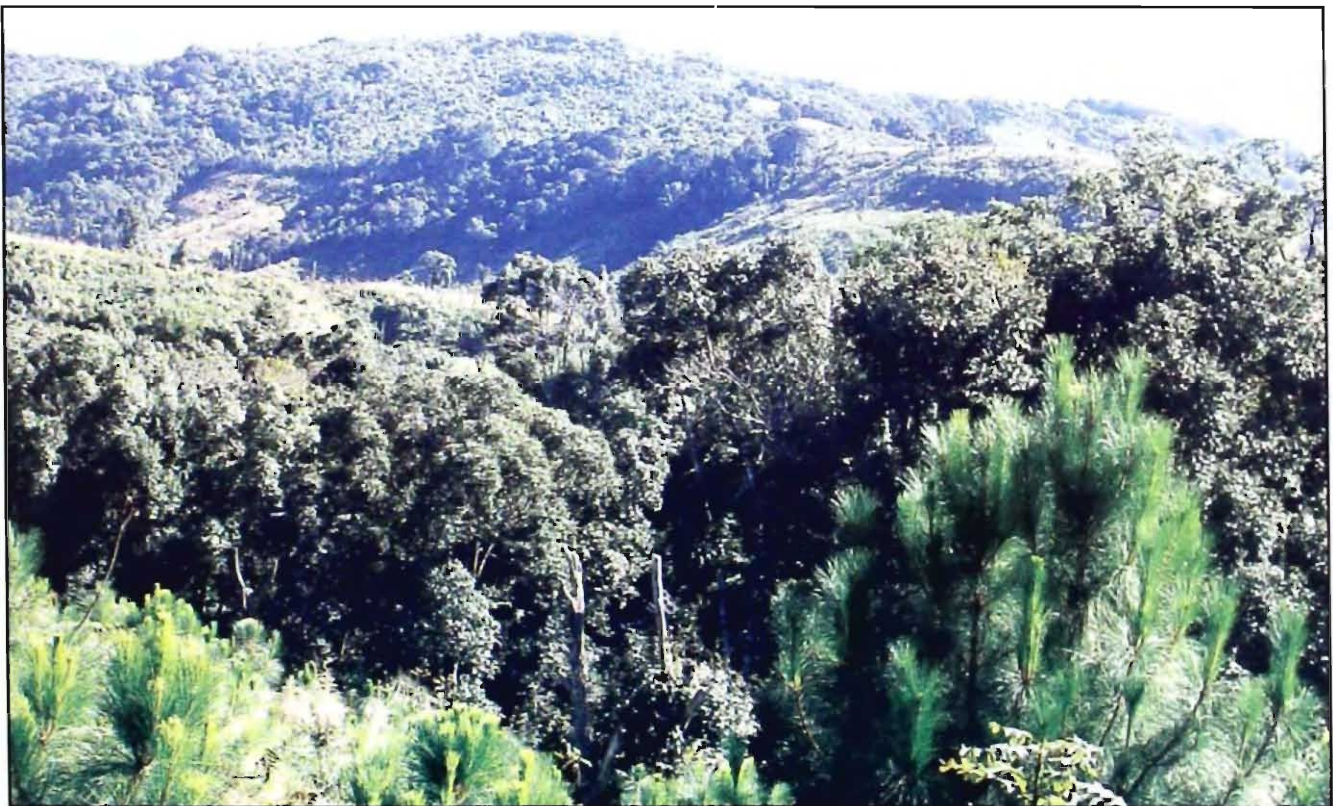
View of forest vegetation in Saipung Forest Reserve



Kopili river at Saibual, Saipung



View of river at Saipung



View of Saipung Forest Reserve



Narpuh Reserve forest Block-I on the Bank of Lubha river



**Dense Narpuh forest on bank of river
NARPUH-RF-BLOCK-II**