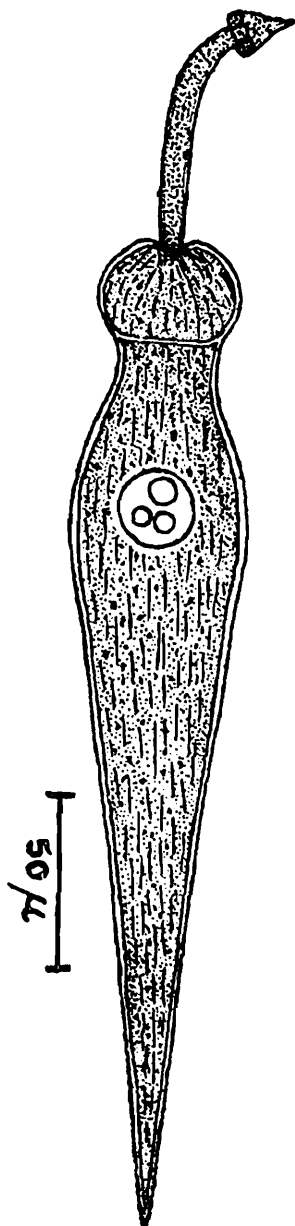


A NEW GREGARINE, *STYLOCEPHALUS INDICUS*, SP. NOV. FROM
A BETTLE.

By P. L. MISRA, Zoological Research Laboratory, University of Lucknow.

Description.—Sporonts solitary, elongate, 320μ to 460μ in length, maximum length 490μ ; epimerite a long style, more than twice the length of the protomerite, with a crown-like hood at its distal end; protomerite subspherical, with prominent longitudinal myonemic fibres, retractile; deutomerite elongate, widest a little behind the septum,



An adult specimen of *Stylocephalus indicus*, sp. nov.

tapers to a sharp pointed extremity; endocyte dense, with big granules; nucleus spherical, 20μ to 26.3μ in diameter, with 1 to 3 nucleoli; L. P. : L. T. : : 1 : 6-9; W. P. : W. D. : : 1 : 1.1-1.4; cysts spherical, beset

with indentations and papillae, 150μ to 182μ in diameter ; spores broad spindle-like in front view, concave in profile, brown, measure $7.5\mu \times 5.8\mu$.

Systematic position.—*Stylocephalus indicus*, sp. nov. (Stylocephalidae, Eugregarinida.)

Habitat.—Mid-gut of *Opatroides (Penthicus) vicinis* Frm. (Coleoptera).

Locality.—Lucknow, U. P., India.

[For literature, material and methods, *vide* Misra, P. L. (1941).—Observations on a new gregarine, *Stylocephalus bahli*, sp. nov. from the alimentary canal of an Indian beetle, *Gonocephalum helopioides* Frm. *Rec. Ind. Mus.*, Vol. XLIII, pp. 43-71.]