

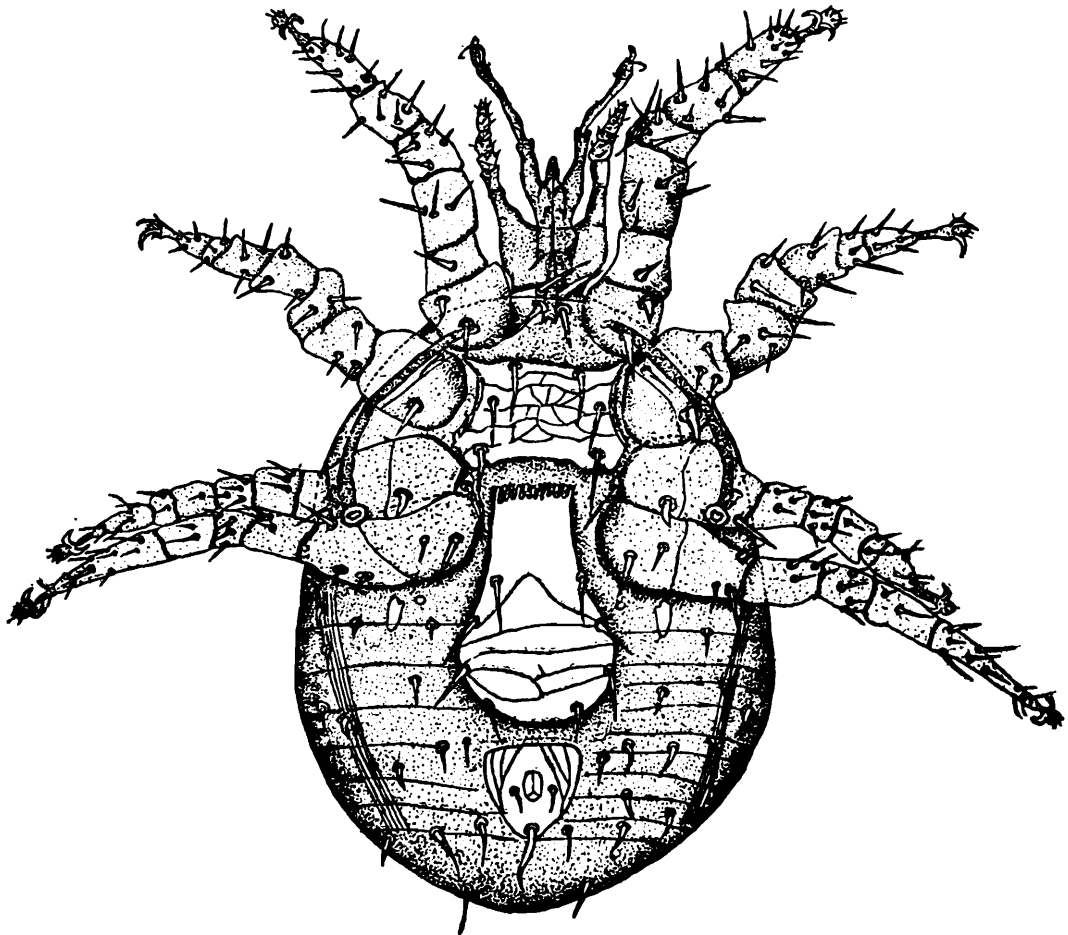
A NEW SPECIES OF *LAELAPS* (LAELAPTIDAE: ACARINA).

By T. B. SINHA, M.Sc., F.Z.S., Jr. N. I. S. Research Fellow, Department of Zoology, University of Allahabad, U. P.

The specimens under study were collected from rats and bandicoot, near Kanglatongli cp., Manipur, Assam, by Dr. M. L. Roonwal in 1945 and were sent to me at my request for study by Dr. S. L. Hora, Director, Zoological Survey of India, Calcutta. I am thankful to Prof. Mehra for providing necessary facilities and for helpful suggestions; to Dr. Hora for the loan of material and to Dr. E. W. Baker of the Division of Insect Identification, U. S. Department of Agriculture, Bureau of Entomology and Plant Quarantine for his kind opinion. My thanks are also due to the authorities of the National Institute of Sciences of India for financing the study.

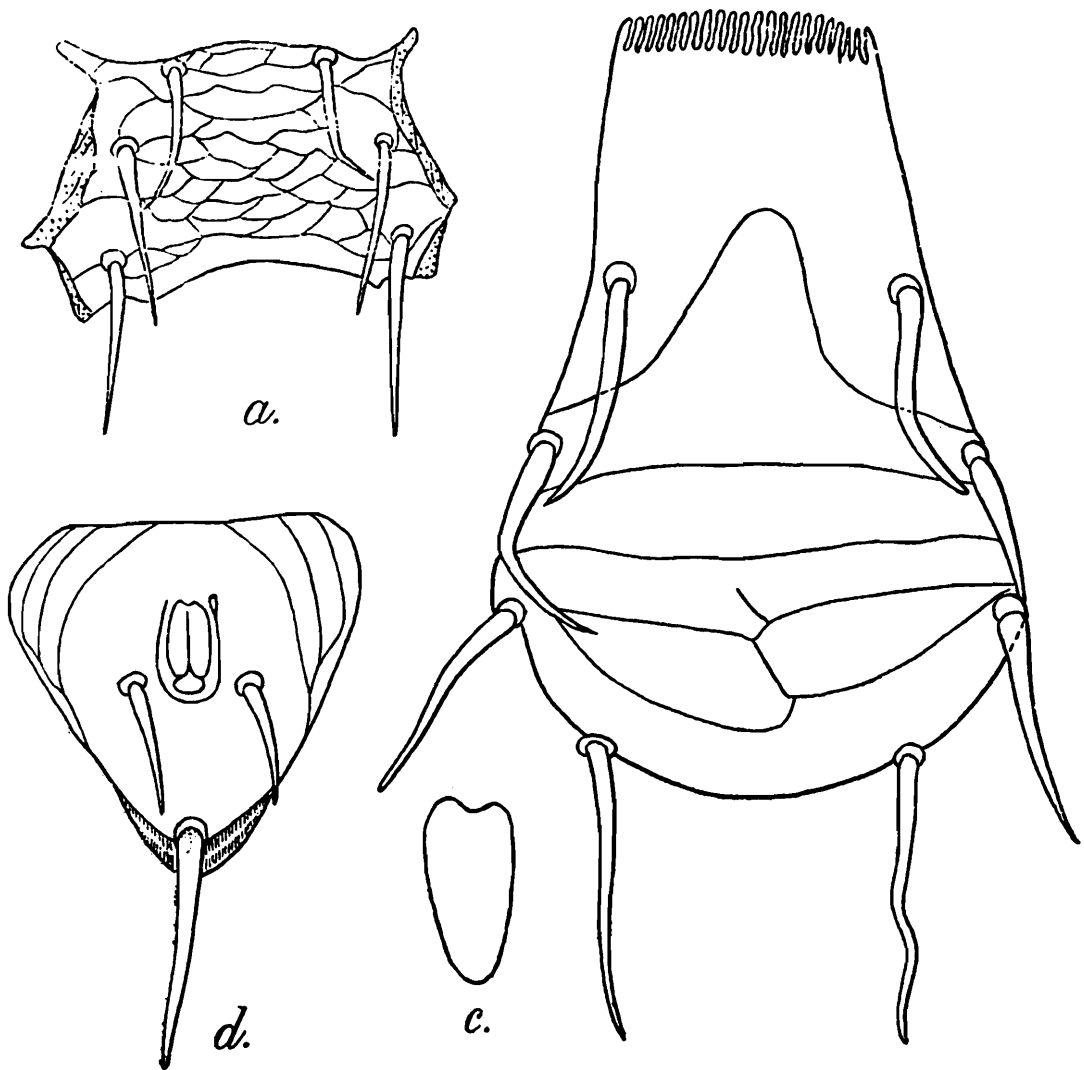
*Laelaps* (*Haemolaelaps*) *manipurensis*, sp. nov.

Body (Text-fig. 1.) is oval and is ornamented with faint transverse markings in addition to the short hairs. The chelicerae are provided



TEXT-FIG. 1 —Ventral view of *Laelaps manipurensis*, sp. n.  $\times$  151.

with teeth and the immovable finger has a minute hair at its base and another much longer one near the tip which is curved apically. The base of the capitulum is beset ventrally with a pair of fine hairs. Peritremal tube extends nearly upto the middle of the basal part of the first coxa. First coxa is provided with a short blunt spine and a longer spine-like hair. Rest of the coxa each is provided with a spine. The spine on coxa III is stouter and shorter than that on coxa IV. All the legs are provided with claws and caruncle. Sternal plate (Text-fig. 2a) is ornamented with reticulate markings (the markings being extremely fine in the middle) and has three pairs of hair, the first pair being located on the anterior margin of the plate. The posterior margin of the plate is



TEXT-FIG. 2.—a. Sternal plate of *Laelaps manipurensis*, sp. n.  $\times$  : 225, b. Genitoventral plate of *Laelaps manipurensis*, sp. n.  $\times$  : 360, c. Coxal platelet of *Laelaps manipurensis*, sp. n.  $\times$  : 720, d. Anal plate of *Laelaps manipurensis*, sp. n.  $\times$  : 360.

broadly concave contrary to the condition in *L. nuttalli* Hirst\* where it is deeply concave. The genitoventral plate (Text-fig. 2b.) is provided with four pairs of hairs. This plate is divided into seven compartments by transverse and oblique markings. The first transverse marking is pyramidal. One of the oblique markings between the third and fourth transverse ones is incomplete. The coxal platelet (Text-fig. 2c.) is

\* Hirst, S. 1915. On some Acarine Parasites of rats. *Bull. Ent. Res.*, VI, P. 183 figs.

wide, elongate comma shaped. The anal plate (Text-fig. 2*d*.) is provided with three hairs and has got linear markings. The posterior or odd hair is much longer than the paired ones. The conical margin of the plate in the vicinity of the odd hair is beautifully ornamented with double rows of very fine hairs.

*Remarks.*—This species is very close to *L. nuttalli* Hirst from which it markedly differs in the following characters:—

- (a) The posterior margin of the sternal plate is broadly concave.
- (b) The genitoventral plate is divided into seven compartments. First transverse marking on the plate is pyramidal and there are two oblique markings, one between the third and fourth and the other between the fourth and fifth markings, the former being incomplete.
- (c) The coxal platelet is wide, elongate comma shaped.

*Measurements in millimetres.*

Slide No.	Body.	Sternum.		Leg.			
		Length.	Breadth.	I	II	III	IV
R2/7-10-45 Holo- type. ♀	0-7106	0-105	0-168	0-4±1	0-3654	0-4047	0-5628
R2/7-10-45 Para- types. ♀	0-6545	0-1008	0-168	0-378	0-3444	0-336	0-5334
♂	0-6171	0-0987	0-168	0-3444	0-3118	0-3024	0-4914
R6/9-10-45 Para- types. ♀	0-6271	0-1008	0-1596	0-41004	0-399	0-3402	0-4596

*Material examined.*—Holotype. Slide No. R-2/7-10-45, from (*Rattus r. bullocki* Roonwal), area near Kanglatongli cp., Manipur, Assam, Dr. M.L. Roonwal, ♀; *Paratypes.* R-2/7-10-45, from (*Rattus r. bullocki* Roonwal), area near Kanglatongli cp., Manipur, Assam, Dr. M. L. Roonwal, ♂ ♀; *Paratype.* Slide No. R-6/9-10-45, from (*Bandicota bengalensis bengalensis*) (Gr. & Hardw.), Kanglatongli cp. site, Manipur, Assam, Dr. M. L. Roonwal, ♀.

All the specimens are deposited in collections of the Zoological Survey of India, Calcutta.