

A NEW SPECIES OF THE GENUS *CENTRORHYNCHUS* LUHE, 1911 (ACANTHOCEPHALA)
FROM INDIA

By

VASANTHA RENGARAJU AND E. N. DAS

Department of Zoology, Sholapur College, Sholapur

(With 1 Text-figure)

INTRODUCTION

A number of birds collected from the outskirts of Sholapur city in Maharashtra were examined for acanthocephalan infection. The present paper deals with a new species of *Centrorhynchus* Luhe, 1911, obtained from the intestine of *Athene brama*.

SYSTEMATIC ACCOUNT

***Centrorhynchus bramae* sp. n.**

(Text-fig. 1.)

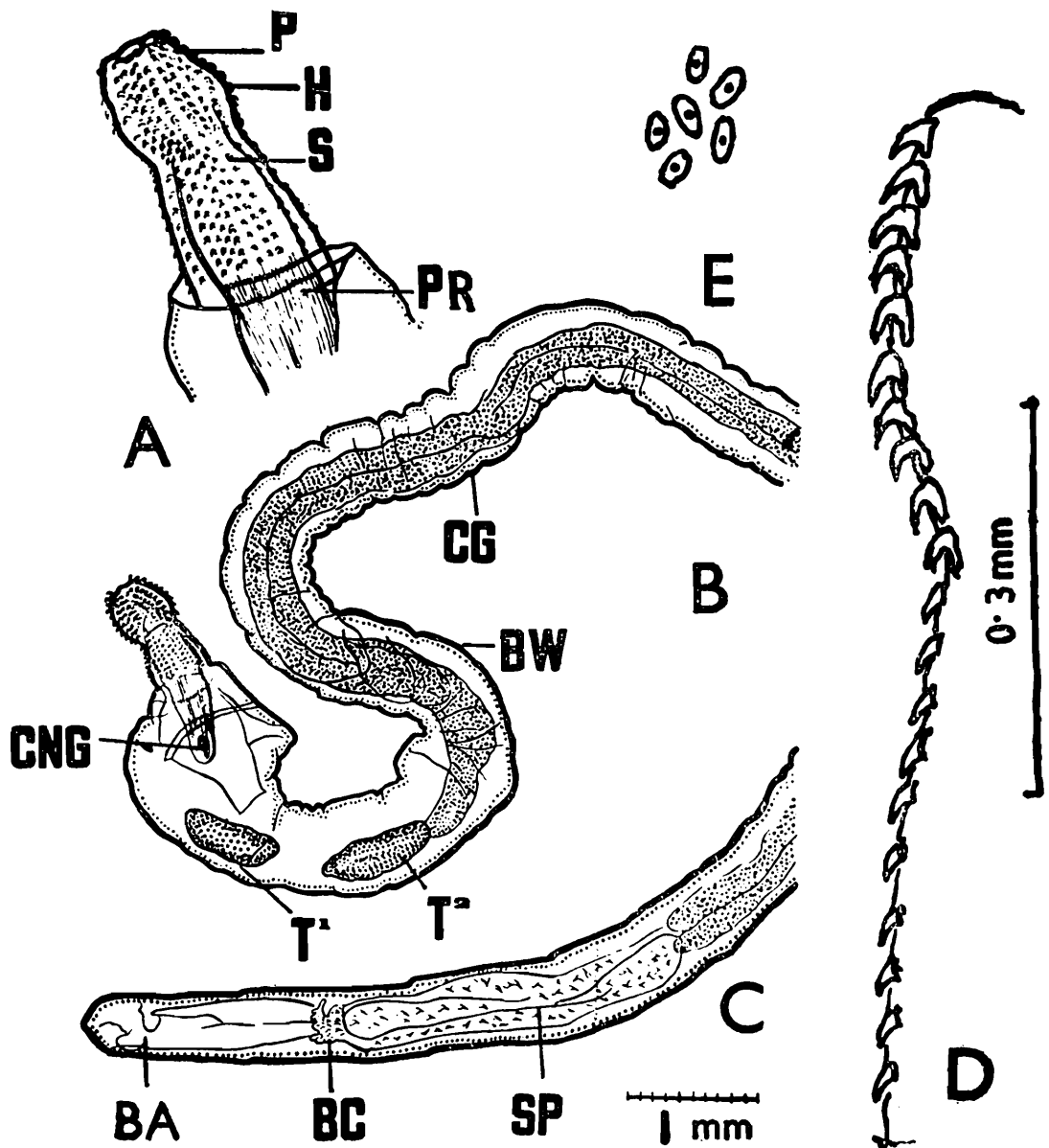
Material and methods : 1 ♂ and 2 ♀ ♀. They were fixed in 70% alcohol and treated with lactophenol.

Diagnosis : 28 longitudinal rows. 10 (anterior rooted) hooks + 10 (Posterior rootless) spines in each row.

Description : Male : Total body length 17 mm., width in middle 0.59 mm. At the terminal end of the body there is a small appendix. Proboscis 0.80 mm. in length, 0.40 mm. in greatest width, 0.30 mm. in diameter at the constriction (where it is divided by insertion of proboscis receptacle into anterior and posterior regions); hooks 0.03-0.04 mm. long, spines 0.015 mm.; proboscis receptacle double walled, 1.0 × 0.40 mm.; lemnisci 0.8 mm. long; anterior testis 0.75 × 0.25 mm., posterior slightly larger 0.95 × 0.32 mm.; 2 cement glands, each 10.4 mm. long; Saeftigen's pouch 2.7 mm. long; bursa 2.0 mm. long.

Female : Larger than male, total body length 19.0 mm., width in middle 0.60 mm.; ova ovate, 0.029 × 0.013 mm.; uterus 1.6 mm. long 0.2 mm. wide; vaginal canal 0.35 mm. long, encircled by two sphincter muscles.

Discussion : The present species is distinguishable from all known *Centrorhynchus* species Yamaguti (1963) and Golvan (1965). It can be easily separated from its nearest allies (Table 1).



Text-fig. 1. *Centrorhynchus bramae* sp. n. A. Proboscis enlarged ; B. Anterior part of the body ; C. Posterior part of the body ; D. Profile of a single longitudinal row of hooks ; E. Ova.

BA—bursa ; BC—bursal cap ; BW—body wall ; CG—cement gland ; CNG—central nerve ganglion ; H—hook ; P—proboscis ; PR—proboscis receptacle ; S—spine ; SP—saefftigen's pouch ; T—testis.

On the basis of possessing 2 cement glands, *Centrorhynchus bramae* sp. n. is placed under the subgenus *Malgacanthus* Golvan, 1965 of *Centrorhynchus* Luhe, 1911.

Type-specimens : Holotype (♂) deposited in the collection of the Department of Zoology, Sholapur College, Sholapur. Registered No. A/C/1-2.

Type-locality : Sholapur, Maharashtra, INDIA.

Type-host : *Athene brama*.

TABLE 1.—Number of rows, hooks and spines in species of *centrorhynchus*.

Species	Longitudinal rows	No. in each row	Hooks & spines in each row
<i>C. conspectus</i> Van			
Cleave et Pratt, 1940	30—32	17—18	...
<i>C. macrorchis</i> Das, 1950	24—28	19	10+9
<i>C. indicus</i> Golvan, 1956	28—30	21—23	12—14+9
<i>C. simplex</i> Meyer, 1933	22—24	24	14+10
<i>C. longicephalus</i> Das, 1950	24—26	21—23	...
<i>C. albidus</i> Meyer, 1933	28—30	20	7+13
<i>C. bramae</i> sp. n.	28	20	10+10

ACKNOWLEDGEMENT

The authors express their gratitude to Sholapur College, for providing necessary laboratory facilities.

SUMMARY

A new acanthocephalan species, *Centrorhynchus bramae*, is described and compared with its close allies. Its host is a raptorial bird, *Athene brama*, collected from Sholapur.

REFERENCES

- DAS, E. N. 1950. On some new species of the genus *Centrorhynchus* Luhe, 1911, *Rec. Indian Mus.* **47** (3-4) ; 291-301.
- DAS, E. N. 1950. On some juvenile forms of Acanthocephala of the genus *Centrorhynchus* from India. *Indian J. Helminth.*, **2** (1) : 49-56.
- GOLVAN, Y. J. 1965. Acanthocephales de Madagascar recoltés par E. R. Brygoo (Première note). *Annls Parasit. hum. compar.*, **40** (3) : 303-316.
- MEYER, A. 1933. "Acanthocephala. Bronn's Klassen und Ordnungen d. Tierreichs" **4**, Abt. 2, Buch 2, Lief 2 ; 335-528, Akad. Verlag., Leipzig.
- VAN CLEAVE, H. J. and PRATT, E. M. 1940. A new species of the genus *Centrorhynchus* (Acanthocephala) from the Barred owl. *J. Parasit.*, **26** (4) ; 297-300.
- YAMAGUTI, S. 1963. Acanthocephala. *Systema Helminthum*, **5** : 423 pp. Interscience Publ., John Wiley, N. Y. & Lond.