

**THE INDIAN SPECIES OF THE GENUS *ASIORESTIA* JACOBSON
(COLEOPTERA : CHRYSOMELIDAE : ALTICINAE) WITH
DESCRIPTIONS OF THREE NEW SPECIES**

C.R. BASU

*Zoological Survey of India, New Alipore, M-Block
Calcutta—700 053,*

Jacobson (1925) described the Genus *Asiorestia* (Type : *A kozhantshikovi* Jacobson) from Jukutskningrad. Scherer (1969) described a new species from India and transferred another one species from the genus *Crepidodera* to *Asiorestia* from India. So far, thus two species have been reported from India. In the present paper three more species are described as new to science. Number of Indian species of *Asiorestia* Jacobson now comes to five. All the specimens included in this paper are deposited in the Zoological Survey of India, Calcutta.

Key to the Indian species of *Asiorestia*

1. Species apterous ; Red-brown to dark chest nut brown with elypeus and labrum dark ; clypeal carina broad ; antennal calli feeble ; elytral punctation strong and bold, ante-basal transverse impression on pronotum feeble only with one or two rows of fine puncturen *danahina* n.sp.
Species winged 2
2. Species metallic blue-black, parallel-sided, elytra almost equal with or very slightly broader than prothorax ; elytral punctures strong and arranged in regular rows. *arunachalensis* n.sp.
Species not metallic. 3
3. Elytral punctures extremely fine, each puncture surrounded by a dark ring ; red-brown with the legs, lebrum, elypous and seven to eight apical antennal segments black ; size 4-5 mm. *schenklingi* (Csiki)
Elytral punctures fine but strongly impressed ; red-brown with labrum, apical part of clypes and hind femora black ; size 3.00 mm. *manipurensis* n.sp.

(*Asiorestia naini* Scherer is not included in the key as the material was not seen).

1. *Asiorestia schenklingi* (Csiki)

(Figs. 1—4)

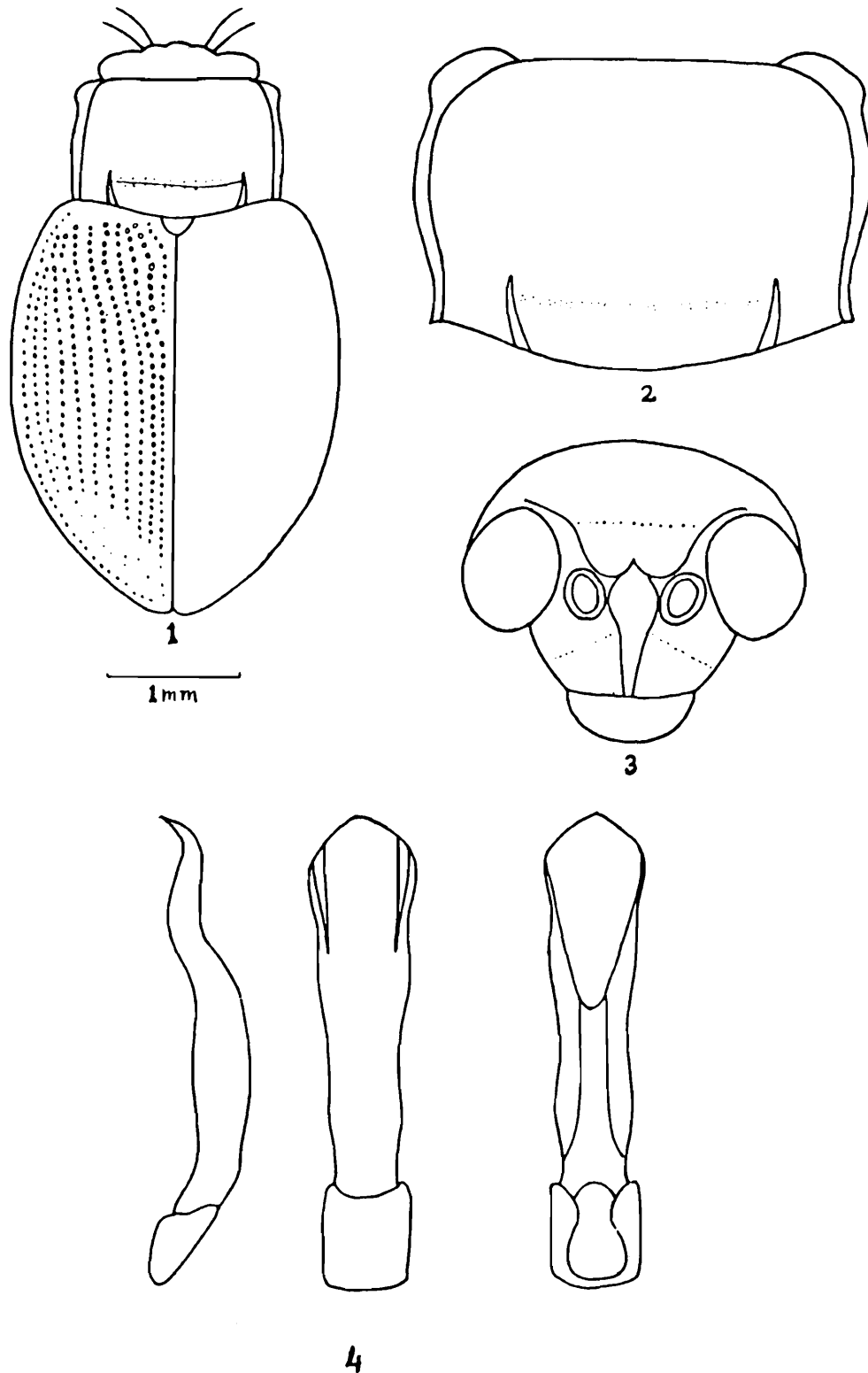
1935. *Crepidodera sublaevis* Chen, *Bull. Soc. Ent. France* 40 : 76.

1940. *Crepidodera schenklingi* Csiki, In Junk, *Col. Cat.* 166 : 298 (nom. nov. pro *C. sublaevis* Motsch.).

1969. *Asiorestia schenklingi* : Scherer, *Pacif. Ins. Monogr.* 22 : 134.

Specimens examined : 4 ex., Sukia Pokri, Darjeeling Dist., West Bengal, 3.x.1974, H.K. Bhowmik & A.R. Bhaumik coll. ; 1 ex, Jorpokri, 2210 m., Darjeeling dist., West Bengal, 23.v.1971, A.R. Bhaumik coll.

Distribution : India : West Bengal and Sikkim.



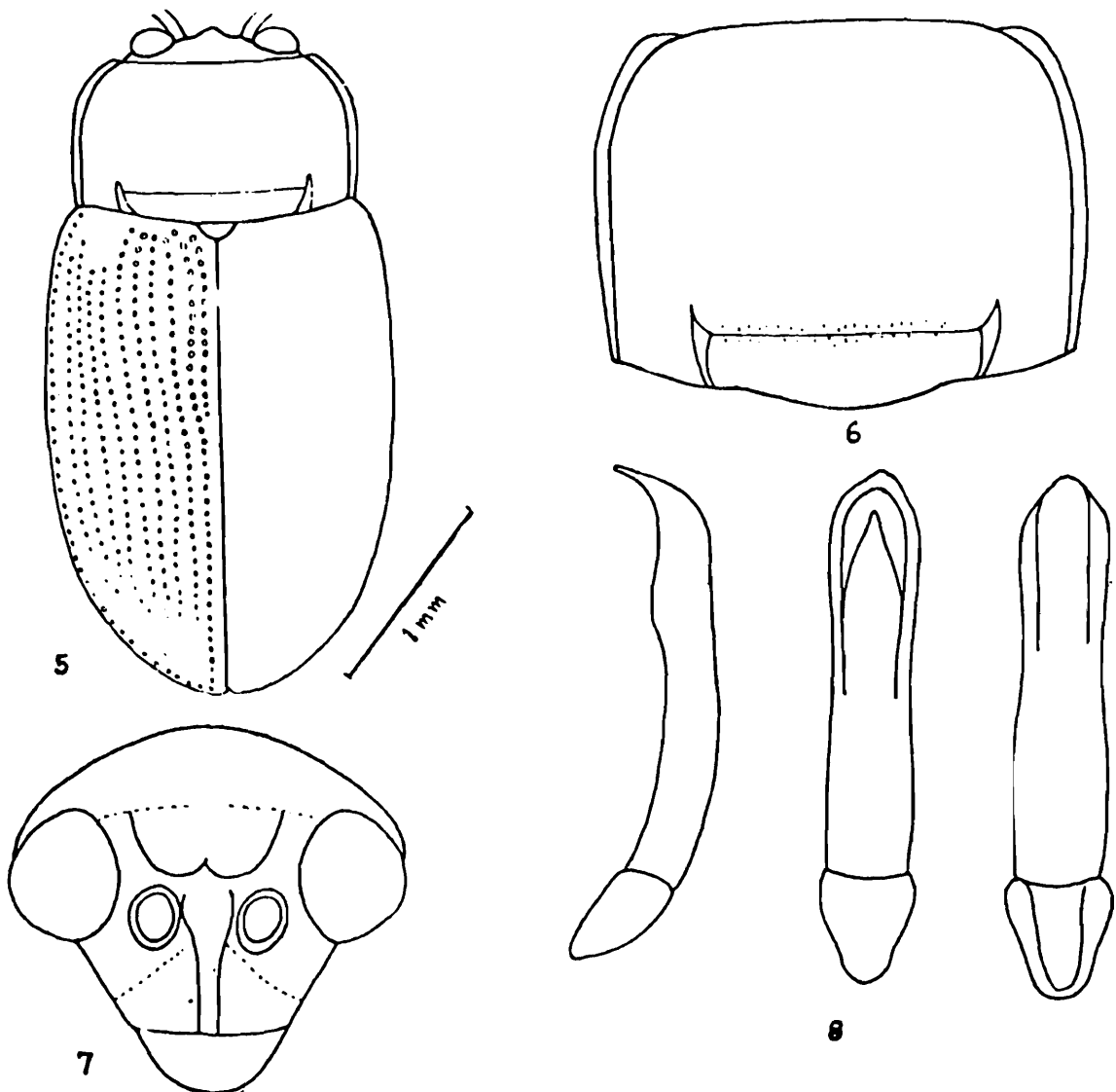
Figs. 1-4. *Asiorestia schenklinsi* (Csiki), 1. Dorsal view, 2. Prothorax, 3. Front view of head, 4. Ventral-Dorsal and Lateral view of Aedeagus.

2. *Asiolestia arunachalensis* n.sp.

(Figs. 5-8)

Oblong, parallel, metallic blue-black with violaceous tinge, antennae pitch brown, ventral side darker with the basal part of femora and coxae red brown.

Head (fig. 7) impunctate with a few strong punctures on frons, antennal calli prominent, contiguous and distinctly separated in front by a deep impression, clypeal carina raised, convex and gradually narrowed towards front margin. Antennae reaching beyond the middle of the body, segment 1 long and thick, segment 2 small, segment 3 longer than segment 2, segment 4 longer than segment 3, segment 5-10 subequal and each longer than segment 4, segment 11 longest. *Prothorax* (fig. 6) broader than long, anterior margin straight, posterior margin sinuated and lateral margins rounded, anterior angles thickened, posterior angles obtuse, surface strongly convex in front, finely punctate, punctation dense at the middle and sparse at sides, ante-basal transverse impression distinct and strong and with sparse punctures. *Scutellum* black, triangular with its apex rounded, surface smooth and impunctate. *Elytra* with eleven regular rows of strong punctures including scutellar and marginal ones, interstices flat, slightly convex at sides and with minute punctures. *Aedeagus* as figured (fig. 8).



Figs. 5-8. *Asiolestia arunachalensis* n.sp.. 5. Dorsal view, 6. Prothorax 7. front view of head, 8. Ventral, Dorsal and lateral views of Aedeagus.

Measurements of holotype : Length 3.60 mm. length of antennae 2.50 mm. width of head across eyes 0.90 mm., length of prothorax 1.00 mm., width of prothorax across middle 1.25 mm., length of elytra 2.75 mm. and width of elytra across middle 1.70 mm.

Holotype ♂, INDIA : ARUNACHAL PRADESH : Subansiri Dist., Hopoli, 1585 m, 15.v. 1966, A.N.T. Joseph coll. ; *Paratypes* 26 ♂♂ ♀♀, same as holotype, 8 ♂♂ ♀♀, Kameng Dist., Tawang, 3200 m., 27.v. 1966, A.N.T. Joseph coll.

Remarks : This species is near *A. tonkinensis* (Chen) but can be easily separated in having the following characters : Elytral punctures distinctly arranged in rows ; antennae pitch brown with its segment 2 shorter than segment 3, segment 3 shorter than segment 4 ; dorsal surface metallic blue-black with violaceous tinge ; basal part of femora and coxae red brown.

3. *Asiorestia manipurensis* n.sp.

(Figs. 9-12)

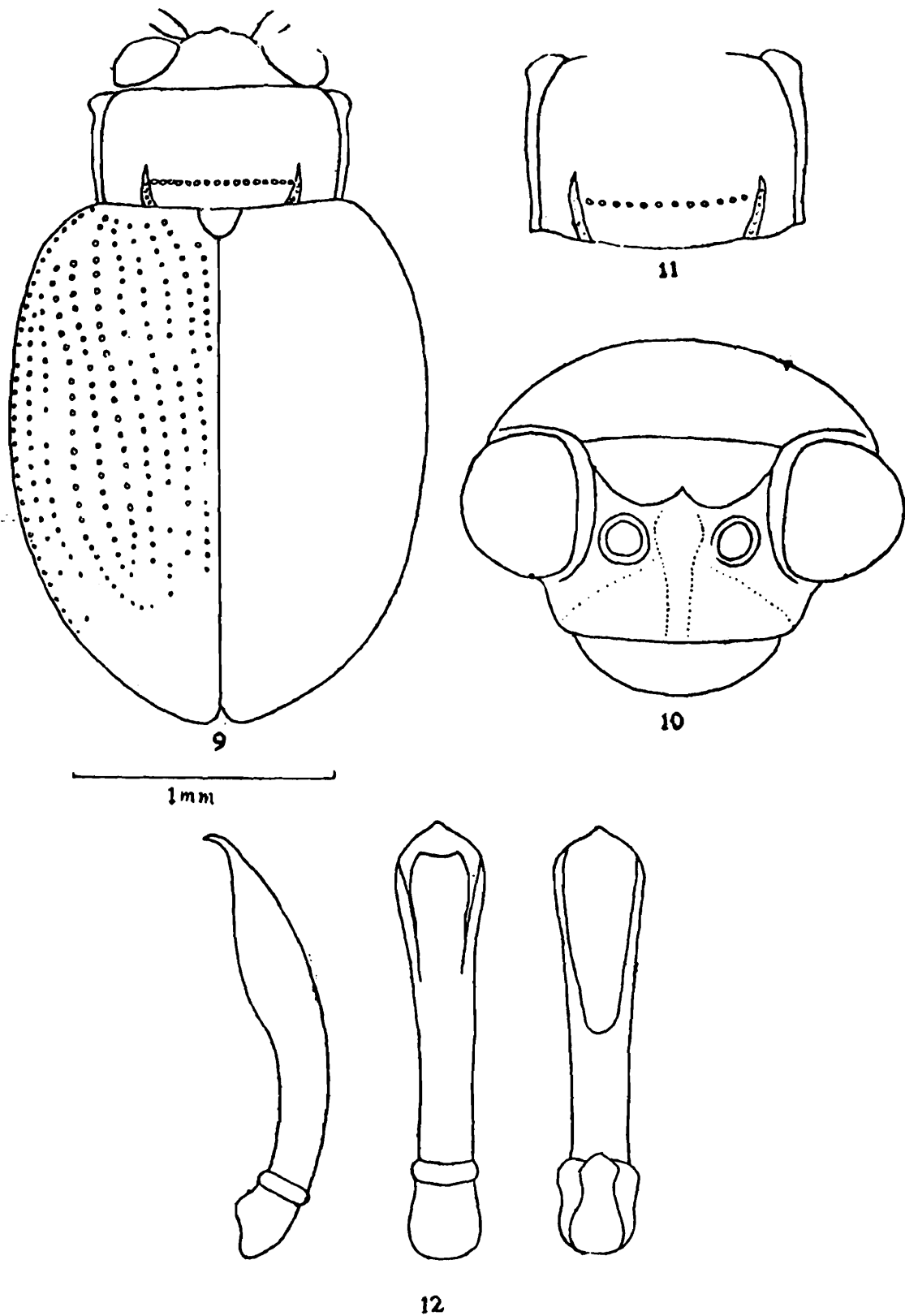
Ovate, red brown with apical part of clypeus and hind femora black.

Head (fig. 10) impunctate, antennal calli distinct, contiguous and separated from vertex by a distinct transverse impression, clypeal carina raised and continued to front margin. Antennae reaching beyond middle of elytra, segment 1 long and thick, segment 2 small, rounded and half as long as segment 1, segment 3 longer than segment 2 and equal to segment 4, segments 5-11 subequal, each longer than segment 4. *Prothorax* (fig. 11) one and half times broader than long, front margin straight, basal margin sinuated, lateral margins rounded at middle, front angles produced, posterior angles obtuse ; pronotum smooth and impunctate except for a row of fine punctures along antebasal transverse impression, latter distinct and curved. *Scutellum* triangular, rounded apically, smooth and impunctate. *Elytra* broader at base than prothorax, each elytron with eleven rows of punctures including scutellar and marginal ones, punctation fine, interstices flat and finely punctate. First tarsal segments of anterior two legs strongly dilated in male. Female unknown *Aedeagus* (fig. 12) as figured.

Measurements of holotype : Length 3.00 mm., length of antennae 2.30 mm., width of head across eyes 0.80 mm., length of prothorax 0.85 mm., width of prothorax across middle 1.15 mm., length of elytra 2.25 mm. and width of elytra across middle 1.75 mm.

Holotype ♂, INDIA : MANIPUR : Ukhrul, Horticultural Farm, 30.ix. 1975, M.S. Shishodea coll.

Remarks : This species to close is *A. naini* Scherer but can be easily separated in having the following characters : Red brown colour with its labrum and hind femora black ; antennae completely redbrown and long, reaching beyond the middle of elytra ; interstices between the rows of punctures flat and minutely punctate ; size smaller (3.00 mm.).



Figs. 9-12. *Asiorestia lanipurensis* n.sp., 9. Dorsal view, 10. Front view of head, 11. Prothorax, 12. Ventral, Dorsal and Lateral view of Aedeagus.

4. ***Asiorestia danahina*** n.sp.
(figs. 13-16)

Ovate, redbrown to dark chest nut brown, antennae, legs and ventral side light brown to dark brown.

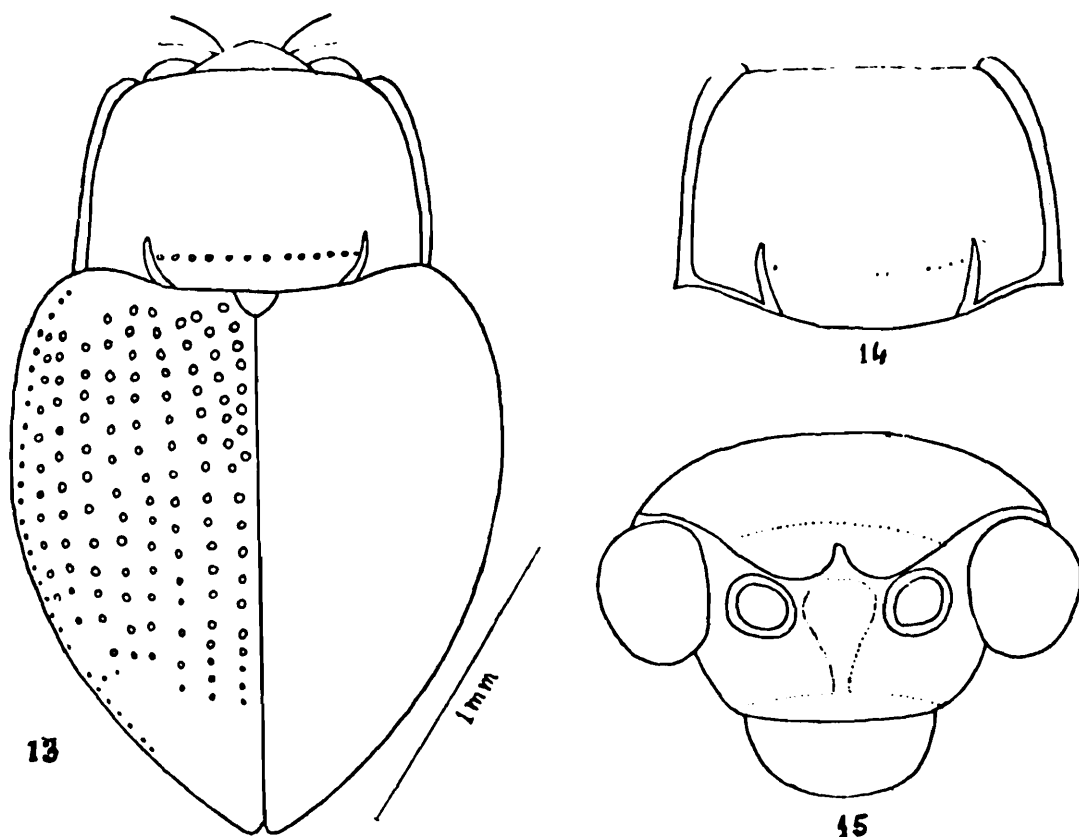
Head (fig. 14) impunctate, antennal calli distinct, contiguous and separated

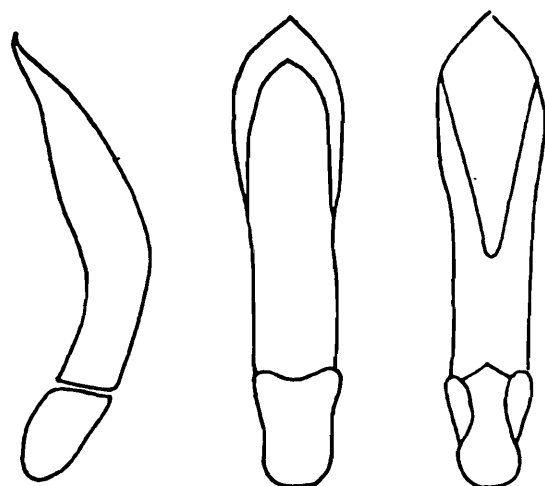
behind by an indistinct transverse depression, clypeal carina broad, raised, convex and gradually narrowed towards front margin. Antennae reaching beyond the shoulder, segment 1 long and thick, segment 2 small and rounded, segment 3 longer than segment 2, segment 4 equal to segment 3, segments 5-11 gradually thickened, subequal and each longer than segment 4. *Prothorax* (fig. 15) one and half times broader than long, narrowed anteriorly, front margin straight, basal margin rounded, sides gently rounded, anterior angles rounded, posteriors obtuse, pronotum almost impunctate, under high magnification very finely punctate, ante-basal transverse impression indistinct and with a row of punctures. *Scutellum* triangular, apex broadly rounded and impunctate. *Elytra* broad at base and pointed apically, each elytron with eleven rows of punctures including scutellar and marginal ones, interstices flat, impunctate and slightly convex at sides. *Wings* absent in both sexes. First tarsal segments of anterior two pairs of legs strongly dilated in male. *Aedeagus* as figured (fig. 16).

Measurements of holotype : Length 2.25 mm., length of antennae 1.60 mm., width of head across eyes 0.65 mm., length of prothorax 0.90 mm., width of prothorax across middle 1.10 mm., length of elytra 2.10 mm. and width of elytra across middle 1.50 mm.

Holotype ♂, INDIA : HIMACHAL PRADESH : Mashobra, 26.vi. 1975, T. Sengupta coll. ; *Paratypes* 2 ♂♂ 8 ♀♀, locality same as holotype.

Remarks : This species is perhaps the unique apterous representative of the genus *Asiolestia* from India. Considering the size and colour of the species, it may resemble *A. naini* Scherer. But it can be easily separated by the following characters Apterous form, elytra apically pointed and its punctation stronger ; prothorax narrowed anteriorly with its sides gently rounded, ante-basal transverse impression straight and indistinct.





16

Figs. 13-16. *Asiorestia danahina* n.sp.,
 13. Dorsal view,
 14. Front view of head,
 15. Prothorax,
 16. Ventral, Dorsal and Lateral view
 of Aedeagus.

5. *Asiorestia naini* Scherer

1969. *Asiorestia naini* Scherer, *Pacif. Ins. Monogr.*, **22** : 134-135.

Material : Not seen

Distribution : India : Uttar Pradesh.

SUMMARY

The present paper deals with five species of the genus *Asiorestia* Jacobson from India. Of these, three species namely *A. arunachalensis*, *A. manipurensis* and *A. danahina* are described as new to science. A key to the four Indian species of the genus is also provided.

ACKNOWLEDGEMENTS

The author is grateful to the Director, Zoological Survey of India, for providing laboratory facilities during this work. The author is also thankful to Dr. T. Sengupta and Dr. Shyamrup Biswas, Z.S.I., for their cooperation and help.

REFERENCES

- Jacobson, G. 1925. Chrysomelidae (Coleoptera) palaeartici novi vel parum cogniti. V-VIII. *Ann. Mus. Zool. Acad. Leningrad*, **26** : 231-276.
- Scherer, G. 1969. Die Alticinae Des Indischen Subkontinentes (Coleoptera—Chrysomelidae). *Pac. Ins. Monogr.*, **22** : 1-251.