

A NEW SPECIES OF SPIDER OF THE GENUS *TIBELLUS SIMON* (ARANEARE : PHILODROMIDAE) FROM MADHYA PRADESH, INDIA.

U. A. GAJBE and *PAWAN GAJBE

Zoological Survey of India, Central Regional Station, Jabalpur

The spiders of the family Philodromidae are little known in Indian Fauna. The genus *Tibellus* was established by Simon in 1875 with the Type-species *Tibellus oblongus* (Walckenaer). Tikader (1980) redescribed and reillustrated four species and described two new species of the genus *Tibellus* from different parts of India.

While studying the spider collection collected by the second author from different areas of Jabalpur city, we came across a new species of the genus *Tibellus* which is described here.

The type specimen will in due course be deposited in the National Collection, Zoological Survey of India, Calcutta.

***Tibellus jabalpurensis* sp. nov.**

General : Cephalothorax and legs brownish-green, abdomen light brownish green. Total length 9.0 mm. Carapace 3.60 mm. long, 2.30 mm. wide; abdomen 5.70 mm. long, 1.90 mm. wide.

Cephalothorax : Longer than wide, sparsely spined, with two longitudinal broad dark brown bands extending from postero-lateral eyes to the base of cephalothorax and two broad dark brown bands extending from postero-median eyes to the base of cephalothorax as in fig. 1. Clypeus medium, margin of clypeus with seven spines directed forward. Anterior row of eyes closed, recurved, anterior four eyes and posterior two median eyes form a hexagonal area, the postero-lateral eyes largest and remote from other eyes. Sternum heart-shaped, pointed behind, clothed with fine hairs. Legs long, spined, II and IV pairs of legs long but I and II longer and more robust than IV, tibiae and metatarsi of I and II with two pairs of ventral spines; well developed claw-tufts and scopulae present on tarsi and extended to the end of metatarsi.

Abdomen : Longer than wide, cylindrical, clothed with spines, narrow behind, slightly overlapping the posterior region of cephalothorax in front, irregular tufts of black hairs on the dorsum; one mid-dorsal and two lateral deep brown bands extending from the anterior end of abdomen to the posterior end of abdomen. Ventral side slightly lighter than the dorsal, provided with mid-ventral broad deep brown longitudinal band starting from epigastric furrow to the base of spinnerets. Epigyne as in fig. 2. Internal genitalia as in fig. 3.

Type-specimen : Holotype female in spirit, other details as above.

* Government Autonomous Science College, Jabalpur.

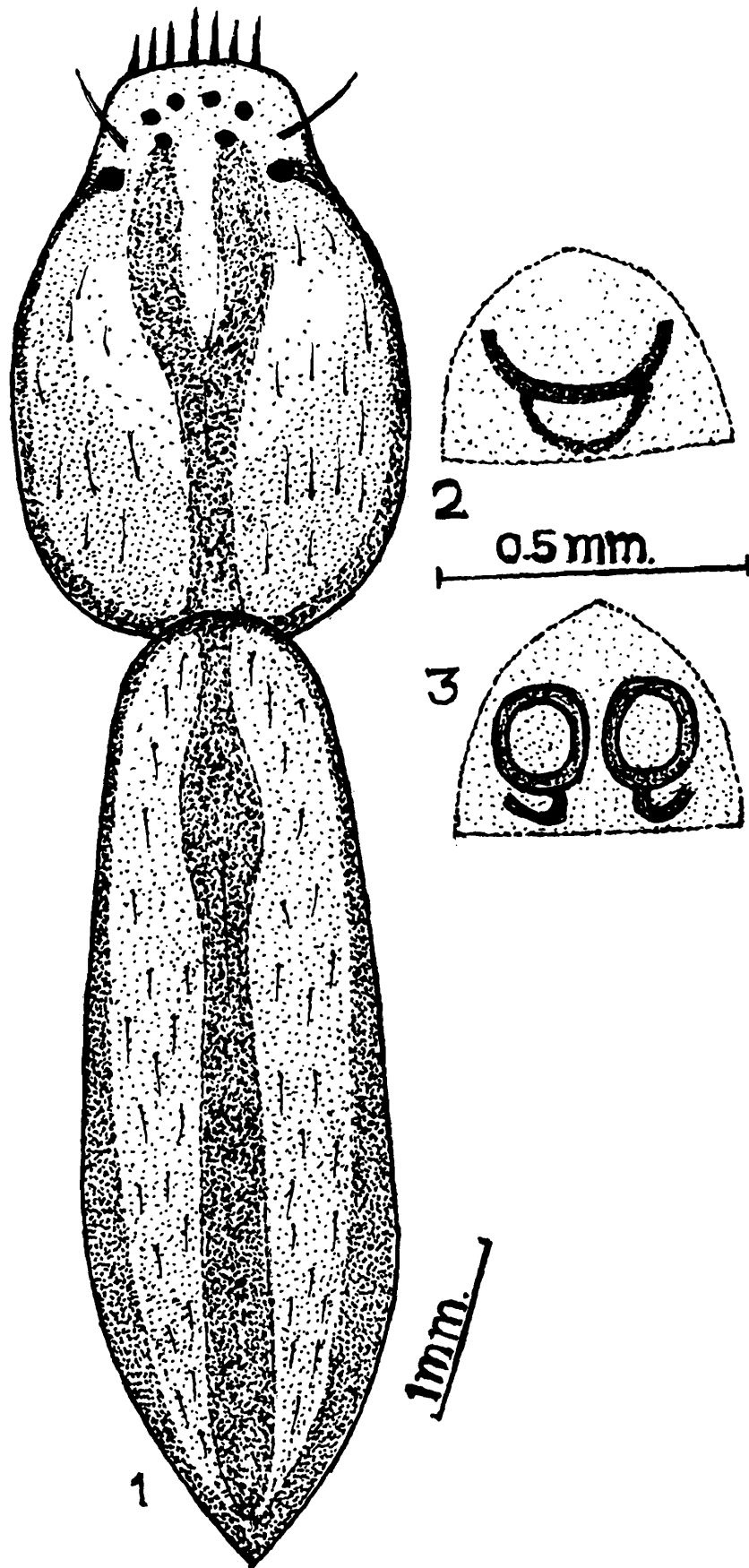


Fig. 1-3. *Tibellus jabalpurentis* sp. nov.
1. Dorsal view of female, legs omitted; 2. Epigyne; 3. Internal genitalia.

Type-locality : Vijaya Nagar, Jabalpur, M.P. Coll. Pawan Gajbe, 14.10.1997.

This species resembles *Tibellus chaturshingi* Tikader but differs from it as follows : (i) Cephalothorax provided with two lateral and two mid-dorsal deep brown bands but in *T. chaturshingi* cephalothorax provided with two lateral bands. (ii) Abdomen provided with two and one lateral and mid-dorsal deep brown bands starting from anterior end of abdomen to the posterior end but in *T. chaturshingi* abdomen dorsally provided with two longitudinal broad light brown bands extending from the lateral sides of abdomen and join together at the posterior end of abdomen. (iii) Abdomen ventrally provided with deep brown broad band extending from epigastric furrow to the base of spinnerets but in *T. chaturshingi* abdomen provided ventrally with four longitudinal light brown bands. (iv) Epigyne also structurally different.

ACKNOWLEDGEMENTS

The authors are grateful to Dr. J. R. B. Alfred, Director, Zoological Survey of India, Calcutta, for facilities and to Shri K. Vinod, Stenographer, of this station, for typing the manuscript.

REFERENCES

Tikader, B. K. 1980 *Fauna of India, Spiders*, 1 (1) : 1-245.