

## Short Communication

### NEW RECORD OF *BOTHYNOGRIA RUFICOLLIS* (COLEOPTERA: TENEBRIONIDAE) FROM INDIA

#### INTRODUCTION

The Lagriine genus *Bothynogria* was named by Borchmann (1915) and 06 species has been described till date. A perusal of literature reveals that three species of *Bothynogria* namely *himalayana* Borchmann, 1936, *bicolor* (Kollar and Redtenbacher, 1848) and *meghalayana* (Merkl, 1990) were reported from Nilgiri Hills, Tamil Nadu; Sikkim and West Bengal (Darjeeling-Lebong and Lopchu) and Meghalaya respectively. The occurrence of the 4<sup>th</sup> species *Bothynogria ruficollis* from Uttarakhand state increases the number of Lagriine species in India and extends its distribution from eastwards and southwards to western Himalayan ecosystem.

#### SYSTEMATIC POSITION

Order COLEOPTERA

Family TENEBRIONIDAE

Subfamily LAGRIINAE Latreille, 1825 (1820)

Tribe LAGRIINI Latreille, 1825 (1820)

Genus *Bothynogria* Borchmann, 1915.

Species *ruficollis* (Hope, 1831)

*Lagria ruficollis* Hope, 1831: 32; Borchmann, 1910: 13; 1915: 86, 87; Chujo, 1966: 549.

*Cerogria ruficollis*: Borchmann, 1936: 137.

**Diagnostic characters:** Body elongate, brownish red, elytra with sutural border sometimes

infusate. Antennae relatively long, 8<sup>th</sup> and 9<sup>th</sup> segments distinctly elongate, and last segment longest. Pronotum slightly wider than long, impression shallow, punctures large. Elytra distinctly flattened, hardly widening posteriorly, punctures deeply impressed, elytral pubescence sparse, short reclinate. Legs strong, middle and hind legs with tooth like structure in *B. ruficollis*. The inner edge of the middle leg with denticles, prominent tooth last in the series.



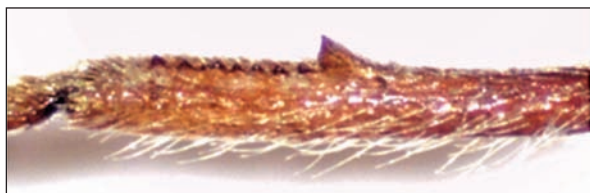
*Bothynogria ruficollis* (Hope, 1831)



Elytra showing punctation and Pubescence



Last antennal segment



Right hindleg showing the presence of tooth



Right middle leg showing the presence of tooth

*Material examined:* Uttarakhand, Trijugi Narayan, Rudra Prayag, 1.vii.2004, (1ex.) coll.: S.K. Chakraborty and party; deposited in NZC, Zoological Survey of India, Kolkata. Reg. No. 19967/ H4A.

*Distribution:* INDIA; (Uttarakhand-Rudra Prayag), Nepal (Merkl, 1990).

*Remarks:* In case of *B. himalayana*, elytral pubescence relatively long and semierect. In *B. bicolor*, the inner edge of the middle leg with few denticles having prominent tooth first in the series. These characters differentiate the *B. ruficollis* from the these two related species. The report of *Bothynogria ruficollis* (Hope, 1831) constitutes the first record from India.

#### ACKNOWLEDGEMENT

I am thankful to the Director, Zoological Survey of India, Kolkata for the facilities. I am indebted to Dr. Kailash Chandra, Addl. Director for his valuable suggestions in preparing the manuscript.

#### REFERENCES

- Borchmann, F. R. (1915): Die Lagriinae (Unterfamilie der Lagriidae). *Arch.Naturg.* **81** A (6): 46-186.  
 Merkl, O. (1990): A review of *Bothynogria* Borchmann (Coleoptera, Tenebrionidae: Lagriini). *Acta Zool. Hungarica*, **36**(3) (3-4): pp. 279-294.

V.D. HEGDE\* AND B. LAL

Zoological Survey of India, M-Block, New Alipore, Kolkata-700 053

\*Corresponding Author's E-mail: hegde67@yahoo.co.in