

## SHORT COMMUNICATION

*Bull. zool. Surv. India*, 2 (2&3) : 229-231, 1980

### RECORD OF *STIGMATOGOBIOUS HOEVENII* (BLEEKER) FROM THE GANGETIC DELTA, WEST BENGAL, WITH A KEY TO THE INDIAN SPECIES OF *STIGMATOGOBIOUS* (PISCES : GOBIIDAE)

*Stigmatogobius hoevenii* (Bleeker, 1851) is known so far from long Island, Middle Andamans (Herre, 1939 : 348). A recent collection of gobiid fishes from the Gangetic delta in West Bengal contained three well preserved female specimens of *S. hoevenii*. The present record of this species from West Bengal thus extends its distributional range to the Indian mainland.

Eight species of the genus *Stigmatogobius*\* Bleeker, 1874 are known from Indian waters : *S. sadanundio* (Hamilton, 1822), *S. poicilosoma* (Bleeker, 1849), *S. hoevenii* (Bleeker, 1851), *S. oligactis* (Bleeker, 1875), *S. römeri* Weber, 1913, *S. minima* (Hora, 1923), *S. yanamensis* Visweswara Rao, 1971 and *S. micrognathus* Visweswara Rao, 1971.

A brief description of *S. hoevenii* with a revised key to the Indian species of *Stigmatogobius* is given.

#### *Stigmatogobius hoevenii* (Bleeker, 1851) (Fig. 1)

*Gobius hoevenii* Bleeker, 1851, *Natuurk. Tijdschr. Ned. Indië*, 2 : 426 [type locality : Sambas river, Borneo ; holotype in Rijksmuseum van Natuurlijke Historie, Leiden].

*Stigmatogobius hoevenii* (Bleeker) : Koumans, 1941, *Mem. Indian Mus.*, 13 (3) : 260 (revs.).

*Material* : Three ♀ specimens, 15.8-20.0 mm standard length ; Edward's creek, Fraserganj (West Bengal) in the Gangetic delta ; Sept. 8, 1974 ; coll. T, K. Chatterjee ; Z. S. I. Regd. No. F 7256/2.

*Description* :  $D_1$  VI,  $D_2$  I, 7 ; V I, 5 ; A I, 7 ; P .6 ; C 15 ; scale rows in lateral series 31-32, in transverse series 9-10, predorsal scales 10-11. Body elongated, somewhat compressed, head depressed. Depth of body 21.9-22.9, length of head 25.6-32.2 ; both in percentage of standard length. Eye diameter 25.3-28.4 percent head length. Pit organs in three longitudinal lines on the pre-opercular region and two transverse and one longitudinal lines on the operculum (fig. 1B). Four nasal sensory canal-pores (fig. 1B). Scales ctenoid, of head, nape and breast cycloid. Pre-operculum naked, operculum scaled. Tip of tongue rounded. Teeth in jaws multiserial, close-set, inner row in lower jaw slightly enlarged ; pre-vomer and palatine toothless.

Colour in alcohol : Yellowish brown, head and body with nine deep brown transverse

\**Gobius javanicus* Bleeker, 1856, heretofore treated under genus *Stigmatogobius* is placed under genus *Pseudogobius* (Bleeker) Popta, 1922 (Akihito and Meguro, 1975).

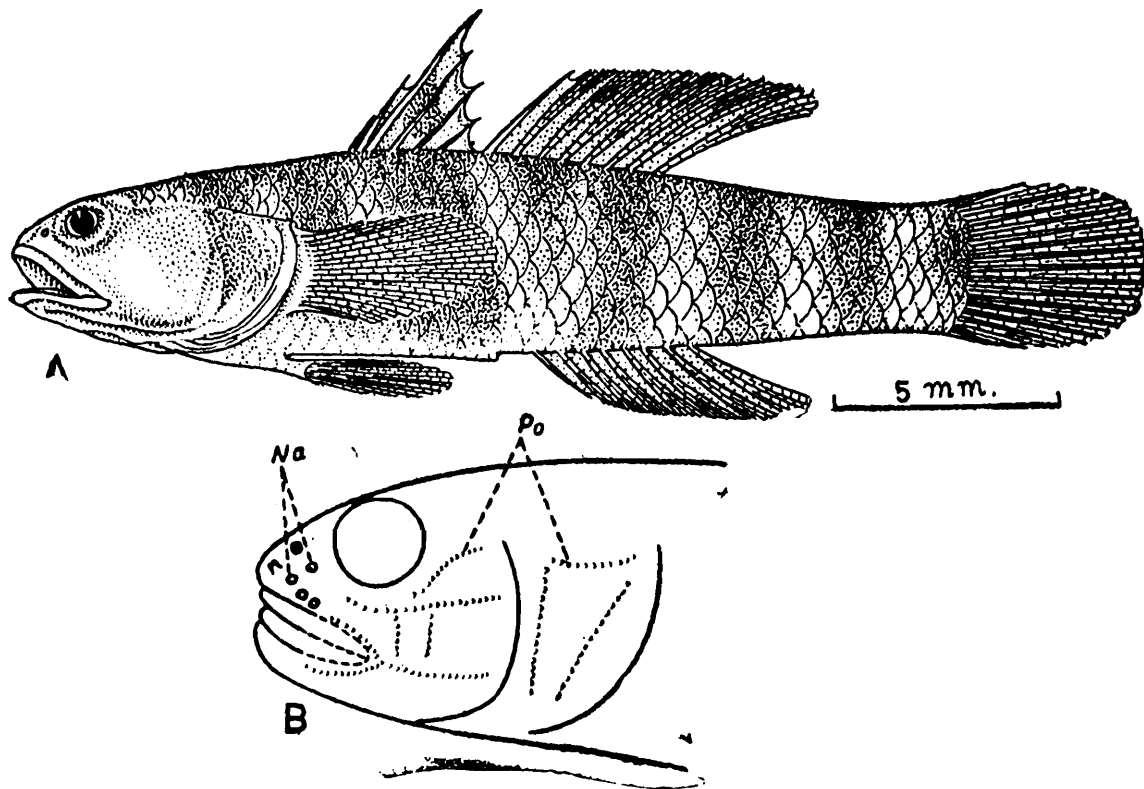


Fig. 1. *Stigmatogobius hoevenii* : A—lateral view ; B—schematic figure showing nasal sensory canal-pores (Na) and pit organs (Po).

bands, first on interorbital region, second and third on predorsum, fourth below first dorsal fin, fifth to seventh below second dorsal fin, eighth at caudal peduncle and the ninth at caudal fin base. First dorsal fin with a dark blotch, margin diaphanous.

**Distribution :** Long Island, Middle Andamans ; Thailand, Hongkong, Samoa, Indo-Australian archipelago, ? the Philippines (Koumans, 1953) ; in seas, estuaries and freshwaters. The present record of this species from West Bengal extends its distributional range to the mainland of India.

Key to Indian species of *Stigmatogobius*

- 1. Predorsal scales 6-9 ; sides of body without transverse bands.
- Predorsal scales 11-13 ; body with distinct transverse bands along sides.. *S. hoevenii*

- 2. Head depressed ; jaws subequal ..... *S. oligactis*
- Head subcylindrical or compressed ; jaws not subequal.
- 3. Lower jaw prominent.
- Upper jaw prominent.
- 4. Inner row of teeth in lower jaw enlarged ; anal fin-rays eight ..... *S. sadanundio*
- Inner row of teeth in lower jaw not enlarged ; anal fin-rays six ..... *S. romeri*
- 5. Pectoral fin-rays 14-15 .. *S. poicilosoma*
- Pectoral fin-rays 16-19.
- 6. Mouth oblique, maxillary reaches upto middle of eye ..... *S. minima*
- Mouth horizontal, maxillary does not reach middle of eye.
- 7. Nasal sensory canal-pore present ; anal fin-rays seven ..... *S. micrognathus*

GG. Nasal sensory canal-pore  
absent ; anal fin-rays eight *S. yanamensis*

#### ACKNOWLEDGEMENTS

I am grateful to the Director, Zoological Survey of India, for facilities and to Dr. K. C. Jayaram, Deputy Director, for kindly critically going through the manuscript. I am thankful to Mr. P. C. Biswas, Departmental artist for drawing the figure.

*Zoological Survey of India, Calcutta*

#### REFERENCES

- AKIHITO, P. AND MEGURO, K. 1975. On a goby *Pseudogobius javanicus* from Okinawa Prefecture, Japan. *Jap. J. Ichthyol.*, 22 (1) : 46-48 [Japanese with English summary]
- HERRE, A. W. C. T. 1939. On a collection of littoral and freshwater fishes from the Andaman Island *Rec. Indian Mus.*, 41 : 327-372.
- KOUMANS, F. P. 1953. Gobioida. IN : *The fishes of the Indo-Australian archipelago*, 10 : xiii+1-423, Leiden (E. J. Brill).

T. K. CHATTERJEE

---