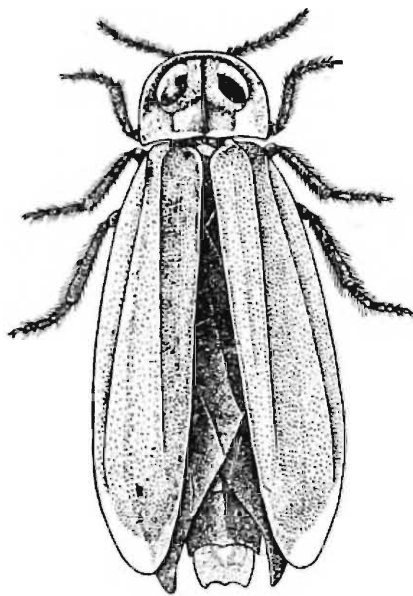


VIII COLEOPTERA, II: MALACODERMIDAE.

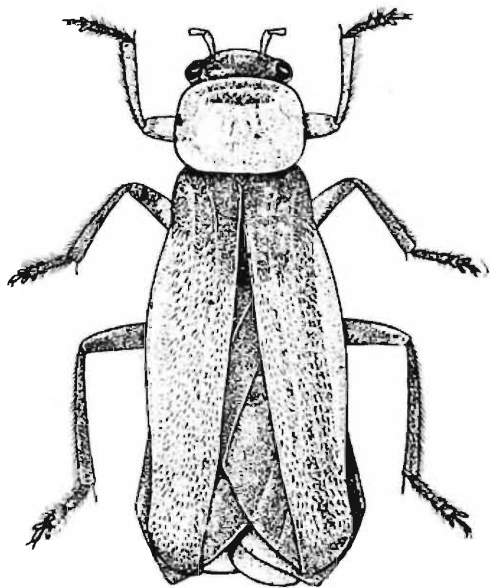
By ERNEST OLIVIER, *Correspondant of the Museum d'Histoire naturelle de Paris.*

Diaphanes simulator, nov. sp.

Oblongo-elongatus, ater; antennis gracilibus, setosis, prothorace haud longioribus; oculis magnis, globosis, subtus conjunctis; prothorace breve, convexo, antice rotundato, margine laterali plano et antice leviter erecto, longitudinaliter carinato, variolose punctato, griseo-albido, macula quadrata basali laevi flavescente et duabus plagis anticis diaphanis; scutello triangulari flavescente; elytris prothorace haud latioribus, dein ampliatis et apicem versus attenuatis, pubescentibus, rugosis, unicastis, sordide albidis, macula parva juxta scutel-



I.



2.

Fig. 1.—*Diaphanes simulator*, n. sp., $\times 4$. Fig. 2.—*Themus aborensis*, n. sp., $\times 6$.

lari palide flavescente et tenuissime flavo marginatis; prosterno flavo pectore et abdomine nigris; pygidio flavo, trilobato; 5° et 6° ventris, segmentis plaga magna rosea ornatis, ultimo flavo; coxis flavis, pedibus nigris. ♀ ignota.

Long. 12—13 millim.

This species has a good deal of resemblance to *Pyrocoelia lampyroides*, Ern. Oliv.: the colour of the prothorax and elytra is almost the same, but it is, however, perfectly distinct and will

easily be recognized by its shorter antennae, which are slender and not pectinate, by the longitudinal carina of the prothorax distinct throughout its whole length; by its rough and indistinctly punctured elytra, which have only one raised line, and with the base near the scutellum narrowly pale yellowish. The luminous parts are one large transverse eburated spot on the middle of the fifth and sixth ventral plates; the last and the pygidium are yellow.

The very fine yellowish margins of the elytra are sometimes scarcely marked.

A large series of specimens of this species, all males, was collected flying at dusk, at Kobo (400 feet).

***Themus aborensis*, nov. sp.**

Oblongus, fuscus; capitis dimidio antico, antennarum duobus primis articulis, prothorace, prosterno, coxis, femorum anticorum et mediorum basi, tarsorumque unguiculis, aurantiacis; prothorace laevi, nitido, transverso, subquadrato, angulis rotundatis, marginibus erectis; scutello parvo, nigro; elytris oblongo-elongatis, pubescentibus, rugosis, flavis, basi sat late et apice tenuissime fuscis; abdomine elytris operto, fusco, ultimo ventrali segmento longitudinaliter carinato; tibiis anticis piceis; tarsorum unguiculis simplicibus.

Long. 9 millim.

A single specimen of this pretty species which I think to be a male was taken at Kobo (400 feet).