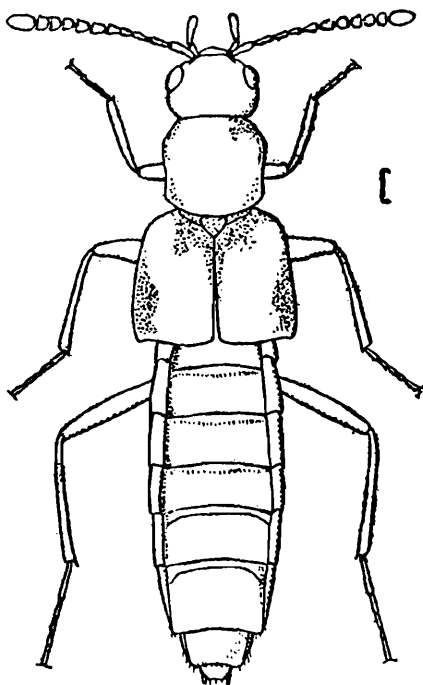


## DESCRIPTION OF A NEW STAPHYLINID BEETLE FROM THE PUNJAB.

By MALCOLM CAMERON, M.B., R.N., F.E.S.

### **Chilopora indica**, sp. nov.

Black, greasy lustrous, densely and finely punctured and pubescent; elytra yellow, scutellary region and the sides near the posterior angles of the elytra slightly infuscate, the posterior margin of the abdominal segments narrowly and obscurely reddish. Antennae reddish-yellow. Legs yellow. Length 3.75 mm. In size and build scarcely differing from *longitarsis* Kr., but differently coloured and the sculpture throughout equally dense but finer. Head narrower than the thorax, the post-ocular region rounded and gradually retracted behind, densely and finely punctured and with a fine coriaceous ground sculpture. Antennae rather long; 3rd joint a little longer than 2nd; 4th a little longer than broad; 5th to 10th of equal length, but gradually increasing in width, transverse; 11th as long as the two preceding together. Thorax slightly longer than broad, sides rounded in front, slightly retracted behind, posterior angles obtuse; in the middle of posterior half with



TEXT-FIG. 1.—*Chilopora indica*, sp. nov.

an obsolete impression; sculpture etc., as on head. Elytra (measured from the base) about a third longer and a good deal broader than thorax, extremely finely and very closely punctured. Abdomen extremely finely and very densely punctured and pubescent throughout.

Punjab ; Khewra, Salt Range, Sta. 5. Under stones in slightly moist soil. 9th April 1931. Four specimens (Coll. Hem Singh Pruthi). Types in the Indian Museum, Calcutta (No.  $\frac{2718}{44}$ ) and one specimen in my collection.