

## A NEW LIZARD OF THE GENUS *RIOPA* GRAY (SCINCIDAE) FROM TAMIL NADU, INDIA.

By

R. C. SHARMA

*Desert Regional Station,  
Zoological Survey of India, Jodhpur*

(with 1 Text-fig.)

While studying a collection of reptiles made by Dr. H. S. Pruthi during 1929 in Tamil Nadu, I came across this new species of skink (Reptilia : Sauria : Scincidae). All specimens, including the types are present in the National Zoological collections, Zoological Survey of India, Calcutta.

Genus *Riopa* Gray

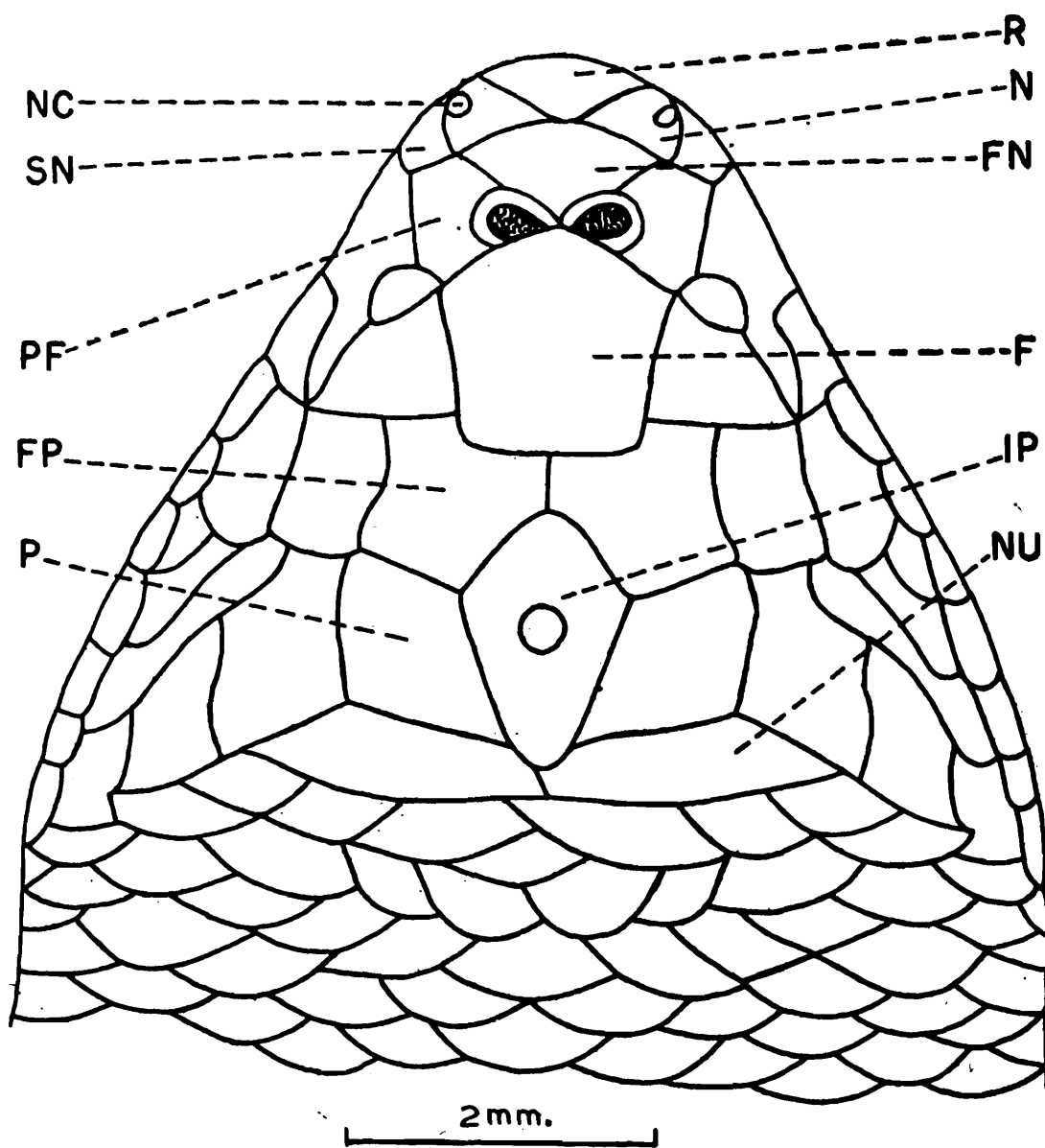
*Riopa pruthi* n. sp.

Dorsum deep brown, with black equidistant longitudinal lines; top of head with dark spots and longitudinal markings; whitish below; tail brownish.

Head small, snout obtuse; distance between the end of snout and forelimb contained  $1\frac{1}{2}$  to  $1\frac{3}{4}$  times in the distance between the axilla and groin; lower eye-lids scaly, with a large semitransparent scale in the centre; supranasals entire, in contact with one another behind the rostral; frontal shorter than the fronto-parietals and inter-parietal together; two pairs of nuchals; an enlarged temporal scale borders the outer margin of parietal; ear opening about half as large as the eye opening, with 6 minute lobules; 7 supralabials, 5th below the middle of the eye, longer than the adjacent labials; body covered with 32-34 smooth subequal scales; 50 scales down the middle of the back; marginal preanals slightly enlarged; digits long, fourth toe distinctly longer than third; 16 strongly keeled lamellae under the fourth toe; tail thick at the base, a little longer than the head and body.

*Measurements*.—1. Standard length 67 mm. 2. Tail length 72 mm. 3. Interorbital length 5 mm. 4. Maximum girth of body 22 mm.

*Type specimens*.—Holotype : One example, Z.S.I. Reg. No. 22393, Chitteri range, lat.  $11^{\circ}50'$  N, long.  $78^{\circ}25'$  E, Salem District, Tamil Nadu, India. Paratypes : Two examples from same lot as holotype.



Text-fig. 1. *Riopa pruthi* n. sp. Head in dorsal view; F., frontal; FN., frontonasal; FP., frontoparietal; IP., interparietal; N., nasal; NC., nasal canal; NU., nuchal; P., parietal; PF., prefrontal; R., rostral; SN., supranasal.

*Comparison.*—*Riopa pruthi* n. sp. closely resembles *Riopa punctata* (Gmelin), but is separable from the latter as follows : (i) Distance between axilla and groin  $1\frac{1}{2}$ - $1\frac{3}{4}$  times (vs.  $2$ - $2\frac{3}{4}$  times) the distance between tip of snout and fore limb. (ii) Lower eyelids scaly (vs. with an undivided semitransparent disc) (iii) Frontal scale shorter (vs. longer) than frontoparietals and interparietal together. (iv) Two pairs of nuchal, (vs. single pair). (v) Ear opening with 6 (vs. 1 or 2) minute lobules on anterior margin. (vi) with 32 or 34 (vs. 24-28) scales round the body; 50 (vs. 62-76) scales down the middle of back. (vii) with 16 (vs. 11-14) lamellae under 4th toe.

I feel pleasure in naming this species after Dr. H. S. Pruthi, its collector.