

ON SOME POLYCHAETES FROM ANDAMAN AND NICOBAR ISLANDS

By

T. D. SOOTA AND C. A. NAGESWARA RAO

Zoological Survey of India, Calcutta

(With 2 Text-figures)

INTRODUCTION

The polychaete fauna of the Andaman and Nicobar Islands is very rich in diversity as well as in abundance of species, because of numerous varied eco-niches available in the littoral and sublittoral zones of the coast. Our current knowledge of the polychaetes of these islands is based mainly on the works of Fauvel (1932, 1953) and Tampi and Rangarajan (1964), but it is far from complete. More intensive field collections are likely to yield rich dividends in knowledge and further additions to the faunal list, as will be evidenced from the present paper which reveals eight additional species from these islands, from amongst a total of 26 species dealt with.

The material for the present study was collected at various periods by different parties of the Zoological Survey of India. It comprises 26, species belonging to 20 genera and 13 families. Descriptions and variations have been furnished wherever necessary. Only relevant synonymies have been included since most of these have already been given by Fauvel (*op. cit.*), Tampi and Rangarajan (*op. cit.*) and Day (1951, 1953, 1957).

SYSTEMATIC ACCOUNT

Family POLYNOIDAE

***Iphione muricata* (Savigny)**

1818. *Polynoe muricata* Savigny, *Système Annél.* : 347.

1922. *Iphione muricata* Seidler, *Zool. Anz.*, 55 (3/4) : 75.

1953. *Iphione muricata* Fauvel, *Fauna of India*, Annelida, Polychaeta: 32.

Material.—Several ex.; Z.S.I. Reg. No. An 618/1; Locality—(under stones) Aberdeen Bay, Port Blair; 2. III. 1974. coll. G. C. Rao,

Description.—Prostomium with a small tubercle. Median tentacle absent, lateral tentacles one pair. Eyes two pairs. Elytra covering the whole body 13 pairs, each divided into polygonal areas. Dorsal setae many and spinulose, ventral setae stout and unidentate.

Harmothoe dictyophora (Grube)
(Text-fig. 1A)

1878. *Polynoe dictyophora* Grube, *Mém. Acad. imp. sci., St-Petersbourg*, 25 (7) : 44.
1905. *Harmothoe dictyophora* Willey, *Ceylon Pearl oyster Fisheries Supp. rep.* 30 (4) : 251.
1932. *Harmothoe dictyophora* Fauvel, *Mem. Indian Mus.*, 12(1) : 22.

Material.—One ex.; Z. S. I. Reg. No. An 619/1; Locality—Aerial Bay, Port Blair; 1. II. 1959, coll. K. K. Tiwari.

Description.—Elytra covering the whole body 15 pairs, each having polygonal areas fringed on one side and provided with simple and dichotomously branched chitinous spines. Dorsal cirri with papillae arranged spirally.

Remarks.—This is the first record of this species from the Andaman waters. Earlier reported from Orissa and Madras coasts.

Harmothoe ampullifera (Grube)
(Text-fig. 1B)

1878. *Polynoe ampullifera* Grube, *Mem. Acad. imp. sci. St-Petersbourg*, 25 (7) : 35.
1901. *Lepidonotus ampulliferus* Gravier, *Nouv. Archs. Mus. Hist. nat., Paris* 2 (4) : 214.
1911. *Harmothoe ampullifera* Fauvel, *Archs. Zool. exp. gen.*, 6 (5) : 368.
1932. *Harmothoe ampullifera* Fauvel, *Mem. Indian Mus.*, 12 (1) : 22.

Material.—One ex.; Z. S. I. Reg. No. An 620/1; Locality—Ross Island, Port Blair; 26. III. 1952. coll. H. C. Ray.

Description.—Elytra covering the whole body 15 pairs, each fringed and provided with large oval vesicles more at the outer border. Tentacles and cirri papillated. Ventral lamellae conspicuous.

Remarks.—Earlier recorded from Camorta Island and from Madras coast.

Gastrolepidia clavigera Schmarda

1861. *Gastrolepidia clavigera* Schmarda, *Neue Wirbellose Thiere*, 2 : 159.
1932. *Gastrolepidia clavigera* Fauvel, *Mem. Indian Mus.*, 12 (1) : 25.

Material.—One ex.; Z. S. I. Reg. No. An 621/1 Locality—South point, Port Blair; 7. III. 1959. coll. K. K. Tiwari.

Description.—Elytra covering the whole body more than 15 pairs, thin and transparent. Dorsal setae stout and spinulose, ventral setae also stout with unidentate tip. Each segment with a pair of lamellae ventrally.

Family CHRYSOPETALIDAE

Bhawania goodei Webster

1884. *Bhawania goodei* Webster, *Bull. U. S. natn. Mus.*, **25** : 308.
1902. *Bhawania cryptocephala* Gravier, *Nouv. Archs. Mus. Hist. nat., Paris*, **2** (4) : 263.
1932. *Bhawania cryptocephala* Fauvel, *Mem. Indian Mus.*, **12** (1) : 43.
1953. *Bhawania goodei* Day, *Ann. Natal Mus.*, **12** (3) : 407.

Material.—Several ex., Z. S. I. Reg. No. An 622/1; Locality—Aberdeen Bay, Port Blair; 1 IV 1969. coll. T. D. Soota.

Several ex.; Z. S. I. Reg. No. An 623/1; Locality—(Muddy coast) Aberdeen Bay, Port Blair; 2. III. 1974. coll. G. C. Rao.

Description.—Body elongated, thin and covered dorsally by paleae arranged transversely on each segment, pale yellow to dark brown in colour. Ventral ramus with spinigers, many falcigers and a few compound capillary setae.

Family AMPHINOMIDAE

Amphinome rostrata (Pallas)

(Text-fig. 1C)

1766. *Aphrodita rostrata* Pallas, *Misc. Zool.* : 106.
1885. *Amphinome rostrata* McIntosh, *Rep. Challenger Soc.*, **12** : 21.
1930. *Amphinome rostrata* Fauvel, *Bull. Madras Govt Mus.*, **1** (2) : 10.

Material.—One ex.; Z. S. I. Reg. No. An 624/1; Locality—(Rocky coast) Aberdeen Bay, Port Blair; 25. III. 1974. coll. G. C. Rao.

Description.—Prostomium small with a pair of tentacles and a pair of eyes. Caruncle heart-shaped with a small median tentacle. Bushy gills orange-coloured, and beginning from 2nd setigerous segment. Dorsal setae capillary and some harpoon shaped. Ventral setae short and uncinatae.

Remarks.—Earlier recorded from benthic habitat in Andaman Sea and from a drifting log off Puri, Orissa. The present specimen was collected from under a stone. Day (1953) reported this species also from intertidal habitat of South African coast.

Eurythoe complanata (Pallas)

1766. *Aphrodita complanata* Pallas, *Misc. Zool.*: 109
 1931. *Eurythoe complanata* Augener, *Fauna Südwest—Aust.*, 4 : 87.
 1932. *Eurythoe complanata* Fauvel, *Mem. Indian Mus.*, 12 (1) : 45.

Material.—One ex.; Z.S.I. Reg. No. An 625/1; locality—(Rocky coast) Aberdeen Bay, Port Blair; 1. IV 1969. coll. *T. D. Soota*. Several ex.; Z.S.I. Reg. No. An 626/1; Locality—Aberdeen Bay, Port Blair; 2. III. 1974. Coll. *G. C. Rao*.

Description.—Body elongated. Eyes 4, conspicuous. Caruncle oval, with small lateral lobes. Ventral setae furcate.

Eurythoe parvecarunculata Horst

(Text-fig. 1 D)

1912. *Eurythoe parvecarunculata* Horst, *Siboga Exped.*, 24 : 37.
 1932. *Eurythoe parvecarunculata* : Fauvel, *Mem. Indian Mus.*, 12 (1) : 26

Material.—3 ex.; Z. S. I. Reg. No. An 627/1; Locality—Haddo Bay, Port Blair; 3. III. 1959. coll. *K. K. Tiwari*.

Description.—Body elongated. Caruncle small and oval. Bushy gills beginning from 3rd setigerous segment. Ventral setae furcate with unequal limbs. Aciculum of ventral ramus elongated with oval tip.

Family HESIONIDAE

Hesione pantherina Risso

1826. *Hesione pantherina* Risso, *Hist. Nat. principales productions : Europe meridionale*, 4 : 418.
 1923. *Hesione pantherina* : Fauvel, *Faune Fr.*, 5 : 233.
 1932. *Hesione pantherina* : Fauvel, *Mem. Indian Mus.*, 12 (1) : 60.

Material.—One ex.; Z. S. I. Reg. no. An 628/1; Locality—(Rocky coast) Aberdeen Bay, Port Blair; 1. IV. 1969; coll. *T. D. Soota*. 4 ex. Z. S. I. Reg. No. An 629/1; Locality—Aberdeen Bay, Port Blair; 2. III. 1974. coll. *G. C. Rao*.

Description.—Body with 17 segments. Prostomium bilobed with two small tentacles and two pairs of eyes. Peristomial tentacles 4 pairs on each side. Parapodia with a single ramus and with large dorsal cirri. Setae compound and sickleshaped.

Remarks.—Only one specimen showed the colour pattern on the dorsal side with dark brown elongate dots arranged longitudinally. Remaining 3 specimens which are light brown to flesh brown in colour lack this pattern.

Family PHYLLODOCIDAE

Phyllodoce quadraticeps Grube

1878. *Phyllodoce quadraticeps* Grube, *Mem. Acad. imp. sci., St. Petersbourg.* 25 (7) : 98.

1932. *Phyllodoce quadraticeps* Fauvel, *Mem. Indian Mus.*, 12 (1) : 68.

Material.—One ex.; Z. S. I. Reg. No. An 630/1; Locality—Car Nicobar; 15. III. 1969; coll. *T. D. Soota*. One ex., Z. S. I. Reg. No. An 631/1; Locality—(Algal mass) Chiriatapu; 15. IV 1974. coll. *G. C. Rao*.

Description.—Body long and slender, green dorsally and yellow ventrally. Prostomium square shaped with 4 very small tentacles. Peristomial tentacles 4 pairs, out of which one pair subulate and the remaining three short and ovoid. Parapodia uniramous and with a big leaf-like dorsal cirri. Setae compound spinigers.

Remarks.—Earlier recorded from Camorta Island.

Family NEREIDAE

Lycastis indica Southern
(Text-fig. 1 E)

1921. *Lycastis indica* Southern, *Mem. Indian Mus.*, 5 : 578.

1932. *Lycastis indica* : Fauvel, *Mem. Indian Mus.*, 12 (1) : 82.

1951. *Lycastis indica* Day, *Ann. Natal Mus.*, 12 (1) : 27.

Material.—3 ex.; Z. S. I. Reg. No. An 632/1; Locality—Aberdeen Bay, Port Blair; 11. I. 1959, coll. *K. K. Tiwari*.

Description.—Dorsal cirri (in all the three examples) broad, flattened and with pointed ends. Dorsal setae 2-3 discernible below the dorsal cirri. Ventral ramus with many compound spinigerous setae.

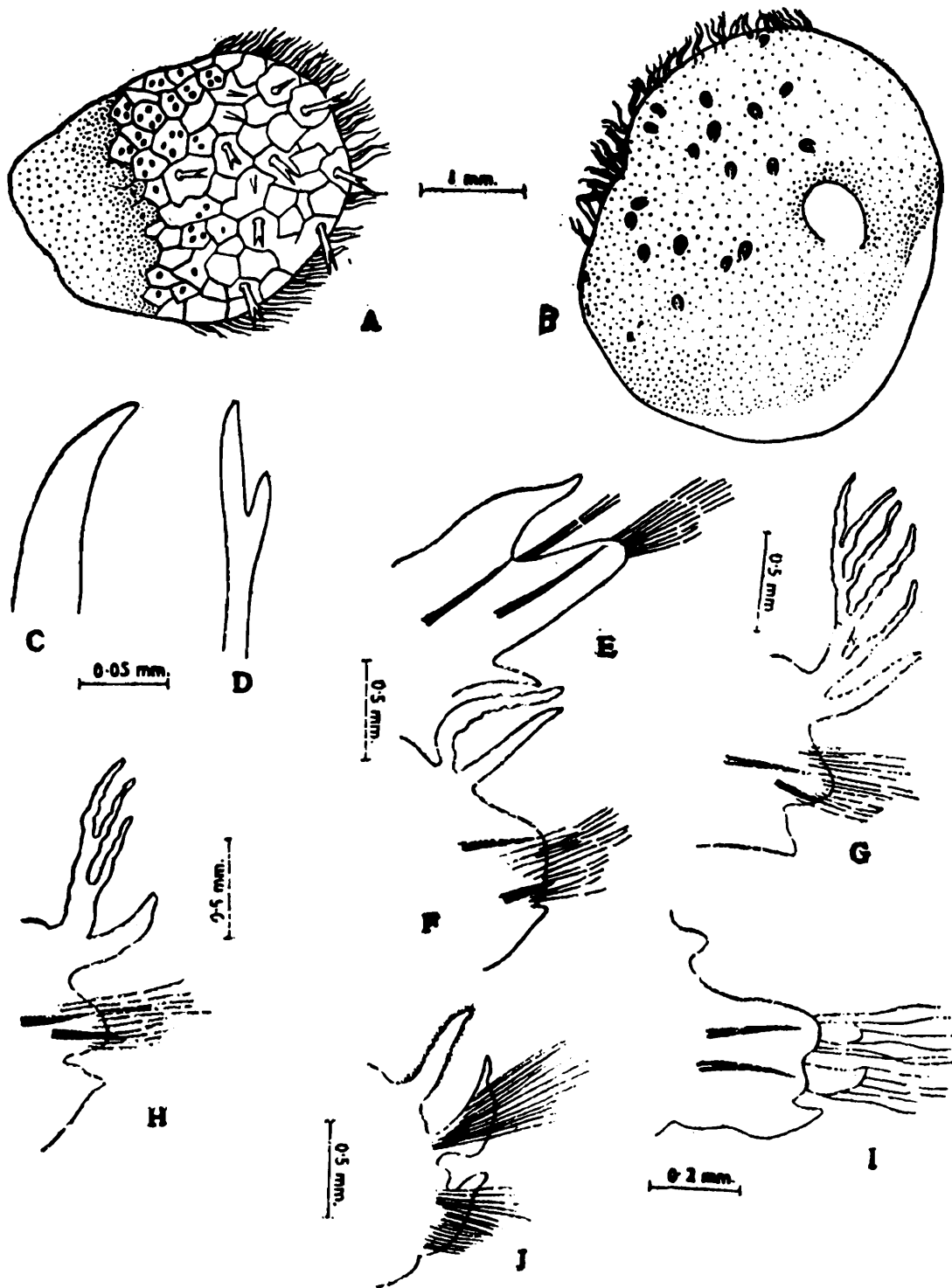
Remarks.—The present specimens show characters of both *Lycastis indica* Southern in having very few (2-3) dorsal setae as well as of *Lycastis meraukensis* Horst in having broad and flattened dorsal cirri. Such examples have also been reported by Day (1951) from the coast of South Africa.

Perinereis singaporiensis Grube

1878. *Perinereis singaporiensis* Grube, *Mem. Acad. imp. sci. St. Petersbourg.* 25 (7) : 84.

1932. *Perinereis singaporiensis* Fauvel, *Mem. Indian Mus.*, 12 (1) : 103.

Material.—3 exs.; Z. S. I. Reg. No. An 633/1; Locality—(Under stones) Aberdeen Bay, Port Blair; 25. III. 1974. coll. *G. C. Rao*.



Text-fig. 1—A. *Harmothoe dictyophora* (Grube) elytron; B. *Harmothoe ampullifera* (Grube) elytron; C. *Amphinome rostrata* (Pallas), ventral seta; D. *Eurythoe parvecarunculata* Horst ventral furcate seta; E. *Lycastis indica* Southern, parapodium; F. *Eunice marenzelleri* Gravier, branchiate foot; G. *Eunice afra* var. *punctata* Peters anterior branchiate foot; H. *Eunice afra* var. *paupera* Grube anterior branchiate foot. I. *Glycera tessellata* Grube, parapodium from mid-body; J. *Nainereis laevigata* (Grube) thoracic foot.

Description.—Proboscis with 1st lobe having 2 paragnaths in a line, 2nd with 9-10 in a cluster, 3rd with many in a group, 4th with many small and large ones, 5th with only one small one, 6th with 2 transversely flattened ones, 7th & 8th with several arranged in 2 rows. Dorsal setae

homogomph spinigers. Ventral setae heterogomph falcigers and heterogomph spinigers. Dark brown median line present on the dorsal side of the anterior segments.

Remarks.—This is the first record of this species both from the Andaman and the Indian waters. Earlier reported from Diamond Island, Burma.

***Perinereis cultrifera* var. *helleri* Grube**

1878. *Perinereis camiquina* Grube, *Mem. Acad. imp. sci., St-Petersbourg*, 25 (7) : 87.
1923. *Perinereis cultrifera* Fauvel, *Faune Fr.*, 5 : 352.
1953. *Perinereis cultrifera* var. *helleri* Fauvel, *Fauna of India, Annelida, Polychaeta* : 208.

Material.—5 ex.; Z. S. I. Reg. No. An 634/1; Locality—Aberdeen Bay, Port Blair; May 1930; coll. *K. N. Das*.

Description.—Largest tentacular cirri reaching 10th segment. 1st lobe of proboscis with 2 paragnaths in a line, 2nd, 3rd and 4th with many in clusters, 5th with 3 in a triangle, 6th with one transversely flattened one, 7th & 8th with several arranged in 3 rows.

Remarks.—This is the first record of this species from the Andaman waters. Earlier reported from Gulf of Mannar and Bombay harbour.

Family EUNICIDAE

***Eunice siciliensis* (Grube)**

1840. *Palalo siciliensis* Grube, *Actinien, Echinodermen und wurmen, J. H. Bon* : 83.
1904. *Eunice siciliensis* Crossland, *Proc., zool. Soc., Lond.*, 3 : 323.
1932. *Eunice siciliensis* Fauvel, *Mem. Indian Mus.*, 12 (1) : 138.

Material.—Several ex.; Z. S. I. Reg. No. An 635/1; Locality—(Coral rocks) Havelock Island; 2. IV 1974. Coll. *G. C. Rao*.

Description.—Body elongated with simple gills beginning from 50th-60th segments. Acicular setae and comb setae absent. Parapodia with only capillary and falcigerous setae.

***Eunice marenzelleri* Gravier
(Text-fig. 1F)**

1900. *Eunice marenzelleri* Gravier, *Nouv. Archs. Mus. Hist. nat. Paris*, 2(4) : 229.
1953. *Eunice marenzelleri* Fauvel, *Fauna of India, Annelida, Polychaeta*; 242,

Material.—An incomplete ex. with only anterior 40 segments Z. S. I. Reg. No. An 636/1; Locality—(Rocky coast) Aberdeen Bay, Port Blair; 2. III. 1974; Coll. G. C. Rao.

Description.—Tentacles and tentacular cirri smooth. Gill filaments simple, commencing from 24th segment and extending upto 40th. Dorsal cirri approaching in length to that of gill filaments. Parapodia with acicular bidentate setae, yellow coloured, comb setae, winged capillary setae and falcigerous setae.

Remarks.—The specimen is reddish brown in colour without any coloured dots and collar on 4th or 5th segments. This is the first record of this species from the Indian waters. Earlier it has been reported from Persian Gulf.

***Eunice antennata* Savigny**

1820. *Leodice antennata* Savigny, *Systeme Annelids. Description Egypte. Hist. Nat. Paris* : 21.

1904. *Eunice antennata* Crossland, *Proc. zool. Soc. Lond.*, 3 : 312.

1932. *Eunice antennata* Fauvel, *Mem. Indian Mus.*, 12 (1) : 138.

Material.—One ex.; Z. S. I. Reg. No. An 637/1; Locality—Chatam jetty, Port Blair; 16. II. 1974. Coll. K. V. Surya Rao.

Description.—Specimen short with regenerated posterior part. Prostomial tentacles annulated. Gills beginning from 6th segment, simple in first 2 segments and then becoming pinnately branched with 6-12 branches. Acicular setae tridentate and deep yellow in colour. Parapodia with comb setae, capillary setae and compound setae.

***Eunice afra* var. *punctata* Peters (Text-fig. 1G)**

1854. *Eunice punctata* Peters, *Akad. Wiss. Berlin* : 611.

1957. *Eunice afra* var. *punctata* Day, *Ann. Natal Mus.*, 14 (1) : 89.

Material.—3 ex.; Z. S. I. Reg. No. An 638/1; Locality—Havelock Island; 22. II. 1974. Coll. K. V. Surya Rao.

Description.—Body elongated, cylindrical and brown in colour with small white punctations only over the anterior portion. A white collar on 5th segment present. Gills commencing from 14th segment. Gill filaments single on first few segments, 4-6 on others, gradually decreasing posteriorly, and finally absent on the last segments. Parapodia with acicular bidentate setae black-coloured, comb setae, capillary setae and falcigerous setae.

Remarks.—The specimens were collected from corals. This is the

first record of the variety from the Indian waters. Earlier reported from South African coasts *vide* Day (1957).

***Eunice afra* var. *paupera* Grube**
(Text-fig. 1H)

1878. *Eunice paupera* Grube, *Mem. Acad. imp. sci., St. Petersbourg*, 25(7) : 160.

1930. *Eunice paupera* Pruvot, *Archs. Zool. exp. gén.*, 70 : 69.

1932. *Eunice afra* var. *paupera* Fauvel, *Mem. Indian Mus.*, 12 (1) 135.

Material.—One ex.; Z. S. I. Reg. No. An 639/1; Locality—Rampur beach, Mayabander; 11. III. 1974. Coll. G. C. Rao.

Description.—Body elongated, flattened posteriorly and of green colour with a dorsal median line. Gills beginning from 19th segment, Gill filaments 3-4, gradually decreasing posteriorly, and completely absent on the last segments. Acicular setae bidentate and black in colour. Comb setae, capillary setae and falcigerous setae present.

Remarks.—The specimen was collected from algal plants along with corals. This variety is new for the Andaman waters. Earlier reported from Philippine Islands and Malay seas. The difference between the two varieties of the species *Eunice afra* lies in the beginning of gills, number of gill filaments, and colouration of body. But some intermediate forms have been found in the collections under study which are light brown in colour without punctations, with gills commencing from 15th-18th segments and having 3-4 gill filaments. The two varieties might be due to their different habitats.

***Lysidice collaris* Grube**

1870. *Lysidice collaris* Grube, *Akad. Wiss. Berlin* : 495.

1932. *Lysidice collaris* Fauvel, *Mem. Indian Mus.*, 12 (1) : 143.

Material.—Several ex.; Z. S. I. Reg. No. An 640/1; Locality—(on coral rocks) Havelock Island; 6. IV 1974, Coll. G. C. Rao.

Description.—Prostomial tentacles 3. Peristomial tentacles and gills absent. Parapodia with acicular setae, capillary setae, comb setae and falcigers.

***Marphysa mossambica* (Peters)**

1854. *Eunice mossambica* Peters, *Akad. Wiss. Berlin*: 612.

1919. *Marphysa mossambica* Fauvel, *Archs. Zool. exp. gén.* 58 : 380

1932. *Marphysa mossambica* Fauvel, *Mem. Indian Mus.*, 12 (1) : 142.

Material.—2 ex.; Z. S. I. Reg. No. An 641/1; Locality—Camorta Island; 12. II. 1974, Coll. K. V. Surya Rao.

Description.—Prostomium with five tentacles. Peristomial tentacles absent. Gills beginning from 25th-30th segments. Gill filaments 6-8, number gradually increasing posteriorly. Parapodia with only simple setae.

Family GLYCERIDAE

Glycera tessellata Grube

(Text-fig. 1 I)

1863. *Glycera tessellata* Grube *vide* Hartman, 1959 *Catalog. Polychaetes and Annelids of the world*)

1932. *Glycera tessellata* : Fauvel, *Mem. Indian Mus.*, 12 (1) : 124.

Material.—4 ex.; Z. S. I. Reg. No. An 642/1; Locality—(on sandy coast) Havelock Island; 6. IV, 1974. Coll. G. C. Rao.

Description.—Each segment with 4-5 annulations. Gills absent. Papillae of proboscis long and slender with dentate margin. Parapodia with 2 unequal elongated anterior lobes and a pair of rounded posterior lobes slightly separated.

Family ORBINIIDAE

Nainereis laevigata (Grube)

(Text-fig. 1J)

1855. *Aricia laevigata* Grube, *Arch. Naturgesch.*, 21 : 112.

1927. *Nainereis laevigata* Fauvel, *Faune Fr.*, 16 : 22.

Material.—An incomplete ex.; Z. S.I. Reg. No. An 643/1; Locality—(under coral rocks) Havelock Island; 5. IV 1974. Coll. G.C. Rao.

Description.—Prostomium rounded and without tentacles and palps. Extruded proboscis with many large palmate lobes. Thorax flattened and having 24 segments. Abdomen rounded and cylindrical. Gills simple, long and beginning from 7th segment. Dorsal ramus with knife-like dorsal cirrus, spiny capillary and forked setae with unequal limbs. Ventral ramus padlike with many capillary denticulate setae and hooks. Ventral cirri absent.

Remarks.—This is the first record of this species from the Indian waters. Earlier recorded only from coasts of Sri Lanka.

Family CIRRATULIDAE

Audouinia tentaculata (Montagu)

(Text-fig. 2A)

1808. *Terebella tentaculata* Montagu, *Trans. Linn. Soc. Lond.*, 9 : 110.

1932. *Audouinia anchylochaeta* Fauvel, *Mem. Indian Mus.*, 12 (1) : 178.

1951. *Audouinia tentaculata* Day, *Ann. Natal, Mus.*, 12 (1) : 47.

Material.—3 ex.; Z. S. I. Reg. No. An 644/1; Locality—Aberdeen Bay, Port Blair; 16. I. 1959. Coll. K. K. Tiwari.

Description.—Prostomium pointed. Gills beginning from 1st setigerous segment. Tentacular cirri present on 4th-5th segments. Rami of parapodia wide apart. Dorsal ramus with few capillary setae and 4-5 hooks, ventral ramus also with few capillary setae but 4 hooks. Hooks in both rami of light red colour.

Remarks.—*Audouinia anchylochaeta* the Indo-pacific form was described as having 2-3 hooks only, while *Audouinia tentaculata* of the Atlantic ocean with 4-5 per ramus. As the present material shows 4-5 hooks per ramus, they are referred to *Audouinia tentaculata*. Fauvel (1932) indicated that the two species are synonymous and Day (1951) had actually synonymised them after finding 3-5 hooks per ramus. The occurrence of *Audouinia tentaculata* is a new record to the Indian waters.

Family SABELLARIIDAE

Idanthysus pennatus (Peters) (Text-figs. 2B₁-B₄)

1854 *Sabellaria (Pallasia) pennata* Peters, *Akad. Wiss. Berlin* : 613

1932 *Pallasia pennata* Fauvel, *Mem Indian Mus.*, 12 (1) : 212.

1964. *Idanthysus pennatus* Tampi & Rangarajan, *J. mar. biol. Ass. India*, 6 (1) : 117.

Material.—Several ex.; Z. S. I. Reg. No. An 645/1; Locality—(on coral rocks) Havelock Island; 5. IV 1974; Coll. G. C. Rao.

Description.—Opercular stalks with paleae in two rows, outer curved and serrated, inner straight with pointed tip. Two thoracic segments with rudimentary feet. Three parathoracic segments having biramous parapodia with oar-shaped setae. Abdomen having many segments with dorsal uncinigerous tori and ventral capillary setae.

Family TERESELLIDAE

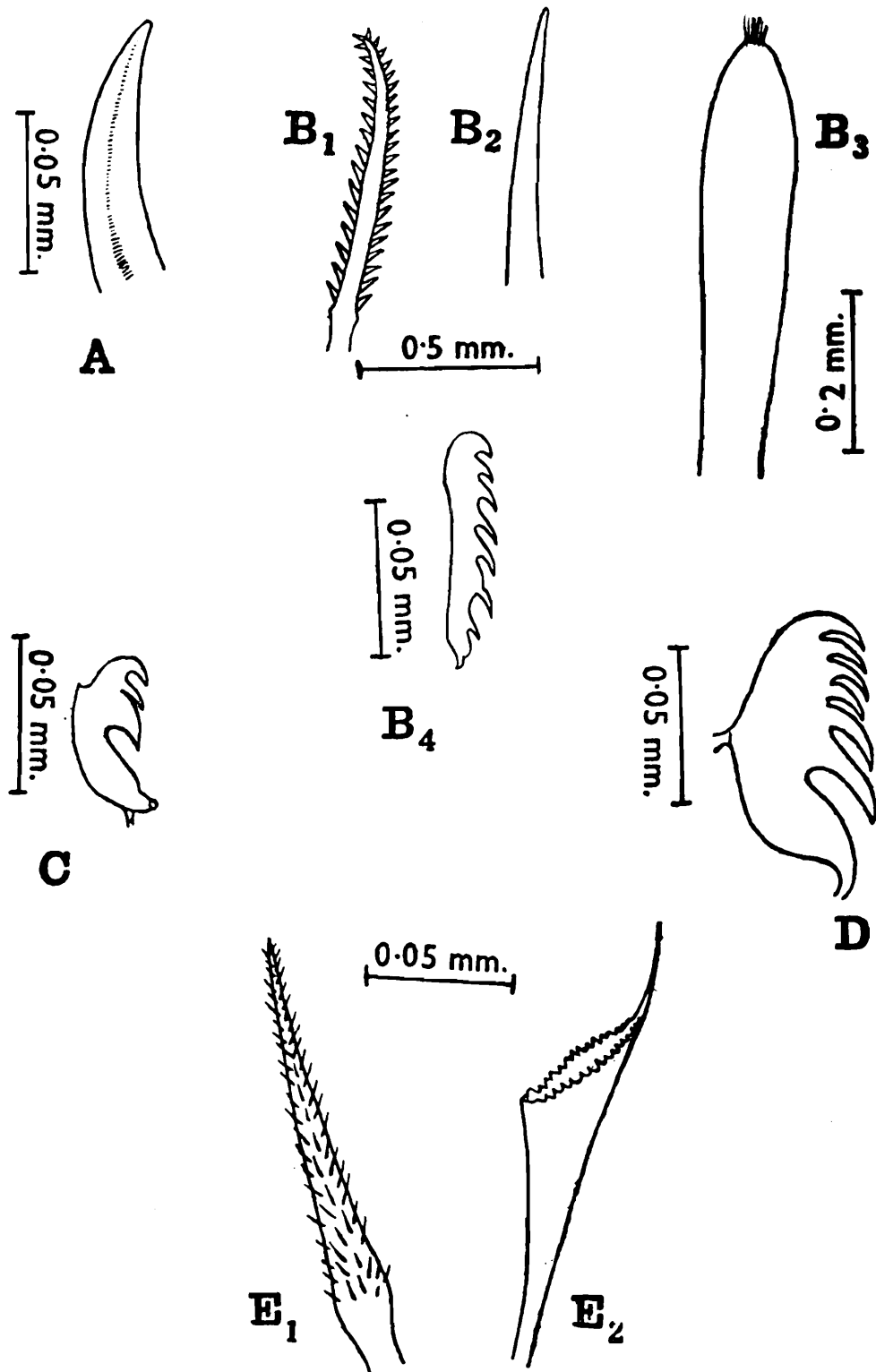
Streblosoma persica (Fauvel) (Text-fig. 2C)

1911. *Grymaea persica* Fauvel, *Archs. Zool. exp. gén.*, 6 : 419.

1930. *Streblosoma persica* Fauvel, *Bull. Madras Govt. Mus.*, 1 (2) : 58.

Material.—One ex.; Z. S. I. Reg. No. An 646/1; Locality—Rocky-coast) Aberdeen Bay, Port Blair; 25. III. 1974; Coll. G. C. Rao.

Description.—Body fleshy brown in colour. Tentacles long, stout and grooved. Gills 3 pairs each with numerous filaments of different sizes. Thorax with 30 segments. Dorsal setae beginning from 2nd seg-



Text-fig. 2—A. *Audouinia tentaculata* (Montagu), ventral hook; B₁-B₄ *Idanthyrus pennatus* (Peters) B₁. Outer palea; B₂ inner palea, B₃ oar-shaped seta, B₄. uncinus, C. *Streblosoma persica* (Fauvel), uncinus from thoracic foot; D. *Loimia medusa* (Savigny) uncinus from thoracic foot; E₁-E₂ *Spirobranchus giganteus* (Pallas), E₁ bayonet-shaped seta, E₂ trumpet-shaped seta.

ment. Uncinigerous tori appearing from 3rd setigerous segment. Tori with avicular uncini in single rows. Abdomen with 25-30 segments with pinnules well protruded.

Remarks.—This is the first record of this species from the Andaman waters. Earlier recorded from Gulf of Mannar.

Loimia medusa (Savigny)
(Text-fig. 2D)

1818. *Terebella medusa* Savigny (*vide* Hartman, 1959 *Catalog. Poly chaetous Annelids of the world*).

1932. *Loimia medusa* Fauvel, *Mem. Indian Mus.*, 12 (1) : 224.

Material.—3 ex.; Z. S. I. Reg. No. An 647/1; Locality—(On coral rocks) Havelock Island; 5. IV 1974; Coll. G. C. Rao.

Description.—Prostomium with lateral lobes. Prostomial tentacles many, long, slender and with purple coloured bands in live condition. Arborescent gills 3 pairs. Thorax with 17 segments. Uncini pectinate in single rows upto 10th segment, and then in double rows. Abdomen elongated and slender with uncinigerous pinnules. Thoracic region with conspicuous ventral shields.

Family SERPULIDAE

Spirobranchus giganteus (Pallas)
(Text-figs. 2E₁, E₂)

1766. *Serpula gigantea* Pallas (*vide* Hartman, 1959, *Catalog. Polychaetous Annelids of the world*).

1913. *Spirobranchus giganteus* Pixell, *Trans. Linn. Soc. Lond.*, 16 : 80.

1932. *Spirobranchus giganteus* Fauvel, *Mem. Indian Mus.*, 12 (1) : 224.

Material.—Several ex.; Z. S. I. Reg. No. An 648/1; Locality—Chatam jetty, Port Blair; 7. I. 1935; Coll. H. S. Rao.

Description.—Opercular stalk with lateral wings. Operculum with a round calcareous plate having 2 branched processes. Thorax having 7 segments of which the first with bayonet shaped setae, and the remaining with winged capillary setae. Abdomen long, cylindrical and many segmented. Abdominal parapodia with trumpet-shaped setae.

SUMMARY

The paper deals with the material of polychaetes collected from the Andaman and Nicobar Islands by the Zoological Survey of India parties. A total of 26 species have been identified in the collections. Eight among these are new to the Andaman and Nicobar waters and five are new records from the Indian waters. The morphological variations observed have been documented with illustrations where necessary.

ACKNOWLEDGEMENT

We are thankful to Dr. S. Khera, Deputy Director (Incharge), Zoological Survey of India, Calcutta, for the kind encouragement in the present work.

REFERENCES

- DAY, J. H. 1951. The polychaeta fauna of South Africa Pt. I, *Ann. Natal Mus.*, **12** : 1—67.
- DAY J. H. 1953. The polychaeta fauna of South Africa Pt. II, *Ann Natal Mus.*, **12** : 397—441.
- DAY, J. H. 1957. The polychaeta fauna of South Africa Pt. IV *Ann. Natal Mus.*, **14** : 59—129.
- FAUVEL, P. 1932. Annelida polychaeta of the Indian Museum, *Mem. Indian Mus.*, **12** : (1) 1-262.
- FAUVEL, P. 1953. *The Fauna of India*, Annelida, Polychaeta.
- TAMPI, P. R. S. and RANGARAJAN, K. 1964. Some polychaetous annelids from the Andaman waters, *J. mar. biol. Ass. India*, **6** (1) : 98—121.