

ON A COLLECTION OF SCARABAEIDAE
(INSECTA : COLEOPTERA) FROM ARUNACHAL
PRADESH WITH THE DESCRIPTION OF A
NEW SPECIES

By

S. K. CHATTERJEE AND G. N. SAHA

Zoological Survey of India
Calcutta

INTRODUCTION

There is very little published information on the Scarabaeidae of Arunachal Pradesh (N. E. F. A.). The present paper would be the first account of the family from the area. It is based on 206 specimens of Scarabaeidae belonging to the subfamilies Cetoniinae, Dynastinae and Rutelinae, collected by various survey parties from the Zoological Survey of India in the Arunachal Pradesh. These surveys were conducted by Dr. K. C. Jayaramakrishna, Shri S. Biswas, Dr. A. N. T. Joseph, Dr. S. K. Tandon and Dr. J. M. Julka. This collection comprises 20 species of which one species is new to science and described below. All the species which have been dealt with in the present paper, are recorded for the first time from Arunachal Pradesh. It has been observed that these species are abundantly distributed in the north eastern part of India. Further these species so far have not been found from south India.

LIST OF SPECIES

Subfamily CETONIINAE

1. *Macronota quadrilineata* Hope
2. *Macronota virgata* (Janson)
3. *Torynorrhina distincta* (Hope)
4. *Torynorrhina opalina* (Hope)
5. *Rhomborrhina mearesi* (Hope)
6. *Trigonophorus nepalensis* Hope
7. *Protaetia neglecta* (Hope)
8. *Protaetia cariana* (Gestro)
9. *Oxycetonia albopunctata*
(Fabricius)
10. *Clinteria arunachala* sp. n.

Subfamily DYNASTINAE

11. *Eophileurus planatus*
(Wiedemann)

Subfamily RUTELINAE

12. *Popillia cyanea* Hope
13. *Popillia cupricollis* Hope
14. *Popillia pilicollis* Kraatz
15. *Mimela passerinii* Hope
16. *Mimela horsfieldi* Hope
17. *Mimela heterochropus*
Blanchard
18. *Mimela bicolor* Hope
19. *Anomala signaticollis*
Nonfried
20. *Anomala perplexa* (Hope)

SYSTEMATIC ACCOUNT

Order COLEOPTERA

Family SCARABAEIDAE

Subfamily CETONIINAE

1. *Macronota quadrilineata* Hope

1831. *Macronota quadrilineata* Hope, Gray's Zool. Misc., p. 24.

1910. *Macronota quadrilineata* : Arrow, Fauna British India, Coleoptera : Lamellicornia, 1 : 61.

Material examined : 1 ex., N. E. F. A., Kameng Div., Ka'aktang, Bairabkunda, alt. 275 m., 20. x. 1967, (S. Biswas).

Distinctive characters : Elongate and narrowed posteriorly, antennal club three-jointed and long; elytra reddish with three black spots on base, apex and near middle; blackish head and pronotum with two and four longitudinal lines respectively; scutellum and pygidium each with one longitudinal median line; length 15.5 mm, breadth 8 mm

Remarks : This species was previously recorded from different parts of northeast India.

2. *Macronota virgata* (Janson)

1892. *Taeniodera virgata* Janson, Notes Leyd. Mus., 14 : 59.

1892. *Taeniodera quadristrigata* Kraatz, Deutsche Ent. Zeitsch p. 316.

1910. *Macronota virgata* : Arrow, Fauna British India, Coleoptera Lamellicornia, 1 : 62.

Material examined : 1 ex., N. E. F. A., Subansiri Div., Chakra, 22.v.1966, alt. 1128 m., (A. N. T Joseph).

Distinctive characters : Elongate and gradually narrowed posteriorly pronotum and head black with longitudinal lines, two on the head and four on the pronotum; elytra brick red and decorated with black patches and two yellow spots at the apical side, finely serrated at apex and gently sinuated behind the shoulders; abdomen finely punctured; length 16 mm.; breadth 7.5 mm.

Remarks : So far, this species was recorded from Assam, Manipur, Bangladesh : Silhet, Burma : Taung-ngu.

3. *Torynorrhina distincta* (Hope)

1841. *Rhomborrhina distincta* Hope, *Trans. Ent. Soc. Lond.*, 3 : 63.

1842. *Rhomborrhina mellyi* Burmeister, *Handb. Ent.*, 3 : 198.

1910. *Torynorrhina distincta* : Arrow, *Fauna British India, Coleoptera : Lamellicornia*, 1 : 82.

Material examined : 1 ex., N. E. F. A., Subansiri Expedition, Scium, alt. 500 M. 25. xi. 1974, (J. M. Julka).

Distinctive characters : Bright metallic green, antennae, lower surface, tarsi and legs black; posterior margin of the elytra and pygidium dark black and hairy; antennae small; clypeus densely rugose and punctured; pronotum strongly punctured at the sides; elytra irregularly punctate and coarsely rugose at the apex; metasternum closely punctured at the sides and abdomen fairly smooth; 33.5 mm; breadth 16 mm.

Remarks : Previously this species was recorded from Assam Manipur, Burma, Karen-ni, Kochin Hills.

4. *Torynorrhina opalina* (Hope)

1831. *Cetonia opalina* Hope, *Gray's Zool. Misc.*, p. 24.

1910. *Torynorrhina opalina* : Arrow, *Fauna British India, Coleoptera : Lamellicornia*, 1 : 84.

Material examined : 1 ex., N. E. F. A., Sonai, Rupai Forest, 28 v 1966., (A. N. T. Joseph); 1 ex., Daporijo, Subansiri bridge, alt. 150 m., 28. xi 966, (S. K. Tandon); 1 ex., alt. 500 m., 25. xi 1974, (J. M. Julka).

Distinctive characters : Elongate, pale pinkish olivaceous and faintly greenish above and leafy green beneath; clypeus green and deeply punctate at the sides; antennae brownish; pronotum shiny, deeply punctate at sides and nearly impunctate at the middle; scutellum dark green; elytra coarsely punctured at the apex; tarsi black; pygidium with brownish hairs; length 30—31 mm.; breadth 13.5—15 mm.

Remarks : This species widely distributed in the different parts of Northern India and Pakistan.

5. *Rhomborrhina mearesi* (Hope)

1843. *Diphillomorpha mearesi* Hope, *Trans. linn. Soc.*, 19 (2) : 107.
 1842. *Anomalocera parryi* Westwood, *Arcana. Ent.*, 1 : 120. (Syn.)
 1910. *Rhomborrhina mearesi* : Arrow, *Fauna British India*, Coleoptera : Lamellicornia, 1 : 88.

Material examined : 1 ex., N. E. F. A., Kameng Div., Nephra. alt. 1678 m., 4 vii.. 1961, (S. Biswas).

Distinctive characters : Elongate, bright green with pinkish reflections above; antennae and tarsi brown; prothorax strongly punctate laterally and finely at the middle; apical part of the elytral margins and pygidium rugose; metasternal process slender, slightly pointed and strongly curved at the apex; metasternum smooth, finely punctate and hairy at the sides, with a median line in the middle; length 20.5 mm. ; breadth 9.5 mm.

Remarks : This is rare species, previously recorded from Sikkim and Darjeeling.

6. *Trigonophorus nepalensis* Hope

1831. *Trigonophorus nepalensis* Hope, *Gray's Zool. Miscell.*, p. 24.
 1842. *Trigonophorus nepalensis* Westwood, *Arcana Ent.*, 1 : 121.
 1841. *Rhomborrhina cantori* Hope, *Trans. Ent. Soc. Lond.*, 3 : 62.
 1910. *Trigonophorus nepalensis* : Arrow, *Fauna British India*, Coleoptera : Lamellicornia, 1 : 103.

Material examined : 1 ex. N. E. F. A., Likhabali round camp, 7.x. 1966. (S. K. Tandon).

Distinctive characters : Elongate and convex, green and moderately shining, lower surface including femora blackish brown, tibiae orange red and tarsi black; head long, clypeus upwardly directed and closely granulated; prothorax with a few fine punctures at the sides; elytra finely punctate striate; metasternum indistinctly punctured; metasternal process narrow, long, curved and directed slightly downwards; length 31.5 mm., breadth 16 mm.

Remarks : It is recorded earlier from the different parts of North East India.

7. *Protaetia neglecta* (Hope)

1831. *Cetonia neglecta* Hope, *Gray's Zool. Miscellany*, p. 24.
 1833. *Cetonia dalman* Gory & Percheron, *Monogr. Cet.*, p. 195.

1842. *Protaetia puncticollis* Burmeister, *Handb. Ent.*, 3 : 470.

1910. *Protaetia neglecta* : Arrow, *Fauna British India*, Coleoptera: Lamellicornia, 1 : 160.

Material examined : 1 ex., N. E. F. A., Kameng Div., Dirong Dzong, alt. 5250 m., 10.iv 1961., (K. C. Jayaramkrishna).

Distinctive characters : Moderately elongate and convex; upper surface bronzy, legs and lower surface sometimes metallic greenish; head entirely deeply punctate, front margin reflexed and minutely emarginate in the middle; pronotum coarsely and closely punctured with a very minute depression on each side; elytra strongly and rugosely punctured except near the scutellum; sternal process very short and broad; metasternum smooth in the middle and rugose at the sides; legs short and each front tibia armed with three sharp teeth; abdomen smooth except the last segment which strongly punctured; length 19 mm.; breadth 11 mm.

Remarks : Though only a single specimen had been collected from Arunachal Pradesh but this species was previously recorded from different parts of northeast and northwest India.

8. *Protaetia cariana* (Gestro)

1891. *Cetonia cariana* Gestro, *Ann. Mus. Genova*, (2) 10 : 850.

1910. *Protaetia cariana* : Arrow, *Fauna British India*, Coleoptera : Lamellicornia, 1 : 161.

Material examined : 3 ex., N. E. F. A., Kameng Div., Dirong Dzong, alt. 5250 m., 11 iv. 1961, (K. C. J.)

Distinctive characters : More or less compact and convex; upper surface bronzy, legs and lower surface coppery reddish or greenish; prothorax decorated with irregularly scattered yellowish spots at the sides; scutellum long, narrow and impunctate, elytra finely punctate; sternal process short, broad and flat; pygidium with two depressions apically; length 21 mm., breadth 12.3 mm.

Remarks : Previously recorded from Sikkim, Darjeeling, Mungphu, Burma.

9. *Oxycetonia albopunctata* (Fabricius)

1798. *Cetonia albopunctata* F., *Ent. Syst., Suppl.*, p. 129.

1789. *Cetonia histrio* Oliver, *Ent.*, 1 : 45.

1842. *Gametis histrio* Burmeister, *Handb. Ent.*, 3 : 364.

1910. *Oxycetonia albopunctata* : Arrow, *Fauna British India*, Coleoptera : Lamellicornia, 1 : 166.

Material examined : 1 ex., N. E. F. A., Kameng Div., Salari, 22.vi. 1961, (K. C. J.).

Distinctive characters : Moderately elongate; pronotum with a lateral line on each side and two black spots near base; elytra black with two longitudinal brick red line, each side decorated with four yellow spots; head deeply punctate; four transverse spots on the pygidium; abdomen sparsely punctate; length 15 mm., breadth 8 mm.

Remarks : This species is widely distributed in India and Burma.

10. *Clinteria arunachala* sp. n.

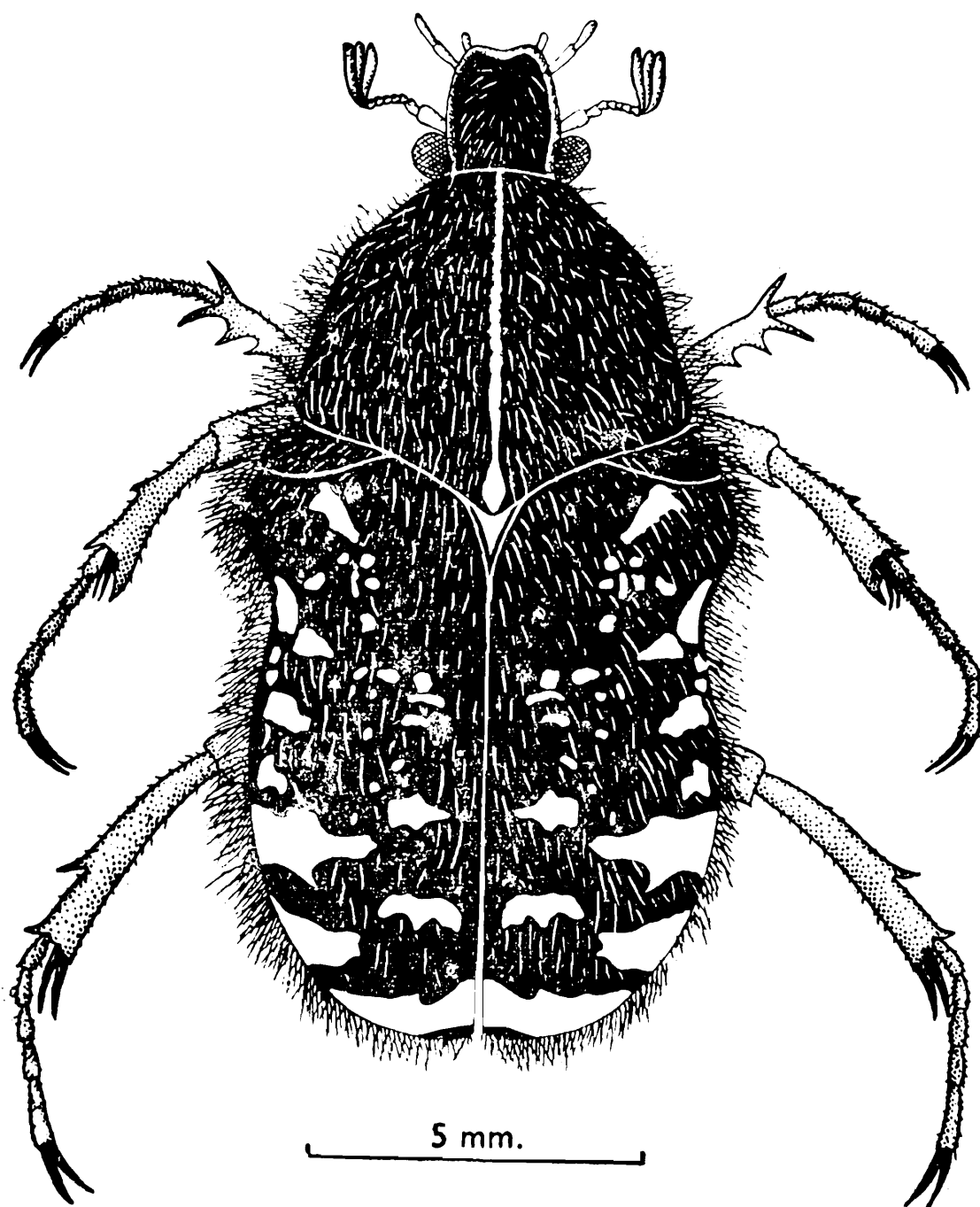
(Text-fig. 1)

Broad, robust and convex, coppery or greenish with whitish hairs except middle of the metasternum and abdomen, upper surface opaque with partial metallic lustre : head feebly rugose in front and densely punctate with long hairs and a fine median ridge posteriorly; abrum semirounded laterally and feebly notched in front, labrum and clypeua reflexed along margins; eyes moderately large with small hairs over and around it; antenna ten segmented, segment I three times longer than globular segment II, segments III-VII smaller than II, VIII-X forming club; pronotum narrow in front, wider posteriorly, moderately lobed behind, slightly curved and rugose at the sides; elytron generally coppery or greenish with 5-6 pale yellow patches and a few spots, sometimes patches and spots confluent and their number variable, humerus elevated in the middle, feebly punctate-striate with fine long hairs, strongly sinuated behind humerus, apical angles slightly rounded; pygidium finely rugose with long hairs, two lateral and one median spots which sometimes confluent; ventral side more hairy and shiny, mentum bilobed with hairs; maxillary palpi four segmented and labial palpi three segmented, apical segment of each palpus fairly long and narrow; prosternum short; mesosternal process extremely short, stout and blunt; metasternum impunctate in the middle and rugose at the sides; front tibia tridentate; each of meso and meta tibia with two pointed spurs at apex; sternites sparsely punctate in the middle, densely punctate and hairy laterally; length 10—14 mm.; breadth 6—8 mm.

In male abdomen broadly channeled at the middle and larger than the female.

Holotype : INDIA : N.E.F.A.; Kameng Div., Dunnbridge, alt. 1524 m., 21. iv 1966, (A. N. T. Joseph).

Paratypes : 16 ex., INDIA : N.E.F.A. : Kameng Div., Dunnbridge, alt. 1524 m., 21 iv 1966, (A. N. T. Joseph); 46 ex., Kameng Div., Dirong Dzong, alt. 5250 m., 7 iv 1961, (K. C. J.).



Text-fig. 1. Dorsal view of *Clinteria arunachala* sp. n.

Remarks : This new species is closely allied to *clinteria hoffmeisteri* White, but can be readily distinguished by its smaller size, absence of pale yellow markings on the lateral side of the pronotum, moderately lobed pronotum and impunctate metasternum in the middle.

SUBFAMILY—DYNASTINAE

11. *Eophileurus planatus* (Wiedemann)

1823. *Geotrupes planatus* Wiedemann, *Zool. Mag.*, 2 (1) 5.

1910. *Eophileurus planatus* : Arrow, *Fauna British India*, Coleoptera : Lamellicornia, 1 : 238.

Material examined : 1 ex., N.E.F.A., Pading Village, alt. 300 m., 11 × 1966, (S. K. Tandon & Party).

Distinctive characters : Body slender, more or less parallel sided, black head, pronotum and elytra coarsely punctured; metasternum finely punctate in middle and strongly punctured and pubescent along sides; antennae small; pygidium convex and closely punctured; length 24.5 mm.; breadth 10.5 mm.

Remarks : The present study is based on a single specimen collected from Arunachal Pradesh, but it was previously recorded from Naga Hills, Manipur, Uttar Pradesh, Andaman and Nicobar Island, Burma and Bangladesh.

SUBFAMILY RUTELINAE

12. *Popillia cyanea* Hope

1831 *Popillia cyanea* Hope, Gray's *Zool. Miscell.*, p. 23.

1917. *Popillia cyanea* : Arrow, *Fauna British India*, Coleoptera : Lamellicornia, p.62.

Material examined : 7 ex., N. E. F. A., Kameng Div., Dirong Dzong, Nykmadong, 3.VIII.1961; 1 ex., Kalaktang, Rupa, att. 2135 m., 26.viii.1961.; 1 ex., Khelong, 29.IX.1961., (S. Biswas).

Distinctive characters : Short, robust and convex, very smooth and bright; indigo-blue or deep steel blue; clypeus and front finely and closely rugose, vertex closely punctured; antennae light brownish; pronotum closely punctate laterally, smooth and shiny in the middle; each elytron with a deep transverse impression near the sutural margin before the middle; meso-sternal process well produced, broad and apex bluntly rounded; pygidium coarsely punctured; length 10—12mm.; breadth 5.5—7 mm.

Remarks : This species is abundantly found in the North India.

13. *Topillia cupricollis* Hope

1831. *Popillia cupricollis* Hope, Gray's Zool. Miscell., p. 23.
 1848. *Popillia caschmirensis* Redtenbacher, *Hiiugel's Kaschmir*, 4 : (2) 528.
 1844. *Popillia nitidicollis* Gory, *Guerin's Iconographie*.
 1855. *Popillia hilaris* Burmeister *Handb. Ent.*, 4 : (2) : 510.
 1917. *Popillia cupricollis* : Arrow, *Fauna British India*, Coleoptera : Lamellicornia, 2 : 73.

Material examined : 12 ex., N. E. F. A., Kameng Div., Nephra, Salarai, alt. 1220 m., 3. VII. and 10. VII. 1961; 2 ex., Dirang Drong, Road side camp, 24. VII. and 2. VIII. 1961; 1 ex., Junga Camp, 21. VII. 1961 : 4 ex., Kameng Div., Nephra, alt. 1678 m., 4. VII. 1961.; 1 ex., Kalantang Siggaron, alt. 2010 M., 27 VIII. 1961. (S. Biswas).

Distinctive characters : Broad, very smooth and shiny, brilliant metallic with orange red; pronotum closely punctured; scutellum with a few fine punctures; pygidium strongly punctured, with long, dense yellow hairs on each side; lower surface and femora with yellow hairs; mesosternal process short; legs very stout and slightly long; length 12—13 mm.; breadth 6—7 mm.

Remarks : This species is widely distributed in North East and North West India.

14. *Popillia pilicollis* Kraatz

1892. *Popillia pilicollis* Kraatz, *Deutsche Ent. Zeits.*, p. 278.
 1917. *Popillia pilicollis* : Arrow, *Fauna British India*, Coleoptera : Lamellicornia, 2, : 91.

Material examined : 3 ex., N. E. F. A., Kameng, Nephra, Salarai, alt. 1220 m., 3. VII and 10. VII 1961., (S. Biswas); 1 ex., Nephra, 25. VI. 1961., (K. C. J).

Distinctive characters : Long, narrow and slightly convex above; head, pronotum very brightly green and elytra coppery red; front densely rugose with greyish hairs; pronotum rugose with setiferous punctures and a very slightly median carina near the base; antennae small, coppery brownish; scutellum with a few punctures; each elytron with six to seven regular dorsal rows of deeply punctured lines; pygidium flat and coarsely punctured with two patches of yellow hairs at the base; mesosternal process very short and blunt; length 9.5—10 mm. ; breadth 4.5—5 mm.

Remarks : It is previously recorded from Gopaldhara, Kur-seong, Mangphu, Assam and Nepal.

15. *Mimela passerinii* Hope

1842. *Mimela passerinii* Hope, *Proc. Linn. Soc.*, 1 : 128.

1855. *Mimela limbata* Burmeister, *Handb. Ent.*, 4 : (2) : 508.

1890. *Mimela pomacea* Bates, *The Entomologist*, 23 : 245.

1917. *Mimela passerinii*: Arrow, *Fauna British India*, Coleoptera: Lamellicornia, 2 : 105.

Material examined : 2 ex., N. E. F. A., Kameng, Bomdila, alt. 2620 m., 14.VII.1961; ex., Kalaktang, Sangloom, 13-14. IX.1961.; (S. Biswas); 2 ex., Bomdila town, 16.VI., (K. C. J.).

Distinctive characters : Elongate oval and moderately broad, slightly convex and shining; deep grass green, sides of pronotum and lateral margin of elytra brownish red, lower surface coppery except tarsi and legs orange red; pronotum short with strongly scattered punctures, sides generally rounded; elytra deeply and densely punctured; mesosternal process moderately long, narrow and acute; pygidium metallic green and densely granulated; front tibia bidentate; length 18—20.5 mm.; breadth 9—10.5 mm.

Remarks : It is previously recorded from North East India and West China.

16. *Mimela horsfieldi* Hope

1836. *Mimela horsfieldi* Hope, *Trans. Ent. Soc. Lond.*, 1 : 114.

1848. *Mimela vittata* Redtenbacher, *Hügel's Kaschmir*, 4 (2) : 525.

1917. *Mimela horsfieldi* : Arrow, *Fauna British India*, Coleoptera : Lamellicornia, 2 : 110.

Material examined : 1 ex., N. E. F. A., Daporijo, Subansiri-bridge, alt. 150 m., 28.X.1966., (S. K. Tandon); 1 ex., Scium, alt 500 m., 25.XI.1974., (J. M. Julka).

Distinctive characters : Elongate oval, bright and smooth, body and legs deep metallic green; clypeus broad, little elevated in the middle and slightly rugose, front densely punctured; pronotum sub-rounded punctured in front rugose at the sides with red markings upon each side of middle; scutellum broad and finely punctate, each elytron with median vitta and with distinct rows of punctures on outer half; pygidium with fine scattered punctures; mesosternum impunctate in the middle with distinct setiferous puncture at the sides, mesosternal process

short and acute; abdomen rugosely punctate at the sides and impunctate at the middle; length 16.5—18 mm., breadth 9.5—10 mm.

Remarks : It is abundantly found from North West to North East India.

17. *Mimela heterochropus* Blanchard

1836. *Mimela splendens* Hope, *Trans. Ent. Soc. Lond.*, 1 : 114.

1851. *Mimela heterochropus* Blanchard, *Cat. Coll. Ent. Mus. Paris*, p. 196.

1855. *Mimela hopei* Burmeister, *Handb. Ent.*, 4 (2) 507.

1917. *Mimela heterochropus* : Arrow, *Fauna British India, Coleoptera : Lamellicornia*, 2 : 117.

Material examined : 3 ex., N. E. F. A., Kameng Div., Ankaling, alt. 2000 M., 25—26.V 1961; 1 ex., Bokhar, alt. 2800 m. 27 V 1961 3 ex., Salari, 22.VI.1961; 3 ex., Nephra, alt. 1220-1678 m., 3-4. VII. 1961. 2 ex., Subansiri Div., Dejco, alt. 183 m., 10.V 1966, (K. C. J.); 5 ex. Subansiri Div., Pamir, alt. 564 m., 17.V.1966 : 1 ex., Tamen, alt. 157 m., 20.V 1966; 1 ex., Northlakhimpur, 26.V 1966, (A. N. T Joseph).

Distinctive characters : Elongate ovate, very smooth and bright metallic green except femora and tarsi, head finely and irregularly punctured, eyes moderately prominent, antennae orange red pronotum with fine scattered punctures; elytra with fine punctate-striate; scutellum broad and impunctate; metasternum smooth and deeply schanneled; tibiae orange red, hind tibiae short and stout with long apical spur, tarsi blackish; length 16—18 mm.; breadth 9—10 mm.

Remarks : This species abundantly distributed in North East India and Burma, so it is not surprising of the occurrence from Arunachal Pradesh.

18. *Mimela bicolor* Hope

1836. *Mimela bicolor* Hope, *Trans. Ent. Soc. Lond.*, 1 : 116.

1917. *Mimela bicolor* : Arrow, *Fauna British India, Coleoptera : Lamellicornia*, 2 : 125.

Material examined : 1 ex., N. E. F. A., Kameng Div., Kalaktang, 30.V 1961, (K. C. J).

Distinctive characters : Small, ovate, smooth and shiny; upper surface and pygidium pinkish yellow; head and pronotum slightly reddish pink, pronotum finely punctate along sides and nearly impun-

ctate in the middle; elytra with longitudinal rows of fine punctures; pygidium smooth, very finely and sparsely punctate; length 12.5 mm.; breadth 8 mm.

Remarks : This species was earlier recorded from Sikkim, Kurseong, Assam, Pedong and Nepal.

19. *Anomala signaticollis* Nonfried

1893. *Anomala signaticollis* Nonfried, *Berl. Ent. Zeitschr.*, p. 334.

1917. *Anomala signaticollis* : Arrow, *Fauna British India* Coleoptera : Lamellicornia, 2 : 198.

Material examined : 1 ex., N. E. F. A., Kameng Div., Pobrangehu, 22.IV.1961., (K. C. J.).

Distinctive characters : Elongate and small, parallel-sided and slightly depressed posteriorly; bright yellow with pale metallic green lustre on head and middle of pronotum, head densely rugose; elytra strongly and coarsely punctate-strigate; scutellum short and smooth; legs long and bright yellow with blackish brown apices of hind tibia and tarsi, fore tibiae broad, flat and bidentate; length 7 mm. ; breadth 4 mm.

Remarks : This species was previously recorded from Assam, Shillong and Manipur.

20. *Anomala perplexa* (Hope)

1839. *Euchlora perplexa* Hope, *Proc. Zool. Soc.*, 2 : 70.

1917. *Anomala perplexa* : Arrow, *Fauna British India*, Coleoptera : Lamellicornia, 2 : 228.

Material examined : 2 ex., N. E. F. A., North Lakhimpur, Koliari Tea State, 3.X.1966., (S. K. Tandon).

Distinctive characters : Elongate-oval, convex and moderately shiny and greenish, lower surface greenish brown, femora and lateral margins of the pronotum and posterior part of the pygidium orange; nearly semicircular and very finely rugose, front deeply punctured, pronotum sub-rounded and with deep round punctures; scutellum finely punctured; each elytron with a row of unequal punctures; metasternum densely punctured at the sides; length 19 mm., breadth 9.5 mm.

Remarks : It has already been recorded from different parts of North East India and Nepal.

SUMMARY

All the specimens studied in the present paper is based on a collection of Cetoniinae, Dynastinae and Rutelinae (Scarabaeidae) made during the faunistic survey of Arunachal Pradesh by the Zoological Survey of India, between 1961—1966. It deals with 20 species, one is described as new viz. *Clinteria arunachala* and 19 species are being described and recorded for the first time from Arunachal Pradesh.

ACKNOWLEDGEMENTS

We are thankful to the Director, Zoological Survey of India, Calcutta, for the facilities provided during this work.

REFERENCES

- ARROW, G. J. 1910. The Fauna of British India, including Ceylon and Burma Coleoptera : Lamellicornia (Cetoniinae and Dynastinae), 1 : 1—322.
- ARROW, G. J. 1917. The Fauna of British India, including Ceylon and Burma. Coleoptera : Lamellicornia (Rutelinae), 2 : 1—387.