

A NEW SPECIES OF SPIDER OF THE GENUS *TMARUS SIMON* (ARANEAE : THOMISIDAE) FROM MADHYA PRADESH, INDIA.

U. A. GAJBE and *PAWAN GAJBE

Zoological Survey of India, Central Regional Station, Jabalpur

The spiders of the genus *Tmarus* are very little known in Indian Fauna. The genus was established by Simon in 1875 with the Type-species *Tmarus piger* (Walckenaer). Tikader (1980) reillustrated and redescribed one species and other new species from India in *Fauna of India* series.

While studying the spider collection collected by the second author from different areas of Jabalpur city we came across a new species of the genus *Tmarus* which is described here as a third species from India.

The type specimen will in due course be deposited in the National Collection, Zoological Survey of India, Calcutta.

***Tmarus jabalpurensis* sp. nov.**

General : Cephalothorax and legs reddish-green, abdomen brownish green. Total length 7.40 mm. Cephalothorax 2.80 mm. long, 2.60 mm. wide; abdomen 4.80 mm. long, 3.70 mm. wide.

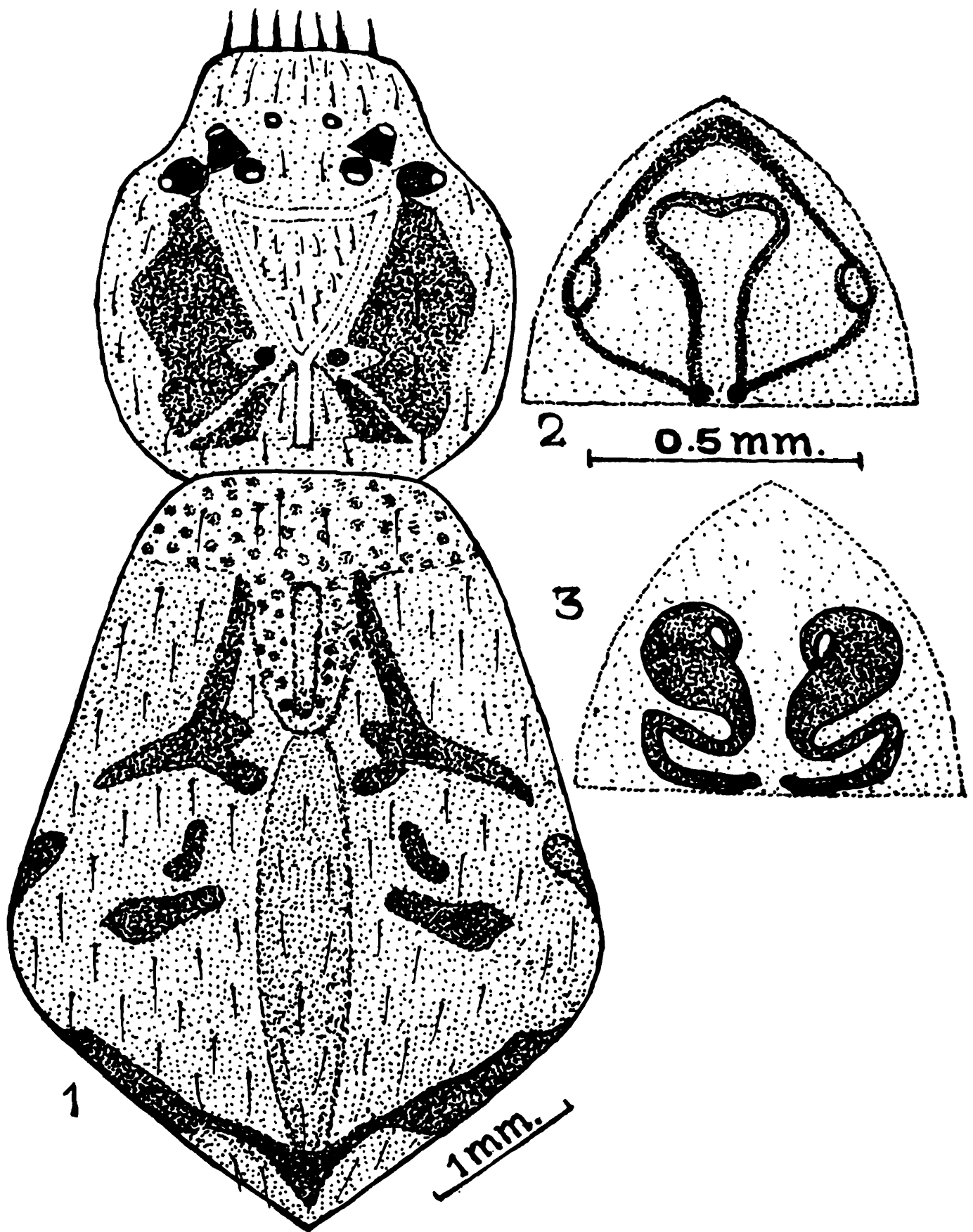
Cephalothorax : Longer than wide, cephalic region high, spined, clypeus moderately high, its margin with seven spines directed forward, sides with broad longitudinal dark brown patches. Eyes round, black, both rows recurved but the anterior row more recurved and the posterior row longer than anterior, the lateral eyes larger than the others and ringed with dark green tubercles; anterior median eyes smaller than posterior medians; the median ocular area narrower in front than behind. Legs I and II longer than III and IV, clothed with hairs and spines; tibiae I and II with three pairs of ventral spines.

Abdomen : Longer than wide, high and pointed behind, broadest behind the middle, clothed with spines; five pairs of dark brown patches present, the fifth pair of dark brown patches meeting at the high posterior end as in fig. 1. Mid-ventral side provided with a broad U-shaped light brown band starting from the base of the epigastric furrow and extending up to the spinnerets, lateral sides provided with dark brown spots. Epigyne as in fig. 2. Internal genitalia as in fig. 3.

Type-specimen : *Holotype* female in spirit, other details as above.

Type-locality : Rampur, Jabalpur District, M.P., Coll. Pawan Gajbe, 16. VIII. 1997.

* *Government Autonomous Science College, Jabalpur.*



Figs. 1-3. *Tmarus jabalpurensis* sp. nov.
 1. Dorsal view of female, legs omitted; 2. Epigyne; 3. Internal genitalia.

This species resembles with *Tmarus kotigharus* Tikader but differs from it as follows : (i) Cephalothorax and legs reddish green but in *T. kotigharus* cephalothorax yellowish brown and legs pale green. (ii) Eyes ringed with dark green tubercles but in *T. kotigharus* eyes ringed with brown tubercles. (iii) Abdomen with five pairs of dark brown patches but in *t. kotigharus* abdomen with two pairs of dark patches. (iv) Epigyne also structurally different.

ACKNOWLEDGEMENTS

The authors are grateful to Dr. J. R. B. Alfred, Director, Zoological Survey of India, Calcutta, for facilities and to Shri K. Vinod, Stenographer, of this station, for typing the manuscript.

REFERENCES

Tikader, B. K. 1980 *Fauna of India, Spiders*, 1 (1) : 1-245.