

**A NEW SPECIES OF SPIDER OF THE GENUS *PHILODROMUS* WALCKENAER
(ARANEAE : PHILODROMIDAE) FROM MADHYA PRADESH.**

U.A. GAJBE AND PAWAN GAJBE*

Zoological Survey of India, Central Regional Station, Jabalpur

The spiders of the family Philodromidae are little known in Indian Fauna. The genus was established by Walckenaer in 1825 with the Type-species *Philodromus aureolus* (Clerck). Tikader (1980) redescribed and reillustrated fifteen species of the genus *Philodromus* from different parts of India.

While studying the spiders of the family *Philodromidae* the authors came across a new species of the genus *Philodromus* which is described here.

The type specimen will in due course be deposited in the National Collection of Zoological Survey of India. Calcutta.

***Philodromus jabalpurensis* sp. nov.**

General : Cephalothorax and legs light yellowish green, abdomen dirty chalk white. Total length 5.00 mm. Carapace 2.00 mm: long, 2.20 mm wide ; abdomen 3.20 mm. long, 2.60 mm. wide.

Cephalothorax : Wider than long, uniform in colour, posterior region slightly overlapped by the abdomen. Clypeus narrow, margin provided with small hairs directed forward. Sternum oval, clothed with fine hairs. Eyes round & black, ringed with white tubercles ; anterior row slightly recurved, almost equal in size and equidistant, posterior row of eyes. recurved, medians smaller than the laterals. Ocular quad longer than wide and wider behind than in front. Legs relatively long, I and II longer than III and IV, clothed with hairs and spines, dorsal side of I femur with one pair of spines directed outward ; tibiae of I and II with three pairs of ventral spines. Metatarsi provided with two pairs of ventral spines, tarsal scopulae well developed and claw tufts prominent.

Abdomen : Longer than wide, depressed, clothed with pubescence, mid-dorsally provided with light brown patch, posteriorly with light brown reticulations and dots as in fig. 1. Ventral side same in colour as dorsal side. Epigyne as in fig. 2. Internal genitalia as in fig. 3.

Type-specimen : *Holotype* female in spirit, other details as above.

Type-locality : Sanjivani Nagar, Jabalpur, Madhya Pradesh, Coll. *Pawan Gajbe*, 6.x.1997.

* Government Autonomous Science College, Jabalpur.

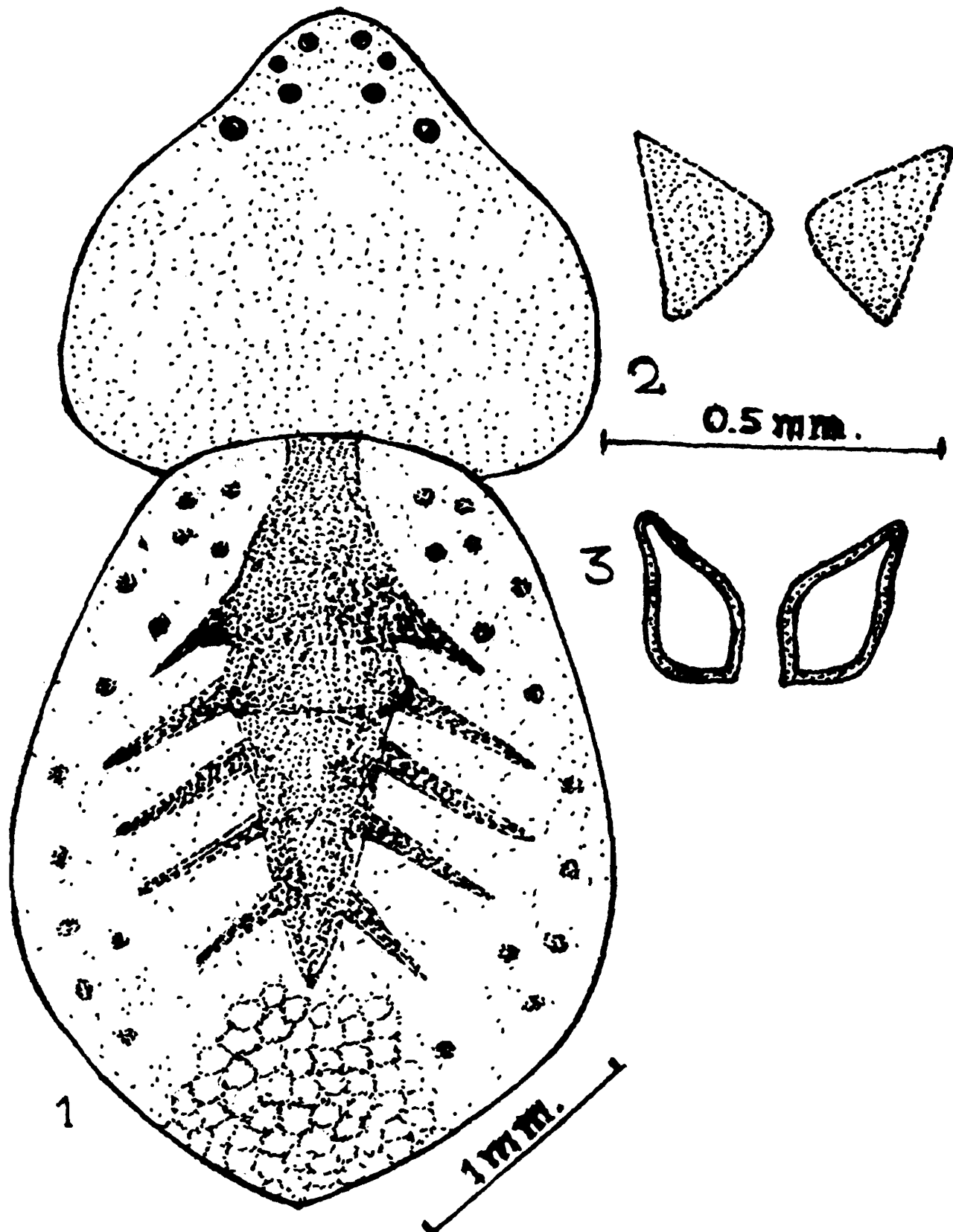


Fig. 1-3. *Philodromus jabalpurensis* sp. nov.
1. Dorsal view of female, legs omitted ; 2. Epigyne ; 3. Internal genitalia.

This species resembles *Philodromus shillongensis* Tikader but differs from it as follows : (i) Cephalothorax uniform in colour but in *P. shillongensis* cephalothorax laterally provided with pigmented patches. (ii) Abdomen mid-dorsally provided with light brown patch, light brown reticulation but in *P. shillongensis* abdomen dorsally provided with irregular brown dots. (iii) Epigyne and internal genitalia also structurally different.

ACKNOWLEDGEMENTS

The authors are thankful to Dr. J.R.B. Alfred, Director, Zoological Survey of India, Calcutta, for facilities and to Shri K. Vinod, Stenographer, of this station for typing the manuscript.

REFERENCE

Tikader, B.K. 1980. *Fauna of India, Spiders*, 1 (1) : 1-245.