

## A NEW SPECIES OF THE GENUS *RUNCINIA* SIMON (ARANEAE : THOMISIDAE) FROM MADHYA PRADESH, INDIA.

U. A. GAJBE and PAWAN GAJBE\*  
Zoological Survey of India, Calcutta - 700 020.

The spiders of the family Thomisidae are little known in Indian Fauna. The genus was established by Simon in 1875 with Type-species *Runcinia lateralis* (Koch). Tikader (1980) reillustrated and redescribed three species and one new species from different parts of India in *Fauna of India* series.

While studying the spider collection collected by the second author from different areas of Jabalpur city, we came across a new species of the genus *Runcinia* which is described here.

The type specimen will in due course be deposited in the National Collection, Zoological Survey of India, Calcutta.

### *Runcinia yogeshi* sp. nov.

*General* : Cephalothorax and legs dark brown, abdomen blackish-brown with whitish patches. Total length 5.20 mm. Carapace 1.90 mm. long, 1.90 mm. wide; abdomen 3.40 mm. long, 2.40 mm. wide.

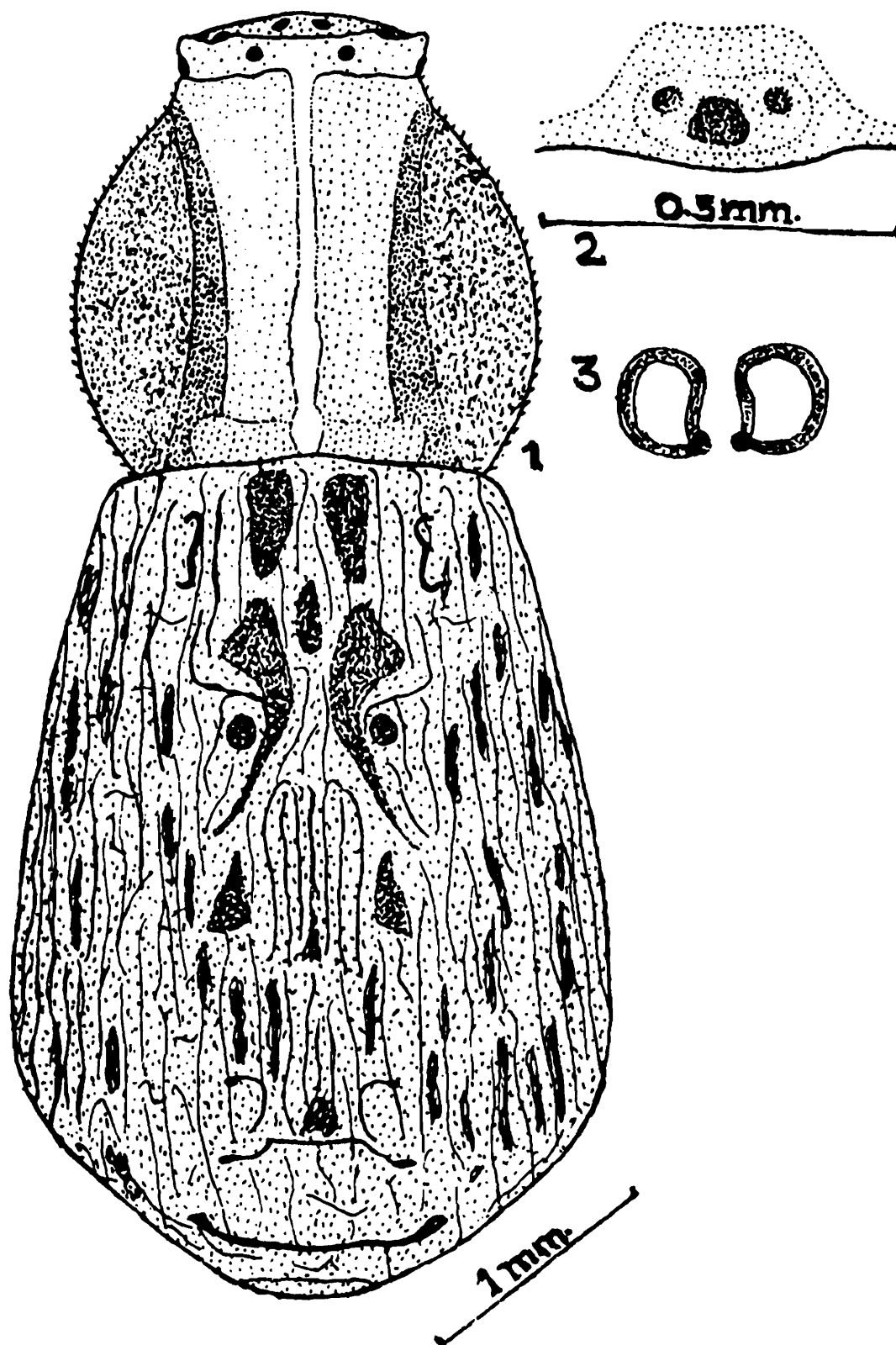
*Cephalothorax* : Nearly as long as wide, narrowing anteriorly, with rounded lateral edges; truncated in front, clothed with fine pubescence. Anterior median eyes slightly larger than posterior medians but smaller than anterior laterals; posterior medians also smaller than posterior laterals. Eyes of both the rows recurved; one double line starting below the posterior medians and ending at the posterior end of cephalothorax; lateral sides of thoracic region darker in colour as in fig. 1. Clypeus dark brown; subrectangular narrowing anteriorly and with stout spines pointing forward. Sternum heart-shaped, pointed behind, dark brown and clothed with fine pubescence. Legs I and II much longer and more spiny than III and IV. Tibiae I and II with five and four pairs of ventral spines respectively.

*Abdomen* : Longer than wide, cylindrical, broadest posteriorly, entire dorsal surface having muscular corrugations and provided with blackish and whitish lines and spots as in fig. 1. Ventral side same in colour and texture, a longitudinal blackish band running from the epigastric furrow to the spinnerets. Epigyne as in fig. 2. Internal genitalia as in fig. 3.

*Type-specimen* : *Holotype* : female in spirit, other details as above.

---

\* Government Autonomous Science College, Jabalpur



Figs. 1-3 *Runcinia yogeshi* sp. nov. - 1. Dorsal view of female, legs omitted.; 2. Epigyne.; 3. Internal genitalia.

*Type-locality* : Gwarighat, Jabalpur, M.P., India. Coll. *Pawan Gajbe*, 2.9.1997.

This species resembles *Runcinia chauhani* Sen and Basu but can be distinguished from it as follows: (i) The entire dorsal and ventral surface of abdomen provided with muscular corrugations but in *R. chauhani* without such muscular corrugations. (ii) Epigyne and internal genitalia also structurally different.

#### ACKNOWLEDGEMENT

The authors are grateful to Dr. J. R. B. Alfred, Director, Zoological Survey of India, Calcutta for providing necessary facilities.

#### REFERENCES

Tikader, B.K. 1980, *Fauna of India, Spiders*, 1(1) : 1-245.